

WEATHER

	Min.	Max.	Precip.
Thursday, Sept. 28	41	62	0.00
Friday, Sept. 29	52	67	0.00
Saturday, Sept. 30	44	71	0.00
Sunday, Oct. 1	42	67	0.00
Monday, Oct. 2	52	65	0.00
Tuesday, Oct. 3	39	66	0.25
Wednesday, Oct. 4	43	64	0.00

ONE HUNDRED-NINTH YEAR—No. 17

14 Pages This Week

Plus 4-Page Supplement

CHELSEA, MICHIGAN, THURSDAY, OCTOBER 5, 1978

15c per copy

SUBSCRIPTION: \$6.00 PER YEAR

The Chelsea Standard

QUOTE

"Labor is prior to and independent of capital. Capital is only the fruit of labor, and could never have existed if labor had not first existed."

—Abraham Lincoln.

Youth Dies Saturday in Bike Accident

A west-bound driver on South St., traveling 20 to 25 mph, struck and killed E. Donovan Purdy, III, a 6-year-old 1st grader at South school as he entered the street while riding his bike, according to Chelsea Police reports.

His grandparents, Mr. and Mrs. Edward Purdy, Sr., of Grosse Pointe, watched in horror as Donovan emerged from the driveway in front of his South St. home and into the path of a car driven by Douglas John Tadjewski, 40, of Howell.

"Based on the amount of tire marks left on the road, we estimated that the driver of the car was traveling at about 20 to 25 mph before he applied his brakes and swerved to avoid hitting the child," Sgt. McDougall of the Chelsea Police Department stated. "There were about 26 feet of skid

marks and the child was thrown about 49 feet after impact," he said.

According to the report, the driveway was hidden by parked cars on both sides. Statements from the two passengers in the Tadjewski car, and reports on the length of the skid marks have ruled out any criminal negligence on the part of the driver and there will not be charges brought against him, McDougall said.

Chelsea police responded within minutes of the accident, followed shortly by an ambulance which took the boy to Chelsea Community Hospital. The report stated that he was dead on arrival of a broken neck and massive internal injuries.

Donovan would have been seven on Jan. 28, 1979. His parents are Edward and Cathy Purdy of Chelsea and he lived at 304 South St.



KIWANIS CLUB OFFICERS for the new year beginning Oct. 1 were installed Monday evening by Division 10 Lt. Gov. Joe Medrano of Dexter. Present for the photo; above, are, front row, left to right: Medrano; Weldon Harbaugh, president; James Liebeck, past lieutenant governor who assisted with the ceremonies; back row,

from left, Robert Aello and Charles Cox, board members; Floyd Fowler, secretary; Herman Koehn, 2nd vice-president; George Parker, 1st vice-president; Elmer Kiel, immediate past president; and Homer Kuhl, board member. Harold Rickerman, Jr., was installed for another year as treasurer.

Bulldog Grid Team Still Undefeated

Rack Up S. Lyon To Earn No. 10 Ranking in State

With bated breath, one of the largest crowds ever to pack the Chelsea High school football bleachers gripped the edge of their seats for nearly the game's length before letting loose with a wild cry of "victory" as Chelsea outwitted the South Lyon Lions, 12-7.

Friday night's game was the varsity Bulldogs fourth straight win of the season and their prowess on the field has earned them the ranking of No. 10 in the state by The Detroit Free Press and confidence for the Southeastern Conference title.

Both teams kept the crowd in suspense throughout the first half with the Lions' wishbone offense holding Chelsea's defense in their own territory.

At the same time, the line of Lou Jahnke, Jim Brown, Scott Price, Tom Bareis, John LaBarbara, linebackers Art Presley, Ben Kincer, Alan Augustine, Scott Powers, and defensive backs Jesse Coburn, Doug Clark and John Dunn squashed all attempts by the Lions to score.

Brad Knickerbocker did an excellent job of punting the ball out of South Lyon's reach. "South Lyon split open the third period, scoring as Jeff Bowersox sped 66 yards through the middle of the field to the end zone. Scott Dunn kicked the extra point and the Lions led, 7-0.

Chelsea struggled to get good field position and late in the third quarter John Dunn replaced Jesse Coburn as quarterback while Co-

burn took a halfback position and the Bulldogs jumped to life.

By the fourth period Chelsea dominated the field behind the running of Art Presley, Alan Augustine and passing of John Dunn. A drive of 91 yards afforded Augustine a touchdown from four yards out as Tim Bareis and Mike Killelea executed strong blocking. With the score 7-6, Chelsea opted for a two-point extra-point play which was almost completed but just tipped away. "We could have gone for the one-point placement kick but when you have an opportunity to win the game, you take it," Coach Phil Bareis said of his decision not to go into overtime.

Chelsea still had five minutes left on the board when an onside kick by John Dunn rolled 10 yards and was recovered by Bulldog LaBarbara. On the second play, Dunn passed to Augustine who made a spectacular catch while girded by Lion defenders and ran 49 yards for the winning points.

With victory so close, fear struck the fans as South Lyon reached the Chelsea 14-yard line. On a fourth and eight the Lions' halfback ran up the middle before LaBarbara tripped him up one yard short of a first down. The Bulldogs then ran out the clock for the triumph.

With a 3-0 SEC record, Chelsea travels to the "pass-minded" Milan Big Reds for their homecoming. Milan is 2-1 in SEC and has a veteran team of 19 seniors.

Girl Swimmers Qualify Two For State Meet

Establishing six new school records, and qualifying two swimmers for this year's state meet, the varsity girl swimmers won two out of three tough meets last week by defeating Dundee, 100-72, and Jackson, 93-79.

The girls remain undefeated with nine consecutive wins this season. Highlighting the first meet, Sara Borders broke the 200-yard freestyle record while competing against Dundee with a 2:13.14 which qualified her for the state meet in Grand Rapids.

Shannon Springer, in the 200-yard I.M., broke the school record with a 2:39.4, while Teresa Degener recorded a 1:19.5 in the 100-yard breaststroke to break the record

but missed the state qualifications by 9/10th's of a second.

Dundee meet results are: 200-yard medley relay, Lisa Radke, Michele Clark, Teresa Degener, and Donna Alexander, 3rd, 2:20.1; 200-yard freestyle, Sara Borders, 1st, 2:13.14; Mary Bacon, 4th, 2:33.44; and Annette Kuhl, 6th, 2:14.80; 200-yd. I. M., Shannon Springer, 1st, 2:39.47; Shannon Culver, 4th, 3:03.20; and Janine Hoffman, 5th, 3:05.21; 50-yard freestyle, Shelly Springer, 1st; Anita Powell, 2nd; Donna Alexander, 5th.

Diving, Michelle Alexander, 1st, 157.5 pts.; Michele Clark, 2nd, 129.8 pts.; Molly Bacon, 3rd, 107.15 pts.; Pam Spayd, 7th, 82.65 pts. (Continued on page four)

Soccer Team Gets Win, Tie In Past Week

Chelsea Blues soccer team won one and tied one last week as they challenged the Canton Eagles on Wednesday, Sept. 27 and the Tigers of Garden City on Saturday, Sept. 30.

What appeared to be a close but sure win over the Eagles, became a tie in the final 30 seconds of Wednesday's game when the Eagles scored their third point.

Eric Schaffner of Chelsea scored in both the second and third quarter with a direct kick on a penalty called against the opponents. In the third quarter, Chelsea's Doug Sarbach dribbled through the defense line to bring the home team a 3-2 lead. The game ended, 3-3.

On Saturday, the Blues visited Garden City and proceeded to romp over the Tigers, 3-1. Eric Schaffner repeated his two-point performance of Wednesday, while Brian Ackley scored the third point.

The Blues' next home game will be on Saturday, Oct. 21 at Beach Middle school following three consecutive away games.

Homecoming Week Activities Start Monday

Boo! If that didn't scare you then you're not in the spirit of the season.

Students at Chelsea High school are and they're ready to tackle the upcoming Friday the 13th homecoming game with a secret potion No. 1 to ward off any superstitious notions about bad luck.

"If there is going to be bad luck, it's going to be bad luck for the 'Dreadnaughts,'" a spooksperson for the homecoming activities predicted from her crystal ball.

"Superstition" is the theme for this year's Bulldog homecoming and committee members in charge of the activities have planned more than a dozen trick or treat activities for the week, according to senior chairwoman Veronica Satterthwaite.

On Monday, Oct. 9, the "force of '79" will call for homage from the lower classmen and teachers. Juniors are to wear a white diaper and carry a baby toy while teachers must dress as they did

when 13 to 15 years old. Sophomores will be the witches and warlocks of yesterday and the freshmen are to dress as ghosts. The seniors will be "the people in blue after you" garbed in solid blue and wearing an arm band.

Also on Monday, the disguised students will vote for homecoming king, choosing from freshmen Bob Trevino and Dave Lang, sophomores Ross Stofflet and Craig Thams, juniors Dan McGill and Brian Hatton, and seniors Gary Dilis and Charlie Bridges. That night, following the parent open house at CHS, the king will be crowned and the girls' powder puff football game commences at 9 p.m.

Tuesday is "Mafia Day" when the drab school halls will take on affectations of the gangster '20's with judging conducted during second hour. That night at 7, the four classes will compete in a water balloon toss on the football field—four contestants from each class—to be followed by a "battle over the bloody foam" an ordinary tug-of-war with a new twist as the losers will be dragged through a mound of shaving cream instead of mud.

"Let the spirits of blue and gold move you," herald Wednesday's theme. Morning classes are shortened, teachers are appreciated, and a gong show presented. Wednesday night the powder puff finals start at 8.

On Thursday anything could happen as students dress up as their favorite comic character and the seniors go on sale as slaves during lunch hour. Chelsea streets may not be safe that evening with snake dancing beginning at 6:30.

led by the homecoming king from high school, through downtown, and then back to the field where an obstacle course will pit the classes together again in a contest of the nimble limbs.

If anyone should survive these maddening affairs, they should be more than fit to survive the curse of Friday the 13th and all of its evil, lurking through the halls and locker room.

Once again students will disguise themselves beneath their selected Halloween costumes and during third hour the entire student body—new this year—will vote on the homecoming queen from freshman candidates Chris Guinan and Dina Olson, sophomores Anita Powell and Julie Sundling, juniors Patti Hume and Sharon Kroph, and seniors Caroline Enderle and Kris Saarinen.

A pep assembly that afternoon, featuring skits by each class will add further scares to the day but by 6:30 p.m. things should be back to "normal" as the homecoming parade leaves Park St. at 6:30 to trail its way down Main St. to Summit St. and on up to the football field.

At 7:30 p.m. Friday, the undefeated Bulldogs meet the victorious Dexter Dreadnaughts. A half-time extravaganza will dazzle the field, culminating in the crowning of the Homecoming Queen.

In keeping with the "superstition" theme, the "Magic Fingers" will perform for the Homecoming Dance at the high school with the doors opening at 9 p.m.



NEW BANK: This soon to be constructed \$230,000 building will offer customers a complete line of banking services provided by the Ann Arbor Trust Co. Before it is built, the bank will move

into a trailer at 1478 Chelsea-Manchester Rd. just west of M-52, on Nov. 6. The branch office will be the first for the Ann Arbor based bank.

Branch Bank To Open Nov. 6

The Ann Arbor Trust Company's first branch office will open in Vivian township, just south of Chelsea, on Nov. 6, it was announced today by George H. Cress, president.

"We are delighted to extend our banking and trust services to our neighboring community of Chelsea," Cress noted in his announcement. "It is appropriate, we think, to open our first branch bank office in Chelsea which is centrally located to serve the entire western part of Washtenaw county," he said.

The Trust Company, founded in 1854, operated exclusively under a charter as a state chartered institution until Aug. 26, when it became a national bank.

its bank division offering a full range of commercial banking services.

The new branch in Chelsea will be the first satellite office for Ann Arbor Trust whose main offices are located in downtown Ann Arbor. Recent reports place the firm's assets at approximately \$74,000,000, and with trust assets under supervision in excess of \$300,000,000.

As was announced earlier, the Trust Company will also be establishing a new branch office in Brighton. This office, however, will not be opened until the permanent building is completed, which will be sometime in the spring of 1979.

Heading the Chelsea branch of the bank will be the former executive

director of the Ann Arbor Chamber of Commerce, William J. Bott, 54, a resident and community leader of Ann Arbor since 1956.

Cress said that Bott has been elected an assistant vice-president and branch manager and will report directly to William M. Broucek, executive vice-president and head of Ann Arbor Trust Company's banking division.

A temporary trailer will be installed on the site at 1478 Chelsea-Manchester Rd., just west of M-52. Construction of the permanent building, designed by Darnels-Zermack Associates, will begin shortly. Estimated cost of the banking facility is approximately \$250,000, Cress reported.

The new manager headed the

Ann Arbor Chamber of Commerce for 16 years. Prior to that he was the director of the Chamber of Commerce in the communities of Niles and Three Rivers. More recently, he was associated with the Caldwell & Reinhardt Co.

Involved in civic activities, Bott is a member of St. Joseph Mercy Hospital Special Events Committee. He was instrumental in the establishment of Washtenaw Community College and served as trustee and treasurer of the board.

He has also served as secretary and commissioner on the Ann Arbor City Planning Commission. Bott earned a Bachelor of Science degree from Indiana University and is also a graduate of the (Continued on page six)

Junior Class Sponsors Rock Dance

Junior class of Chelsea High school held their first fund-raising affair for the 1979 junior prom and while they only broke even they have enthusiastically declared the dance a success.

Playing for the "Grease in the '70s" dance was the Lansing based "Blue Money" rock band, who kicked out the music for the costumed dancers. Attired in the (Continued on page six)

Kenneth Bauer Hits Lucky One in Michigan Lottery

Kenneth Bauer, 39, of Chelsea, bought a 50 cent ticket at Polly's Market in the Michigan Lottery's weekly "Michigan" and won himself \$18,000.

Bauer is an employee of the A&P supermarket in Saline and traveled to the Lansing Ramada Inn for the contest on Thursday, Sept. 23. Although he has played the lottery for some time, this is his first big win. Future plans call for a hunting trip to Alaska where he has always wanted to go to hunt caribou.



NATIONAL BEAUTY SALON WEEK: Chelsea Village President Don D. Wood fixes his signature to the declaration of National Beauty Salon Week, Oct. 8-13, while Fran Coy, far left, past president of Washtenaw County Hairdressers Association, affiliate No. 26 and Chelsea hairdresser Lisa Foytik of Ricardo's look on. The special week will be observed throughout the country and proceeds from

many National Beauty Salon Week activities will be presented to local charities for the benefits of the entire community. "I commend the week and its theme, 'Today's hairdresser can do more for you than ever,' to the attention of our citizens in order to recognize cosmetologists for their dedicated services to the grooming of women for greater beauty," the proclamation which Wood signed read.

Established 1871 **The Chelsea Standard** Telephone 475-1371Excellence Award By Michigan Press Association
1951-1952-1960-1961-1965-1966
Walter P. Leonard, Editor and Publisher

Published every Thursday morning at 300 North Main Street, Chelsea, Mich. 48118, and second class postage paid at Chelsea Mich., under the Act of March 3, 1879.

Subscription Rates (Payable In Advance)

In Michigan:	Outside Michigan:
One Year\$6.00	One Year\$8.50
Six Months\$3.50	Six Months\$4.50
Single Copies\$.20	Single Copies\$.25

MEMBER
NATIONAL NEWSPAPER
Association - Founded 1885National Advertising Representative:
MICHIGAN NEWSPAPERS, INC.
257 Michigan Ave.
East Lansing, Mich. 48823**Uncle Lew from Lima Says:**

DEAR MISTER EDITOR:

The fellers were setting around the stove in the country store Saturday night discussing things to do between dark and bedtime this winter to keep from watching television. Clem Webster said he ain't paid much mind to TV since the cowboy shows rode off in the sunset, and shows were so bad last winter he even got to talking with his old lady. From what he's read on this year's crop, Clem said he might start taking them ceramics classes where the wimmen at the church make all their Christmas gifts.

Zeke Grubb allowed he is not near as worried about what passes for prime time on TV as he is about what happened to the Department of Agriculture. Back in But's day, Zeke said, you could look for somep'n in the papers ever day about USDA doings. If there weren't any wars on the farm front you could count on the secretary to start one. Either the Carter people have got the department running so slick it don't make any noises, or it ain't running at all, was Zeke's words.

Actual, said Clem Webster, the slowdown of agriculture news has more to do with farmers than with bureaucrats. Clem said most farmers right now are catching up on their hunting, and they ain't got time to complain to Washington. The news from USDA is like all other Government agencies, Clem went on, it comes more from reaction than from action. As soon as spring breaks and folks start having to replace tractors and buy seed and fertilizer they'll start in on parity, price supports and the whole ball of wax, Clem declared.

Congressmen in office and them hoping to get in will steer clear of farm problems before November voting, Clem said, because they never know where they stand till farmers tell em.

Zeke said what he wanted to know from USDA is who is in charge of hiring consultants. He said he was full qualified to advise on any issue, and he could make himself available for the usual fee of \$500 a day. Zeke had saw where Federal Government agencies is paying out that kind of money to everybody from retired admirals to reformed bootleggers. If you got a skill you ain't using, Zeke said, Uncle Sam will pay you to tell him how you got away with it all those years. The way he sees it, we got to have a layer of know-how between the appointed hacks that don't know and the regular help that depend on somebody to tell em what to do.

General speaking, declared Ed Doolittle, outside experts might be a bargain, even at \$500 a day. Ed proposed right off that we hire a bunch of private accountants to check behind the accountants that are supposed to be checking behind the General Services Administration. And while we're at it, Ed said put on a dozen or so interpreters to see what language was spoke at Camp David last month. While they were there what little news got out was sweetness and light, Ed said, and ever since the Egypt and Israel leaders went home they have spent all their time translating their agreements back into their same old disagreements.

Yours truly,
Uncle Lew.**MICHIGAN MIRROR**

By Warren M. Hoyt, Secretary, Michigan Press Association

Highway Logging Program

Modern day Paul Bunyons will soon be seen along Michigan highways.

A unique, cost-cutting forestry program, the commercial harvesting of roadside timber, will soon begin under the strict control of the Department of State Highways and Transportation.

The program is designed to better manage the thousands of acres of wooded right-of-way along state highways in northern Michigan.

Now in the experimental state, the new program will permit logging companies to remove dead and dying trees and selected live

trees where thinning would improve the condition of roadside timber stands.

Both the state and the forestry industry are expected to profit from the program through the sale of timber that might otherwise go to waste. Also the state is expected to benefit by the elimination of potential traffic hazards.

The pilot study for the program was undertaken by the Ford Forestry Center of Michigan Technological University.

It included an inventory of all 1,647 miles of state highways in the Upper Peninsula. Of the total

40,500 acres of right-of-way, including both the roadways and shoulders, 13,500 acres contain stands of timber.

Other information from the inventory ranged from estimated volumes of wood products to the types and conditions of forest stands to the scenic or aesthetic value of each section of right-of-way.

Logging at four demonstration sites will allow for critical evaluation both by state highway officials and the general public.

Mainly the operations will provide for testing and evaluation of various harvesting methods and equipment, including the old-fashioned but often cost-effective use of horses rather than machinery to move logs to the roadside for transport to sawmills.

The demonstration projects also will provide information on costs, cutting schedules, the impact of roadside aesthetics and other aspects of roadside logging useful for future management.

The Federal Highway Administration was impressed enough by the potential benefits of the program to pay for part of the pilot study's \$38,000 costs.

Insurance Information

There is probably nothing more confusing to consumers than insurance coverage and facts.

The Insurance Bureau within the state Department of Commerce has published a series of consumer facts sheets designed to inform Michigan citizens about important aspects of automobile, health and life insurance.

The series, entitled "Insurance Consumer Alerts," covers insurance matters which the bureau feels cause the most confusion and create greatest potential pitfalls for consumers.

Included in the series are a brief explanation of no-fault auto insurance, tips on how to reduce auto insurance premiums, the rights and responsibilities of customers filing claims, advice about changing or dropping life insurance coverage and a chart outlining different types of automobile collision insurance.

The bureau will produce additional consumer alerts on topics of concern as new issues surface.

Copies of the alerts are available without charge from the Insurance Bureau, Department of Commerce, Office of Consumer Protection, P.O. Box 30220, Lansing 48909.

Please Notify Us of Any
Change in Address.**4 Years Ago...**

Thursday, Oct. 10, 1974—

In three days, this Sunday, Oct. 13, ground-breaking ceremonies will be conducted at the Chelsea United Methodist Home initiating an \$8 million enlargement and improvement program designed "to provide a totally supportive retirement community for an elderly population of 300 persons," a spokesperson said.

Nine automobiles parked at Village Motor Sales were damaged last week, apparently by some unknown persons who kicked in fenders and grills of the various cars.

Two pick-up trucks full of mostly clothing were collected this week-end in Chelsea High school students' drive to provide for Honduran hurricane victims, Mrs. Rosemary Wollia, teacher at the high school, reports.

A hefty portion of "elbow grease" is needed for the completion of restoration of the Chelsea Train Depot before Amtrak trains begin their new scheduled stops there at the end of this month. The restoration is being conducted by local residents through donations raised by the Chelsea Kiwanis Club.

14 Years Ago...

Thursday, Oct. 1, 1964—

The large country home at 10842 Joslin Lake Rd., which for the past 22 years has been known as Camp Crile headquarters, was burned to the ground Sunday night.

Concrete was poured yesterday for the floor of a new building under construction just east of Chelsea Grinding Co. at 13600 I-94. Nearly 50 percent will be used by the grinding firm and the remainder will be leased to a new tumbling shop for the manufacture of abrasives.

Two cars and a Chelsea school bus were involved in an accident on M-52 early Monday morning. No injuries were sustained, it was reported. Cause of the accident was listed as poor visibility because of heavy smoke which had drifted across the highway from smudge pots used to combat the effects of frost on a local farm.

24 Years Ago...

Thursday, Oct. 14, 1954—

John Griffin, Chelsea High school principal and chairman of a Kiwanis-sponsored economy race for automobile drivers of Chelsea High

school, announced that the race will take place Sunday, Oct. 24.

Men of the community between the ages of 21 and 35 years are being invited to attend a meeting for the purpose of discussing the possibility of forming a local chapter of the Junior Chamber of Commerce.

Dick Young of Waterloo, radar man first class on the Destroyer Beale, was among the Navy men assigned to assist in the rescue mission of survivors of the crew of the Mormackite, the ore freighter that sank Thursday off the coast of Norfolk, Va.

A fall-campaign of the newly-organized Chelsea Community Chest is planned following receipt of approval of its articles of association tomorrow, Friday Oct. 15.

34 Years Ago...

Thursday, Oct. 12, 1944—

One of the worst traffic accidents in the history of Chelsea occurred last Friday afternoon when a heavily loaded semi-trailer crashed into a car at the corner of Main and South St. Despite the almost completely demolished car, driven by Dennis Guinan, both passengers, including 8-year-old Arthur Rowan, were not injured.

Glenn H. Barbour was surprised Saturday evening when the Lima Center Birthday club gathered at his home to celebrate his birthday.

Sgt. Robert Horste, who recently returned from England, is spending a three-week furlough at the home of his mother, Mrs. John Fischer, 130 East St., after which he will report at Miami Beach, Fla. for redistribution.

Open House Set at WCC

Washtenaw Community College welcomes the public Sunday, Oct. 8 to an open house on the college grounds from 2 to 5 p.m.

During that time a range of activities are planned. These include free vehicle inspections by automotive students; free family portraits by photography students; free blood pressure readings by nursing students; jazz concerts by the college's award winning bands and free computer games devised by students in computer technology.

Free child care on the campus will be available and refreshments will be served.

Dial-A-Garden Topics Listed

Dial-A-Garden, the system of pre-recorded daily gardening tips, is sponsored by the Washtenaw County Co-operative Extension Service. The system is in operation 24 hours per day, seven days per week. Interested persons are invited to call 971-1122 at their convenience and receive timely, up-to-date gardening information.

Next week's Dial-A-Garden topics are:

Friday, Oct. 6—"Home Apple Storage."

Tuesday, Oct. 10—"Rodent-Proof Young Trees."

Wednesday, Oct. 11—"Transplanting Perennials and Perennials."

Thursday, Oct. 12—"Winter Care of Potted Azaleas."

\$161 MILLION PAID BY EMERGENCY FEED PROGRAM

U.S. livestock producers were paid \$6,464,664 during July to buy feed under the Emergency Feed Program, according to the Agricultural Stabilization and Conservation Service. This brings assistance during the first 10 months of the program to \$161,030,840.

ASCS reported that 125,168 applicants were received by the end of July, and 81 percent of those received won approval. Producers used the funds to purchase up to 13 billion pounds of feed.

GOT THE SNIFFLES?Vitamin B Complex with Vitamin C
May Help You!**RIVENDELL NATURAL FOODS**Monday through Saturday, 9 a.m. to 5 p.m.
3212 Alpine, Dexter Ph. 426-2549
(Across from the Farmers' Market)**NOW ON TUESDAY NIGHTS****CHICKEN BUFFET**

with our Famous Deep-Fried Chicken
and SPECIAL BARBECUED CHICKEN
also mashed potatoes and gravy, dressing, and soled bar.
Serving from 4:30-9:00

at the **CAPTAINS TABLE**

8093 MAIN ST., DEXTER

PH. 426-3811

Standard Want Ads Will Sell Your Unwanted Items

Donald A. Roth,
Community Relations Manager,
Ann Arbor, reminds you:**"If anyone
in your family is handicapped,
you should look into
these services..."**

We have a wide range of services that can help the physically impaired to communicate by telephone. For people with difficulties in hearing or speech, there are amplifying devices. For example: A telephone handset that allows adjustment of volume for hearing and another that permits amplification of speech.

As an aid for those with speech loss, Michigan Bell has an artificial larynx. And people with motion impairments should know about services such as easy-to-use card dialers, speakerphones, telephone headsets, and School-to-Home telephone service for students unable to attend class.

If you think any of these services might help you or someone in your family to communicate more easily, just call your local Michigan Bell Business Office.



Michigan Bell

Michigan Bell...
people who enjoy serving people.**Trap Shoot**
Sunday, Oct. 8

10:00 a.m.

**CHELSEA ROD
& GUN CLUB**
Lingane Road, Chelsea
OPEN TO PUBLIC**Howell**
Livestock AuctionStarts 1 p.m. Every Monday
Mason 676-5400The Wise Owl Says Ship to Howell
Phone 546-2470 Bim Franklin
Market Report for Oct. 2**CATTLE—**

Bulk Gd.-Choice Steers, \$53 to \$55
Fow High Choice Steers, \$55 to \$57.50
Gd.-Choice Heifers, \$48 to \$52.50
Fed Holstein Steers, \$45 to \$50
Ut.-Std., \$44 and down.

COWS—

Heifer Cows, \$44 to \$45
Ut.-Commercial, \$40 to \$44
Canner-Cutter, \$30 to \$40
Fat Beef Cows, \$35 to \$40

BULLS—

Heavy Bologna, \$45 to \$50
Light and Common, \$44 and down.

FEEDERS—

400-600 lb. Good-Choice Steers, \$58 to \$70
600-800 lb. Good-Choice Steers, \$50 to \$55
800-600 lb. Good-Choice Heifers, \$45 to \$50
300-500 lb. Holstein Steers, \$50 to \$56
500-800 lb. Holstein Steers, \$45 to \$50

CALVES—

Prime, \$80 to \$90
Good-Choice, \$70 to \$80
Heavy Deacons, \$65 to \$75
Cull & Med., \$30 to \$50
Calves going back to farms sold up to \$80

SHEEP—

Wooled Slaughter Lambs, Springs
Choice-Prime, \$58 to \$60
Good-Utility, \$54 to \$58
Slaughter Ewes, \$18 to \$25
Feeder Lambs, All Weights, \$63 to \$66

HOGS—

210 to 240 lbs., No. 1, \$32 to \$53
200-250 lbs., No. 2, \$30 to \$50
Heavy Hogs, 250 lbs. up, \$44 to \$49
Light Hogs, 200 lbs. down, \$30 to \$48

SWINE—

Light, \$42 to \$44
Heavy, \$43 to \$45
500 lbs. and up, \$44 to \$45.70

GOATS and Stags—

All Weights, \$37 to \$42
Feeder Pigs:
Fryer, \$20 to \$30
Est. 40 lb. pigs, \$32 to \$43

HAY—

Cutting, per bale, 200 to \$1.00
2nd Cutting, per bale, \$1.00 to \$1.85

STRAW—

Per Bale, 75c to \$1.25

COWS—

Spring Cows, \$80 to \$100

Food Stamp Outreach Office Offers Help

Federal and government agencies have recognized that light, heat and utility bills have become a major problem for families, especially those on fixed or low-incomes.

If you are feeling the pinch of high heating costs this winter, remember that the Food Stamp Program considers your utility bills when determining eligibility.

To find out if you may be eligible, call the Food Stamp Outreach office Mon.-Fri., 8 to 5 (994-1863).

This Amazing OFFER! TO EACH NEW Customer

FREE ONE CASE 24 CANS

THIS IS A DIRECT OFFER FROM A FOOD BROKERAGE

WE RESERVE THE RIGHT TO LIMIT QUANTITIES

Learn to Shop & Save the All American Way**FARMER****PROCESSOR****SAVE DOLLARS NOT PENNIES**

THOUSANDS OF FAMILIES BUY THE SAME AS RESTAURANTS AND INSTITUTIONS.

Now! Find out how you can Buy Direct and Save...Buy at real Bushel and Case Prices from All American Foods!

No appliance purchase or membership required

YES! I WANT TO TAKE ADVANTAGE OF YOUR FREE OFFER.

Furnish us with Complete Information. We are interested in Saving Dollars on Our Food Bill.

NAME _____

ADDRESS _____

CITY _____ STATE _____

THERE ARE _____ Persons living in our home.

PHONE _____

•NAME BRAND
•CANNED GOODS•CHOICE MEATS
•BEEF AND PORK**ALL AMERICAN**

P. O. Box 278

Chelsea

663-3633

FOOD SERVICE**W C C OPEN HOUSE**
SUNDAY, OCT. 8—2-5 p.m.

- ★ CAREER/OCCUPATIONAL EXHIBITS AND DEMONSTRATIONS
- ★ SCIENTIFIC DEMONSTRATIONS
- ★ MEDICAL DEMONSTRATIONS
- ★ ACTIVITIES FOR KIDS
- ★ FREE VEHICLE INSPECTION AT AUTO SERVICE BUILDING
- ★ JAZZ CONCERT
- ★ FREE RIDE ON LONDON DOUBLEDECKER BUS TO AUTO SERVICE BUILDING

WASHTENAW COMMUNITY COLLEGE

4800 E. HURON RIVER DR., ANN ARBOR

Auto Service Building: 5115 Carpenter Rd., Ypsilanti

Young Homemakers Discuss Programs For Coming Year

The first fall meeting of Young Homemakers was held at the home of Jean Satterthwaite, Thursday, Sept. 28. President Arlene Graft called the meeting to order with roll call.

The program for the coming year was discussed in detail. Three craft days, several excursions, and a dance highlight the activities. Resignations were regrettably accepted from Barbara Seabury and Martha Luick. Two new members will be welcomed to the group next month.

Frances Murphy entertained the club with an original belly dance. After her performance other members questioned Frances about the art. Everyone then enjoyed the exchange of gifts revealing their secret pals.

Following adjournment, refreshments were served by Penny Laier and the hostess. On Oct. 26 the group will gather at the Crossroads fabric shop in Saline for a quilting demonstration.

Workshop Slated On Judging Cost, Quality of Food

How do canned foods compare to frozen foods-store brand to national brand? To see for yourself come to a workshop entitled, "Judging the Cost and Quality of Food," sponsored by the Co-operative Extension Service, at 9:30 a.m. Oct. 11, at the Washtenaw County Service Center, 4133 Washtenaw Ave., Ann Arbor.

According to Marion Prine and Jan Seitz, extension home economists who will conduct the program, there are several considerations to be made when deciding which choice is best for a particular need. Participants in the workshop will be encouraged to weigh these considerations as they compare samples of canned and frozen foods.

There will be a 25 cents charge to cover the cost of the items to be sampled. If you have any questions call your Co-operative Extension Service Office at (313) 973-8510.

A Labor Department publication, "Labor Firsts in America," reports that the first anti-discrimination law against women was in Illinois in 1872, and that in 1879 the first state legislation to prohibit the employment of women in coal mines was in Illinois.

CAROL'S CUTS

328 Wilkinson

Monday, Wednesday and Friday

475-7094

Appts. Only

RICARDO'S HAIR STYLING

107 N. Main, Chelsea

OPEN TUESDAY THROUGH SATURDAY

475-1671

20% OFF
ALL MERCHANDISE
ON SALE FLOOR

All this merchandise is already 50% off.

We will now slash

20% OFF
THIS REDUCED PRICE
DANCER'S
Chelsea's Friendly Dept. Store



Mr. and Mrs. James Leroy Bauer

Kathleen D. Kitchen, James Bauer Speak Vows in Ann Arbor Church

Kathleen Deborah Kitchen and James Leroy Bauer exchanged wedding vows Saturday evening, Sept. 23 at the First United Methodist church in Ann Arbor.

The Rev. Kendall Cowing performed the ceremony for the daughter of Mr. and Mrs. Jerry Kitchen, 2323 Easy St., Ann Arbor, and the son of Mr. and Mrs. Robert L. Bauer, 375 Freer Rd., Chelsea.

Marie Montange sang "Evergreen," "You Light Up My Life," and "We've Only Just Begun." Nancy J. Fischer of Ann Arbor was maid of honor. Bridesmaids were Jamie Fearing of Birmingham; Pat Erskine of Ann Arbor; Jan Sweeney of Grass Lake, sister of the bridegroom; Linda Pearsall of Chelsea, sister of the bridegroom; Kim Waggoner of East Greenwich, R.I., cousin of the bride; and Barb Fredette of Chelsea, aunt of the bridegroom.

Jennifer Sweeney, niece of the bridegroom, was flowergirl. Jeffrey Pearsall, nephew of the bridegroom, was ringbearer.

Ronald G. Sweeney of Grass Lake.

CPR Workshop Slated Oct. 11

What is CPR (Coronary Pulmonary Resuscitation)? How can I recognize a person in trouble? The answers to these questions plus a demonstration of the technique will be the topic of a workshop to be held Oct. 11 at the Washtenaw County Service Center, 4133 Washtenaw Ave., Ann Arbor from 1 to 3 p.m.

Red Cross Instructor, John Taylor, licensed paramedic and emergency medical technician, will demonstrate and discuss the life-saving skill of assisting someone who is choking.

The workshop is sponsored by the Co-operative Extension Service of Washtenaw county and is open to the public at no charge. For more information call the Co-operative Extension Service at (313) 973-9510.

Chelsea Co-Op Nursery Children Make Cider

Children from the Chelsea Co-operative Nursery recently helped to pick apples for cider at Zanmiller's Apple Orchard on Dexter-Ann Arbor Rd.

Using the orchard's hand-cranked cider press, the children assisted in making their own cider by putting the washed apples into the press. After a taste of their labors, they brought the remainder back to school for snack time.

Also during the week, both classes made donuts out of biscuits and Aaron Rinn and his mother brought in an applesauce maker to school and on Friday the four-year-olds made applesauce.

Autumn has been a topic of discussion and the four-year-olds have painted real leaves with orange, yellow, and red and made prints of them.

N. Lake Co-Op Nursery Prepares For Halloween

Preview day and orientation meetings at the North Lake Co-operative Nursery school were well-attended and children at the school are preparing for Halloween by making decorations.

The school will have several festive parties with all the children and teachers dressing in costumes. Two magic shows will be held Oct. 29 with a raffle and refreshments served. Further details are forthcoming.

Reading Council Meets Tonight In Fall Series

Washtenaw Reading Council is pleased to present Dr. Dorsey Hammond as its first speaker of the 1978-79 year, on Thursday, Oct. 5 at 4:30 p.m.

Dr. Hammond, an Associate Professor of Education at Oakland University will give a presentation entitled "Seven Sacred Cows of Reading—and a Little Bull." He will explore seven common practices in reading instruction which are actually myths. He will then inform the group of what really does work.

Dr. Hammond has done intensive work in reading in various states. Dr. Hammond is a former teacher and Right-to-Read consultant. He is a former State Supervisor of Reading for the Maryland State Department of Education. He has also been commissioned by the U.S. Office of Education to prepare a paper on reading.

This presentation will be offered at Ypsilanti High school, 2095 Packard Rd., Ypsilanti.

A complete baked chicken dinner will be offered at the high school from 6 to 7 p.m. Dinner reservations are mandatory.

From 7 until 8:30 p.m. there will be Young Authors workshops. Gerry Palmer and Shirley Goldman from Oakland University will conduct workshops on how to go about motivating students to produce creative writing.

A \$5 membership fee in the Washtenaw Reading Council entitles members to attend all meetings planned for this year. Those who are not members may join on the evening of Oct. 5 or may pay \$2 at the door for this one meeting date.

For reservations or further information phone Pam Bashir (434-3688) or Gwen Guthrie (482-3280). These meetings are open to anyone who is interested in the field of reading.

The first national women's labor organization established in 1867 was the Daughters of St. Crispin, which consisted of female shoemakers. The union lasted until 1878, according to a Labor Department publication, "Labor Firsts in America."



Mr. and Mrs. Clyde Wheeling

Clyde Wheelings Repeat Vows at 43rd Anniversary Ceremony

In celebration of their 43rd wedding anniversary, Ruth and Clyde Wheeling, 4883 Sylvan Rd., Manchester, repeated their wedding vows, Sunday, Sept. 16 at North Sharon Bible church before 75 guests.

The Rev. Ronald Purkey performed the ceremony for Clyde Wheeling and the former Ruth McAtee. Robert Schneider sang "I Love You Truly."

Mrs. Wheeling wore a blue polyester dress with slit sleeves and pleated skirt as she approached the altar on the arm of her son, John Wheeling of Hamburg. Matron of honor was Mrs. Charlotte Aldrich of Chelsea, daughter of the couple. She wore a peach polyester dress with scoop neckline and carried a single gladiolus with white ribbon.

Attendants were Mrs. Kathy Wheeling of Chelsea, daughter-in-law of the couple; Mrs. Kay Wheeling of Hamburg, daughter-in-law of the couple; and Mrs. Dorothy Wencel of Manchester, the couple's daughter. They wore gowns similar in style to the matron of honor's with Kathy's in yellow, Kay's in green, and Dorothy's in blue.

Best man was Louis Wheeling of Chelsea, son of the couple. Ushers included Elbert Stacey of Romulus and Bill Aldrich, of Chelsea, son-in-law of the couple.

A reception was held at the church given by the couple's sons and daughters. Their grandchildren, Ragan and John Wheeling, Ken and Kirk Aldrich, and Cindy Wencel assisted. Libby Massie of Roanoke, Va., niece of Clyde Wheeling, cut the cake for 120 guests.

Diabetics are 25 times more prone to blindness than nondiabetics, 17 times more prone to kidney disease, over 5 times more prone to gangrene (often leading to amputation), and twice as prone to heart disease.

Receiving special recognition were Judy Barkely, the Rev. Fr. David P. Dupuis of St. Mary Catholic church and Sister Pat of St. Mary church.

Also honored was Ellen Parminter, the "senior nutrition lady" who after founding the county senior citizen nutrition program, is retiring after 13 years.

Among those giving special tributes was Ann Arbor Mayor Albert Wheeler.

BOSO Carpet Cleaning

October brings Halloween. So be careful that colored-paper decorations don't contact your carpet. They can cause stains. We recommend Host, the new method of cleaning carpets without water. The carpet is dry and ready to walk on immediately. Use our Host Electric Up-Brush. It's easy. Clean 40 sq. yds. only \$9.95.

MERKEL BROTHERS

SAVE 25%

More walls for less money with
genuine Wall-Tex Wallcovering

Save on beautiful Wall-Tex patterns for every room in your home. Choose from over 1,000 designs in our store. Exciting contemporary, traditional, colonials, fairs, and wet looks. You name it... Wall-Tex Wallcoverings have it. And better yet, Wall-Tex Wallcoverings are scrubbable, strippable, and easy to put up yourself.



So come in while you can save. It's a first-rate deal on America's first name in fabric-backed vinyl wallcovering. But hurry, our sale ends October 15. *Off suggested retail price excluding Anniversary Collection.

Merkel

MAIN ST. IN CHELSEA - PHONE 475-8621
Open Monday, Thursday & Friday 'Til 9 p.m.

LAND AND PEOPLE

The U.S. not only has a substantial acreage of fertile, high productive soil, but fewer people per acre compared to most countries. The U.S. has 437 people per 1,000 acres of arable land; USSR, 453; India, 1,800; China, 3,112; South Korea, 6,850; and Japan, 9,272. It is generally agreed that the USSR and India have sufficient land to feed their people, but yields are low.

GRAIN RESERVES

The farmer owned grain reserves is nearing 688 million bushels of feed grains and wheat. This figure can be broken down to approximately 390 million bushels of wheat and 210 million bushels of corn, along with varying numbers of barley, oats, and sorghum.

Telephone Your Club News To 475-1371.

MICROWAVE COOKING CLASSES

MICROWAVE MEATS AND FISH

Monday, Oct. 9, 10-12 a.m., 7-9 p.m. — \$11

CHINESE COOKING CLASSES

Oct. 5, 12, 19, 26, 7 to 9 p.m.

Cantonese, Szechuan, Mandarin, Huron

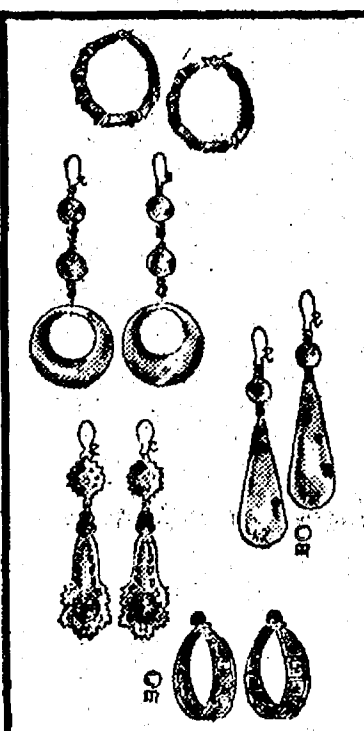
\$15 each

KITCHEN PORT, INC.

415 N. FIFTH

ANN ARBOR

EAR PIERCING



Today's fashion conscious women are unhappy with the limited selection, uncomfortable, and easily lost clip earrings. Pierced ears allow you complete freedom of choice among the many elegant new designs and styles in today's ever changing fashion world.

Carefully designed and engineered, the Inverness System employs the safest most sterile method to accomplish quick, painless, carefree insertion of your first fashionable earring.

We will be happy to make this service available free, with your purchase of our reasonably priced, high quality, gold ball or surgical steel earrings.

This service is available to women of all ages but requires a parent or guardian's signature for all persons under the age of 18 years.

WINANS JEWELRY

YOUR TIME IS COMING
On Sunday, Oct. 8
Chelsea Jaycees Will Present
Their 23rd Annual

CHICKEN BARBECUE

Meals may be purchased at approx. 11:30 a.m.

Meals include: Chicken, Roll, Cole Slaw, Chips.

Cost of Meal: \$3.50

Pop and Coffee are available.

LOCATION: Corner of M-52 and Old US-12
(Next to Meabon's TV)

Treat yourself to a fine meal at a reasonable price and enjoy a pleasant drive in and around the scenic Chelsea area.

COLOR TOUR MAPS AVAILABLE

A Fine Tradition Getting Better!

Proceeds to fund Community Projects of the Chelsea Jaycees.

Chelsea Family Physician Attends Scientific Assembly

Dr. Shirley A. McCormick, M.D., of Chelsea, attended the 30th annual Scientific Assembly of the American Academy of Family Physicians in San Francisco. The medical meeting was held Sept. 25-28. More than 4,000 family doctors participated in this once-a-year continuing medical education conclave.

The local physician, who is a member of the Academy, heard nationally-known speakers discuss up-to-the-minute health care topics. She also attended clinical seminars on a choice of 50 different topics and visited some 100 scientific and 300 technical exhibits.

Subjects covered in this four-day scientific session are of immediate interest to family doctors both in their everyday practices and in their continual endeavors to keep abreast of the latest advances in medicine. This year topics included office management of sexual problems, evaluation and care of the critically ill patient, hypertension and child abuse.

The Academy, headquartered in Kansas City, is the nation's second largest medical organization. It was the pioneer among medical associations in requiring its members to take continuing medical education. Its 40,000 members must complete 150 hours of mandatory continuing study every three years.



ECONOMY LABEL
Smaller type
1000 Labels: \$1.50
The Chelsea Standard
300 N. Main St. Ph. 475-1371

Save Fuel This Winter!
Warp's FLEX-O-GLASS
Tack Up Over Your Windows, Doors, Porch & Breezeway!
CRYSTAL CLEAR, FLEXIBLE PLASTIC
LET THE SUN WORK FOR YOU!
ONLY 54¢
WARP BROS. Chicago 60651
Take this ad to your Hardware, Lumber or Bldg. Supply Store
Accept no substitutes—Get top quality FLEX-O-GLASS

WE HAVE THE GENUINE
Warp's FLEX-O-GLASS
CRYSTAL CLEAR
FLEXIBLE • SHATTERPROOF • LONG LASTING
Only 54¢
Let The Sun Work For You
Holds in Heat • Keeps Out Cold • Saves Fuel

CHELSEA HARDWARE
110 S. MAIN PH. 475-1121

REGISTRATION NOTICE

FOR
GENERAL ELECTION
Tuesday, Nov. 7, 1978

To the Qualified Electors of the
TOWNSHIP OF SYLVAN
(PRECINCT NO. 1 and 2)
COUNTY OF WASHTENAW, STATE OF MICHIGAN

Notice is hereby given that in conformity with the "Michigan Election Law," I, the undersigned Clerk, will, upon any day, except Sunday and a legal holiday, the day of any regular or special election or primary election, receive for registration the name of any legal voter in said Township, City or Village not already registered who may APPLY TO ME PERSONALLY for such registration.

Notice is hereby given that I will be at Chelsea Drug, 101 N. Main St., Chelsea, any day from 8 a.m. to 5 p.m.

Notice is hereby given that I will be at Chelsea Drug, 101 N. Main St., Chelsea, on

Monday, October 10, 1978
- Last Day

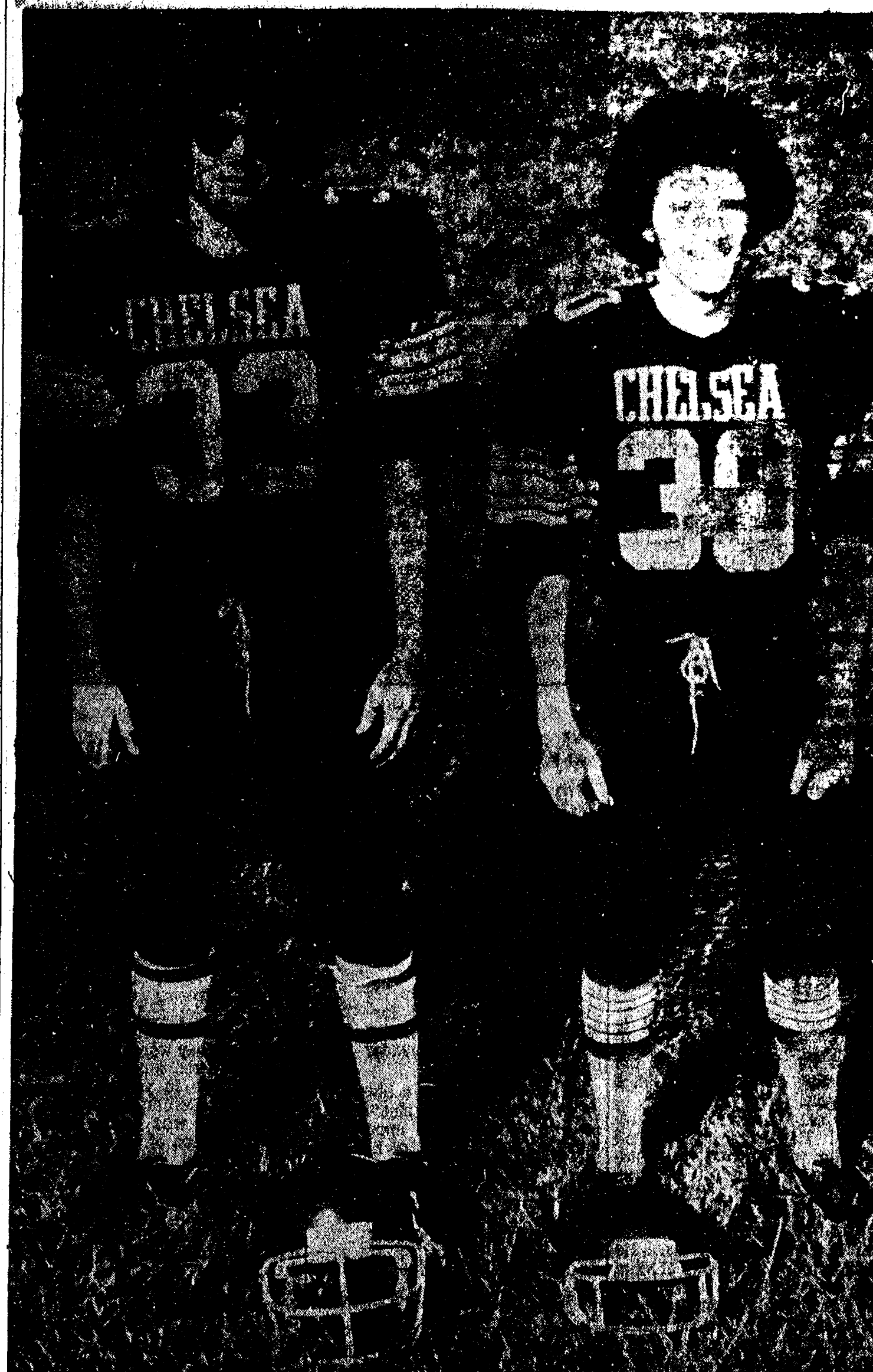
From 8 o'clock a.m. until 5 p.m.
THE 30th DAY PRECEDING SAID ELECTION
And on Saturday, October 7, 1978 - 8 a.m. to 5 p.m.
As provided by Section 498, Act No. 116, Public Acts of 1954
As Amended:

For the purpose of REVIEWING the REGISTRATION and REGISTER-
ING such of the qualified electors in said TOWNSHIP, CITY or
VILLAGE as SHALL PROPERLY apply therefor.

The name of no person but an ACTUAL RESIDENT of the
precinct at the time of registration, and entitled under the Consti-
tution, if remaining such resident, to vote at the next election, shall be
entered in the registration book.

Daniel J. Murphy, Township Clerk

Gridders of the Week



BILL MOORE (33), offensive fullback and defensive end, has returned to the varsity lineup for the second year and to date has played in every winning Bulldog game. Last year, the griddler suffered a football injury early in the season and consequently was unable to play. While the 5'11" 178-pound senior is positioned 90 percent of the time as defensive end "I'd like to play more offense than I have because there is more opportunity to just run with the ball," he commented. As an end, Moore "controls the position by making sure no one goes around me on a long run and when there's an option I see to it that the tailback is fooled when the quarterback pitches," he explained. In the fullback position, he is used "in tight situations when we need a first down and a short yardage run. I also block the tailback on a sweep," he added. Moore's best game this season was with Novi when he made a number of numerous good tackles. "We have a pretty good chance at the conference title this year but South Lyon is going to be rough, real rough; but we're up for the game," he said. He is the son of Robert and Joanne Moore, 19627 Ivey Rd.

BEN KINCE (30), is a senior, second-year varsity member of the Chelsea Bulldogs and holds the rugged sounding position of defensive "monster." When the 5'6", 140-pound griddler isn't tackling the opponent's option man he's an offensive fullback going for the powerman on short yardage runs. Kincaid plays monster more often than the offense position because "it's an aggressive position which I'm good at — because I'm quick," he explained. Kincaid's best game this season was with Novi as he collected several successful tackles. His outlook for the remainder of the season is optimistic and, at the same time, cautious. "We've been good all year and I think we can do it. We will do our best and meet each team on the field determined to win," he said. As for the game with South Lyon, Kincaid commented on Friday afternoon that "they've got a powerful offense and we have been concentrating on our defense all week to meet the challenge. It is going to be a good game." He is the son of Bruce and Barbara Kincaid, 3180 McKinley Rd.

Good Things Growing In Michigan

For a hearty treat on a crisp fall day, try some fresh plum pudding or tart peach pie. Delicious Michigan purple plums and peaches are available now for all your favorite recipes from the state where good things are growing.

This year's plum harvest is predicted to be about 60 percent higher than a year ago with 23,000 tons forecast. Peach production is estimated at 60 million pounds, a 10 percent increase over last year, according to the Michigan Department of Agriculture.

Two major varieties of purple plum-plums, called Italian prunes, grow in Michigan, Stanley and Blufre. Stanleys were introduced from New York in 1926, while Blufres are a cross developed in Missouri in 1947. Blufres have simi-

lar characteristics to the Stanleys but are generally larger. Both varieties are dark blue-black with a firm greenish-yellow flesh and have freestone pits which separate easily from the flesh when ripe.

Similar to plums, peaches have either a clinging or free stone. All nine main varieties of peaches grown in Michigan are freestone. Six Haven varieties, developed at the South Haven experiment station, resist flesh browning for easy canning and freezing.

Both fruits are excellent for snacks and preserving, but why not try some new recipes. Michigan plums are great for a plum sauce, topping for cheesecake or for cooking with beef and poultry. Broiled or baked peaches may

be served as desserts or with ham or duck main courses.

Plums and peaches should be firm, well-formed and free from bruising or marks. Both are very perishable and must be handled with care. If not fully ripe, leave at room temperature for one to two days. Ripe fruit should be refrigerated in moisture-proof containers to prevent spoiling or shriveling and used within three to five days.

Warm September days are ideal for visiting roadside markets or pick-your-own farms. For a free listing write the Michigan Department of Agriculture, P. O. Box 30017, Lansing 48909.

Telephone Your Club News To 475-1371.

WEIGHT REDUCTION CLASSES

OFFERED BY: CHELSEA COMMUNITY HOSPITAL

EIGHT-WEEK SERIES COVERS:

Low calorie cooking tips - Information on fad diets - Exercise and weight reduction - Eating out on a low-calorie diet - Emphasis on use of behavior modification techniques.

Each registrant will receive a personalized diet.

Classes begin October 17 and 19.

Two series offered: 4:00 p.m. Tuesdays and 7:30 p.m. Thursdays.

Registration Fee: \$20.00—\$10.00 deposit required upon registration.

Classes taught by registered dietitians, held at Chelsea Community Hospital. Complete the application below to register.

REGISTRATION AND ENROLLMENT

Name _____ Telephone No. _____ Home _____ Work _____
Address _____ City _____ State _____ Zip _____
Height _____ Weight _____ Age _____ Time Preferred: 4:00 _____ 7:30 _____

I enclose my registration deposit of \$10.00 ☐. (Balance of the fee is due at the first class.)

I enclose my total fee of \$20.00 ☐

Please make checks payable to Chelsea Community Hospital.

Mail to: Chelsea Community Hospital, 775 South Main Street
Chelsea, Michigan 48118, ATTENTION: JULIE SAY, R.D.

Letters to the Editor

To the Editor:
I read with disappointment in the September 7 edition of The Standard, that the Village Council had voted to remove the boat in Veterans Park because of a complaint that it was unsafe for small children.

The boat has some structural defects causing weak spots, but it seems the cost of repairing the boat would be much less than tearing it down and replacing it, of getting new playground equipment of

equal size that the kids would enjoy as much as they enjoy the boat. Of course, save our kids from danger, but let's save our boat, too.

Sincerely,
Shannon Culver.

Editor's note: Village Administrator Fritz Weber indicated in that same issue that the village would attempt to restore the ship at some point next spring in the hopes it could be used for at least another year.

"CEE" BRITAIN

For your needs in
Cut Stone and BRICK

Rt. 1, Jackson (517) 563-2532

Carl's Cleaning Service

521 S. Main St. Chelsea, Mich.

Professional Carpet & Upholstery Cleaning

BUSINESS - RESIDENTIAL

FREE ESTIMATES

Phone 475-8007

PUBLIC HEARING

Lima Township Board of Appeals will hold a public hearing Wednesday, Oct. 11, 1978 at 8 p.m. at Lima Township Hall to hear the case of Floyd and Martha Henry to do auto repairs, mechanical and body work repairs in a C-3 District presently zoned C-1.

LIMA TOWNSHIP ZONING BOARD OF APPEALS

HAROLD TRINKLE, CHAIRMAN

FARMERS' SUPPLY CO.
PHONE 475-1777
Faster gains from better FEEDS
Calves get growing and gain faster on our balanced, fortified Calf Feed... enriched with needed vitamins, minerals.
Complete feeding rations for all your livestock, poultry.

Please Notify Us
In Advance of
Any Change in Address

IN-SEASON SPECIALS
SQUASH - CABBAGE
PEACHES - PEARS
BY THE BUSHEL
WINTER POTATOES
FRESH CIDER
TOMATOES and LIMA BEANS
YOU PICK
Taking Orders for Pure Grapefruit
FARM BAKED DONUTS and BREAD
GEE FARMS
OPEN DAILY, 8 a.m. to 7 p.m.
14928 Bunker Hill Rd, Stockbridge Ph. (517) 769-6772
Take M-52 north to Territorial, turn west, crossing M-106 to Bunkerhill Rd., north 1 1/2 miles to GEE FARMS.

★ District Court Proceedings ★

Week of Sept. 22-28

Kevin Gary Smith pled guilty to possession of open intoxicants on a public street, fines and costs, \$50.

Jacquelyn Sue Lapham pled guilty to driving with a suspended license, fines and costs, \$50.

Jack E. Withrow pled guilty to impaired driving, fines and costs, \$250. He was referred to the Alcohol Safety Action Program.

Marilyn O'Leary pled guilty to speeding, fines and costs, \$50.

Judith Hazen pled guilty to speeding, fines and costs, \$25.

Michael J. Large pled guilty to speeding, fines and costs, \$20.

Brian K. Calloway pled guilty to impaired driving, fines and costs, \$250. He was referred to the Alcohol Safety Action Program.

Darrell Kevin Campbell was found guilty of reckless driving. He was also found guilty of malicious destruction of property. Fines and costs, \$200. He was sentenced to one year probation.

Robert Patterson pled guilty to allowing an unlicensed person to operate a motor vehicle. Fines and costs, \$50.

Linda Anderson pled guilty to failing to yield the right of way and causing a personal injury accident. Fines and costs, \$50.

David Allen Lewis pled guilty to careless driving, fines and costs, \$50 with the fine suspended.

Michael J. VanBuren pled guilty to use of marijuana. Fines and costs, \$100.

Thomas W. Mikesell pled guilty to disregarding a stop sign. Fines and costs, \$75.

Charles Eddie Michele pled guilty to improper registration. Fines and costs, \$40.

Peter Michael Gulla appeared on a bench warrant arrest for driving with a suspended license and pled guilty. Fines and costs, \$100. He was sentenced to three days in jail or 20 days in jail without the fine.

Jeffrey Louis Agosta pled guilty to driving with a suspended license. Fines and costs, \$75. He was sentenced to three days in jail or 20 days in jail without the fine.

William G. Copenhaver pled guilty to impaired driving. Fines and costs, \$250. He was referred to the Alcohol Safety Action Program.

Mark Snyder pled guilty to not having registration plates on his vehicle. Fines and costs, \$15.

Patricia L. Hollingsworth pled guilty to never having acquired an operator's license. Fines and costs, \$25.

Janet Ann Brédernitz pled guilty to driving without a suspended license. Fines and costs, \$100. She was sentenced to three days in jail or 30 days in jail without the fine.

James A. Greene, IV, pled guilty to failing to stop with a clear distance ahead and causing a property damage accident. Fines and costs, \$50.

Thomas G. Krzyzaniak pled guilty to careless driving. Fines and costs, \$50.

Martin Harold Frey pled guilty to failing to stop with a clear distance ahead and causing a property damage accident. Fines and costs, \$50.

Shannon Kay Moore pled guilty to speeding. Fines and costs, \$50.

Dale Edwin Kuebler pled guilty to speeding. Fines and costs, \$50.

Ike Kozminski was found guilty of having Holstein cattle at large. Fines and costs, \$100. He was given six months probation with directions to keep his cattle fenced in.

Janice Marie Beers pled guilty to possession of alcohol at a beach. Fines and costs, \$30.

Pancij J. Johnson was sentenced for use of a controlled substance to fines and costs of \$250. He was sentenced to 10 days in jail or 60 days in jail without the fine.

Jeffrey K. Gransden pled guilty to careless driving. Fines and costs, \$50.

Thomas P. Place pled guilty to driving under the influence of liquor. Fines and costs, \$250. He was referred to the Alcohol Safety Action Program.

Theodore Millman pled guilty to having an overweight vehicle. Fines and costs, \$105.

Chadwick Parish was found guilty of driving under the influence of liquor. Fines and cost, \$250. He was referred to the Alcohol Safety Action Program.

Lori Lynn Lugezzani was found guilty of littering. Fines and costs, \$75.

Mircea Corsatea pled guilty to failing to yield the right of way and causing a personal injury accident. Fines and costs, \$55.

Ernest G. Close pled guilty to driving with a suspended license. Fines and costs, \$75. He was sentenced to three days in jail or 20 days in jail without the fine.

Earl Williams, Jr., was sentenced for driving under the influence of liquor to \$250 in fines and costs. He was referred to the Alcohol Safety Action Program.

Roger D. Hincley was found guilty of impaired driving. Fines and costs, \$250. He was referred to the Alcohol Safety Action Program and sentenced to six months probation.

Harold Elmer Franks was found guilty of driving under the influence of liquor. Fines and costs, \$250. He was referred to the Alcohol Safety Action Program and sentenced to six months probation.

School Board Briefs

At a regular Board of Education meeting Monday, Oct. 2, present were: Tobin, Stirling, Schaffer, Snyder, Feeney, Heller, Schumann, Superintendent Van Meer, Business Manager Mills, Principals Williams and Wojcik, Community Education Director Rogers, and several guests. Meeting called to order at 8 p.m. by President Martin H. Tobin.

Board approved the minutes of the Sept. 18 meeting.

Board approved extension of transportation services to students living south of Old US-12 and west of the fairgrounds, based on continued availability of seating space on the buses.

Board approved the National Bank of Detroit as the paying agent for the \$1 million tax anticipation notes.

Board set a public budget hearing for 7 p.m., Oct. 16, in the Board Room.

Superintendent Van Meer gave the official K-12 membership count for the basis of State Aid at 2,571 students. The Community Education program will involve 700 adults in high school completion, enrichment, and recreation programs.

Principal John Williams reported that the following schools had made a presentation to join the Southeastern Conference: Jackson County Western, Willow Run, Tecumseh, Ann Arbor Gabriel Richard.

Ann Feeney reported on Washenaw County Board meeting.

Dr. Daniel Snyder reported on the meeting he attended pertaining to the voucher plan.

Meeting adjourned at 9:57 p.m.

Good Things Growing In Michigan

Cool spring and warm fall breezes have always given people a relaxing night's sleep. But in the state where good things are growing, Michigan's breezes also help fine grapes to grow for wine and fresh market.

Cool spring breezes off the lakes help grapes resist premature budding, while moderate evening temperatures through fall furnish ample time, before killing frosts, for grapes to vine-ripen.

Michigan's wine industry was developed at close of Prohibition; however, native grapes weren't on't as suitable for wine production as Old World varieties. In 1984 our state's first hybrid plant combined native grapes' tolerance to winter with the flavor of European grapes.

Since the Baco Noir, a French-American hybrid, was introduced, many vineyards of native grapes have been converted to several types of hybrids. Recent planting of Pinot Noir and Cabernet Sauvignon in Michigan soil will soon be yielding wine.

Our state has had tremendous growth in the wine industry in recent years. Thirteen wineries now sell all over our state and in half the nation.

Michigan produces every type of wine including appetizer, table, after-dinner, sparkling, kosher and cooking wines. Fruit wines are a popular variety for after-dinner or punch drinks.

When selecting a wine, look at the label for information on what you are buying. If the word "Michigan" appears on the label, a minimum of 75 percent of the grapes used are grown in Michigan.

All corked wines should be stored on their side to age further and to keep the corks moist. When corks dry out, oxidation occurs and may deteriorate the wine.

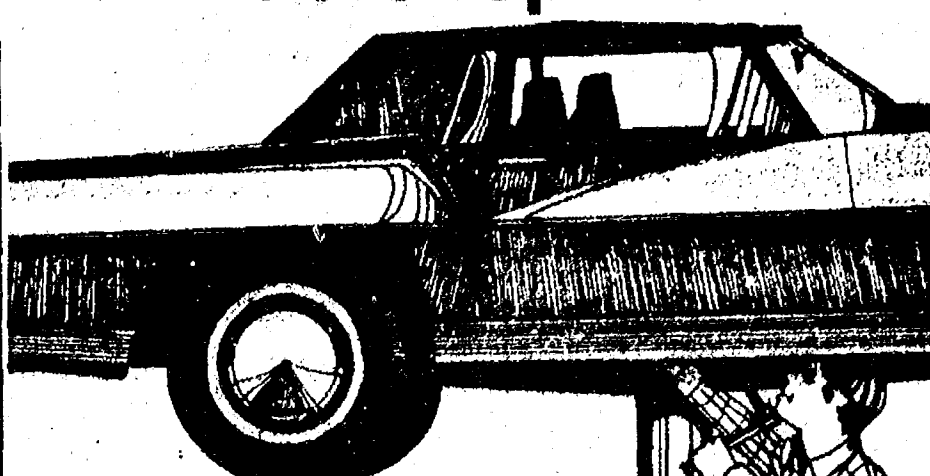
White wines are generally ready to drink when released from the winery; red wines may be consumed young but will round out and mellow with age.

For a mapped tour through Michigan's wine barrel, and 11 other tours, send for the free publication "A Cook's Tour" by writing the Michigan Department of Agriculture, P.O. Box 30017, Lansing 48909.

House and Senate conferees have agreed on an \$18.3 billion budget for the U.S. Department of Agriculture for the 1979 fiscal year. That's \$207 million above the President's budget.

Everyone Wish
JERRY DRESSELHOUSE
A Happy 40th Birthday
Sunday, Oct. 8

Save money on auto repairs



at our new
do-it-yourself auto repair center.

M-52 and I-94

Mobil Self-Repair

Low rent-a-bay rates. Hoist and basic hand tools included.

New Snack Shop too!



Hoffman Tire & Service
7 miles west of Chelsea
13660 E. Michigan
Grass Lake 522-8542

FULL LINE SUPERMARKET
BEER - WINE - LIQUOR
AUTHORIZED
FOOD STAMP STORE
MARATHON GAS PUMPS

Jiffy market
Big Enough To Serve You . . . Small Enough To Know You!

Open 7 Days A Week
7 a.m. to 10 p.m.
Corner Sibley & Werkner Rds.
PHONE 475-1701

Sale Prices Effective Thursday, Oct. 5 thru Sunday, Oct. 8

Guaranteed Satisfaction — Courteous Service — U.S.D.A. Choice Meats

NABISCO		
RITZ CRACKERS	1-Lb. Box	89¢
BULK LONGHORN COLBY		
STORE CHEESE	Lb.	\$1.49
U. S. GRADE A LARGE		
FRESH EGGS	Doz. in Crtn.	69¢
VELVET CREAMY		
PEANUT BUTTER	2-Lb. Jar	\$1.19
U. S. NO. 1 MICHIGAN		
McINTOSH APPLES . . . 3 lbs.		89¢
LONG-HORN		
CHILI with BEANS	15 1/2-Oz. Crtn.	49¢
ROBEY		
Shoestring Potatoes	1 1/2-Oz. Can	19¢
FRESH SOLID		
GREEN CABBAGE	Lb.	19¢
COTT		
RED POP	1/2-Gal. Bottle	59¢
BUNNY POP YELLOW OR WHITE		
POPCORN	2-Lb. Bag	39¢



BASKART SPECIAL KLEEN-MAID BREAD

1 1/4-Lb. Loaf **39¢** 3 Loaves **\$1.09**

FRITO-LAY JIFFY MARKET POTATO CHIPS
Large 14-Oz. Bag **89¢**

JIFFY MARKET MEAT DEPT.

WHOLE PORK LOINS

As is or Sliced **\$1.39** lb. Lean and Tender

PORK BUTT ROAST lb. **\$1.09**

PORK STEAK lb. **\$1.29**

HICKORY SMOKED SLAB, Whole or End **Bacon** . . . lb. **\$1.09**

32-OZ. PKG. COURTLAND VALLEY'S FINEST **Sauerkraut** . . 39¢

10-OZ. PKG. ECKRICH **Smok-y-Link** \$1.19

HERRUD **Liver Sausage** . . . lb. 79¢

HOME-MADE GARLIC OR REG. **Pk. Sausage** \$1.09

MICHIGAN CHUNK **Bologna** . . lb. 99¢

JIFFY MARKET MARATHON GAS
Top Quality Gas

REGULAR
GAS 63.9

OPEN 7 DAYS A WEEK
7 a.m. to 10 p.m.

Relax in your car - We pump your gas.

Homogenized
MILK
\$1.39 gal.

Buy the Best - Buy Farm Maid!



LOW-FAT MILK . . gal. \$1.19

HALF & HALF . . . qt. 79¢

1-LB. CRTN. **COTTAGE CHEESE** . . . 59¢

A JIFFY MARKET SERVICE
BEEF AND HOGS
HAULED AND SLAUGHTERED
CUSTOM CUTTING, GRINDING, WRAPPING and FREEZING.
CUT, WRAPPED, FROZEN TO YOUR SPECIFICATIONS

AS PUMPS & STORE OPEN 7 a.m. To 10 p.m. 7 Days a Week — U. S. Authorized Food Stamp Store — Daily & Sunday Papers

Community Calendar

Week of Oct. 5-12
1978

Lima Center Extension Group will not meet at Lima town hall due to renovation. Instead, meet at extension meeting room, 4133 Washenaw Rd., Ann Arbor, Wednesday, Oct. 11, 9:30 to 11:30 a.m., and 1 to 3 p.m. Morning topic, the cost and quality of food. Afternoon topic, cardio pulmonary resuscitation. Bring sack lunch.

Rummage Sale, North Lake United Methodist church, 1411 North Territorial Rd., Friday, Oct. 13 and Saturday, Oct. 14, 9 a.m.-4 p.m.

Closed A. A. and Al-Anon meetings, Chelsea Community Hospital, every Monday and Thursday, 8:30 p.m.

Father and Son Dinner, Oct. 14, 6:30 p.m. at Waterloo Township Hall.

Limaneers, Thursday, Oct. 5, home of Mrs. Lionel Vickers. Pot-luck dinner at 12:30 p.m.

6th annual Firemen's Ball, Saturday, Oct. 7, 9:30 p.m. to 1:30 a.m. at the Chelsea Fairground's service center. Tickets available from any firefighter. Live music by "The Researchers."

Lamaze childbirth preparation classes. For information call 475-9558 or 475-9316.

Chelsea Co-op Nursery is now taking applications for the 1978-79 school year. To enroll, call Barb Raney, 475-1118 or Sue Machnik, 426-4776.

Lyndon Township Planning Commission meets the second Thursday of the month at the Township Hall, 8:30 p.m.

Chelsea Jaycee Auxiliary membership meeting, 3rd Tuesday of every month. Call the president, Sandy Meyer, for place and time at 475-2796.

Chelsea Community Farm Bureau, Thursday, Oct. 12, 8 p.m. at the home of Mr. and Mrs. Leon Sanderson.

Chelsea Area Historical Society, regular meeting, Monday, Oct. 9, 3 p.m. at McKune Memorial Library.

Pack 445, first pack meeting, Thursday, Oct. 12, South school, 7 p.m.

Chelsea Child Study Club, Tuesday, Oct. 10, home of Nancy Grau, regular meeting and "Let's Disco" program led by Margie Brooks. Guest's welcome. Bazaar workshop home of Mary Jo Miller, 9:30 a.m., Oct. 10.

Royal Arch Masons No. 140, regular communication, Thursday, Oct. 5, 7:30 p.m. at the temple.

Food Stamp Outreach Program has various kinds of literature about the Food Stamp program. You may receive this information by mail, by calling the Food Stamp Outreach office, Monday through Friday, 8 a.m. to 5 p.m., 994-1863.

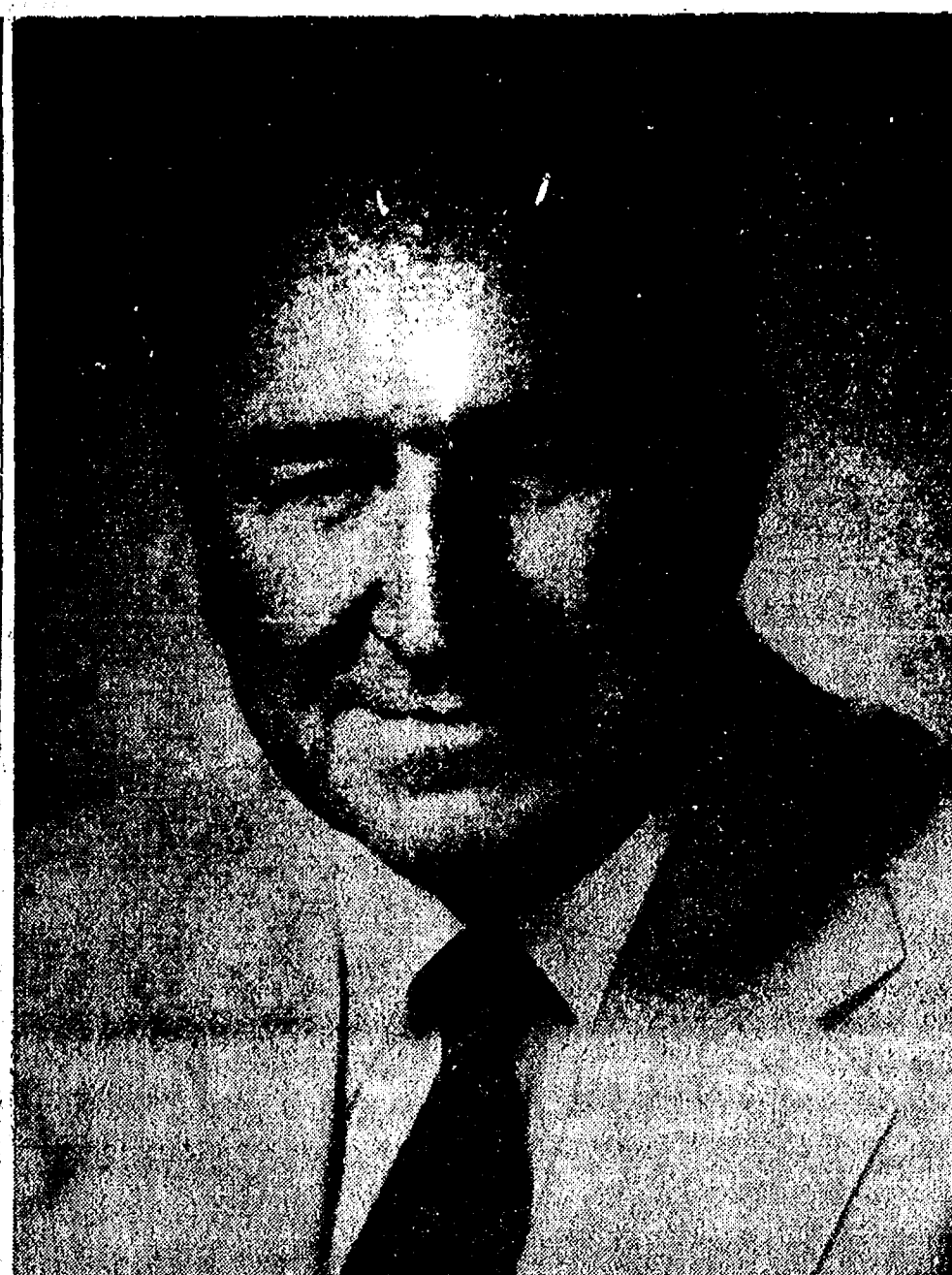
Lyndon Township Board regular meetings the third Tuesday of each month, 7 p.m., in Lyndon Township Hall.

Senior Citizens meet the third Friday of every month. Pot-luck, games, and cards at St. Mary's school, 6 p.m.

American Legion hospital equipment is available by contacting Larry Gaken at 475-7891.

Chelsea Communications Club, fourth Wednesday of each month at 7:30 p.m., in the Chelsea Lanes basement meeting room.

Chelsea Home Meal Service delivers one hot meal a day to elderly and disabled living in the



WILLIAM BOTT will be the new branch manager and assistant vice-president for the soon to open Ann Arbor Trust Co. at 1478 Chelsea-Manchester Rd., just west of M-52. Bott headed the Ann Arbor Chamber of Commerce for 16 years and before that he was the director of the Chamber of Commerce in the communities of Niles and Three Rivers. More recently, he was associated with the Caldwell & Reinhardt Co. He is a member of St. Joseph Mercy Hospital Special Events Committee and was instrumental in the establishment of Washtenaw Community College. He has served as secretary and commissioner on the Ann Arbor City Planning Commission. He and his wife Jerrie and their family currently reside in Ann Arbor but have plans to move to Chelsea in the near future.

Branch Bank Opening

(Continued from page one)
Institute of Organizational Management.
He, and his wife Jerrie and their family presently reside in Ann Arbor, but plan to move to Chelsea in the near future.
It was also announced that Jo Anne Lyke has been named as the assistant manager and head teller. Jo Anne was with the National Bank of Ypsilanti for five years prior to joining the Trust Company in August of 1974 as a teller. She received promotions to assistant head teller in September of 1976 and to customer service representative in December of that year.
Jo Anne graduated from Pioneer High school in Ann Arbor. She, her husband Jim and their daughter reside in Ypsilanti.

Chelsea Jaycee membership meeting, First Tuesday of every month, 7:30 p.m., Chelsea Lanes basement meeting room. For information call Charlie Sprawka, 475-1860.

Sylvan Township Board meeting the first Tuesday of the month, at 7 p.m., at Sylvan Township Hall.

Sharon Township Board regular meeting first Thursday of each month, 8:30 p.m.

Harmony Rebekah Lodge of Dexter invites Chelsea Rebekah Lodge to their visitation Monday, Oct. 2. Special program afterwards.

St. Mary Altar Society, Monday, Oct. 2, 7:30 p.m., school hall. Bring scissors and old sheeting for the Vets Hospital tracheotomy covers. Remember Christmas ornament.

Stockbridge American Legion Dance, Oct. 7, 9 p.m. to 1 a.m. Music by the Playboys.

Lima Township Planning Commission will meet on the second Monday of each month at 8 p.m. at Lima Town Hall.

Lions Club, first and third Tuesday of every month, 6:45 p.m. at Chelsea Community Hospital.

FEED USE OF ANTIBIOTICS
A recent report by the Office of Technology Assessment (OTA), a congressional agency, on drugs and chemicals in livestock feeding stated: "OTA could not find a single proven case of human illness made more serious by resistant bacteria resulting from feed use of antibiotics."

Let a Standard Want Ad sell your unwanted items!

REGENCY TRAVEL

The Friendly Tour Store on the Corner

WORLD WIDE VACATION TRAVEL

AIRLINE - AMTRAK - CRUISES - CHARTERS

We Welcome Corporate & Commercial Accounts

ALL MAJOR CREDIT CARDS HONORED

601 E. WILLIAM ST.

ANN ARBOR, MICH. 48104
Corner Myonard & William

CALL
665-6122

NO SERVICE CHARGE

BOOK YOUR XMAS TRAVEL EARLY

DEATHS

E. Donovan Purdy, III
Dies from Injuries in Car-Bicycle Accident

E. Donovan Purdy, III, 6, 304 South St., died Saturday, Sept. 30, from injuries sustained in a car-bicycle accident in front of his home.

He was born Jan. 28, 1972, the son of Edward and Cathy Purdy. He was a member of the first grade at South Elementary school in Chelsea.

Survivors include his parents; maternal grandparents, Mr. and Mrs. John Barnes of Utica; and paternal grandparents, Mr. and Mrs. Edward Purdy, Sr., of Grosse Pointe.

Visitation was held Sunday, Oct. 1 and private services were conducted Monday, Oct. 2 at the Burghardt-Cole Chelsea Chapel. The Rev. Fr. Raymond Rademacher officiated. Burial took place at Michigan Memorial Park in Flat Rock on Monday, Oct. 2.

Memorial contributions may be made to the Neo-Natal Intensive Care Unit at St. John's Hospital, Moross Rd., Detroit.

Arrangements were handled by the Burghardt-Cole Chelsea Chapel.

Edward J. Wengren

Lima Resident Dies Monday at Hospital

Edward J. Wengren, 58, 12780 Luick Dr., died Monday, Oct. 2 at Chelsea Community Hospital.

He was born Nov. 4, 1919 in Inkster, the son of Stephen and Anna (Osadacz) Wengren. On Nov. 15, 1943 he was married to Celia Konopka. She survives.

Mr. Wengren had worked at Hoover Ball & Bearing Co. until retiring in 1969. He was a U. S. Army veteran who served during World War II in the Aleutian Islands. He was a member of St. Mary Catholic church.

In addition to his widow, he is survived by his mother, Mrs. Anna Wengren of Leesburg, Fla.; three sons, Lawrence Wengren of East Lansing, Ronald Wengren of Ann Arbor, and Matthew Wengren of Chelsea; two daughters, Mrs. Paul (Catherine) Rockett of Los Alamitos, N. M., and Bonnie Wengren of Ann Arbor; one grandson, Kevin Wengren of Orlando, Fla.; and two sisters, Mrs. Genevieve Soja of San Francisco, Calif., and Tessie Wengren of Leesburg, Fla.

Funeral services will be held Thursday, Oct. 5 at 11 a.m. at St. Mary Catholic church with the Rev. Fr. Philip Dupuis officiating. Burial will follow in Mt. Olivet Cemetery. The Rosary was recited Wednesday evening, Oct. 4 at the St. Mary Catholic church.

Dr. Merle G. Wood

Former Chelsea Resident Dies Sunday at Pentwater

Dr. Merle G. Wood, 71, of Hart, and formerly of Chelsea, died Sunday, Oct. 1 in Pentwater. He was born Feb. 2, 1907, the son of Dr. Orly and Eva (Luick) Wood in Hart.

He is survived by his widow, Martha, of Hart; two daughters; several grandchildren; one aunt of Saline, Mrs. Clara Luick; and several cousins including Leigh Luick of Chelsea, David and Dwight Beach of Chelsea, and Barbara Stephenson of Ann Arbor.

Funeral services were held Wednesday, Oct. 4 at the First Congregational church in Hart. Burial followed in Hart.

BIRTHS

A daughter, Christina Marie, Sunday, Sept. 24 at St. Joseph Mercy Hospital, Ann Arbor, to Joe and Judy Merkel of Chelsea. Maternal grandparents are Mr. and Mrs. Tony Pazzi of Owosso. Paternal grandparents are Mr. and Mrs. Joseph Merkel, Jr., also of Owosso.

Subscribe today to The Standard!

Harriers Win Over S. Lyon

With many runners turning in their best times, Chelsea harriers dumped South Lyon, 18-45, in a meet held Thursday, Sept. 28 at Inverness Country Club.

"It was a good over-all performance," Coach Pat Clarke commented on his young team's win.

Paving the way for Chelsea was senior co-captain Pat Murphy, in first place with an excellent time of 16:59. Close behind was junior Mark Beyer with a personal best time of 17:15 to place second.

Other Bulldog placers were Jeff Bradley, 4th, 17:23; Bob Benedict, 11th, 17:28; Bob Schleede, 6th, 18:11; Rich Stephens, 7th, 18:32; Mark Stevenson, 8th, 18:34; Duane Robbins, 10th, 19:00; and Randy Bohl, 11th at 19:04.

The win leaves the team with a 2-1 record in the league and 3-4 over-all.

In the girls run, Chelsea was defeated 31-25 by the Lions. Placing for Chelsea were Priss Drew, 3rd, 20:37; Nancy Hastings, 4th, 21:24; Cheryl Harker, 6th, 22:23; and Teresa Hoffman, 7th, 22:51.

While today's urban dweller certainly lives in a noisier environment than most persons residing in rural atmospheres, farmers also may encounter excessive sound levels.

Frosh Gridders Lose to Fired-Up South Lyon

Facing a fired-up South Lyon team, Tuesday, Sept. 26, Chelsea high school freshman football squad met their second defeat of the season, falling to the Lions, 38-6.

First quarter action saw Chelsea offense moving the ball well but without scoring. Defensively, Chelsea was hard pressed to contain their opponent's wishbone offense and by the quarter's end the Bulldogs trailed, 16-0.

Combining the spirited running of Ray Williams and Ross Murphy and the strong blocking of Doug Inglis, Dave Harrison, Tim Whitesall, Todd Sprague and Rick Poljan, the Bulldogs hustled for a 61-yard drive for a touchdown. Highlighting the drive was a fake punt on a fourth down and nine yards to go when punter Toby Boyd rolled out and threw a pass to Gary Van Meer good for 10 yards and a first down.

A few plays later, Ray Williams sprinted the final six yards for the touchdown to set the halftime score at 16-6. Before the first half was over, Chelsea's defense tightened and foiled South Lyon at the one-yard line.

Despite a moving Chelsea offense in the second half, South Lyon thwarted all attempts to score while they added three more touchdowns to take a 38-6 victory.

Leading Chelsea's offense were Ray Williams, fullback-tailback, who carried 21 times for 108 yards, while Ross Murphy added 50 yards on nine carries and returned a kickoff for 55 yards. Also gaining yards were Steven Grau with 11; Van Meer, seven; Toby Boyd, four. Grau completed two passes.

On the defense, inside linebacker Jeff Klink and end Ray Williams both had 11 tackles. Todd Sprague had eight while Rick Poljan, Ross Murphy, and Dave Harrison added seven tackles apiece.

The frosh next meet Jackson Lumen Christi at home Tuesday, Oct. 3 at 7 p.m.

The Labor Department was created by a 1913 act of Congress as a Cabinet-level agency to "foster, promote and develop the welfare of the wage earner of the United States, to improve their working conditions, and to advance their opportunities for profitable employment."

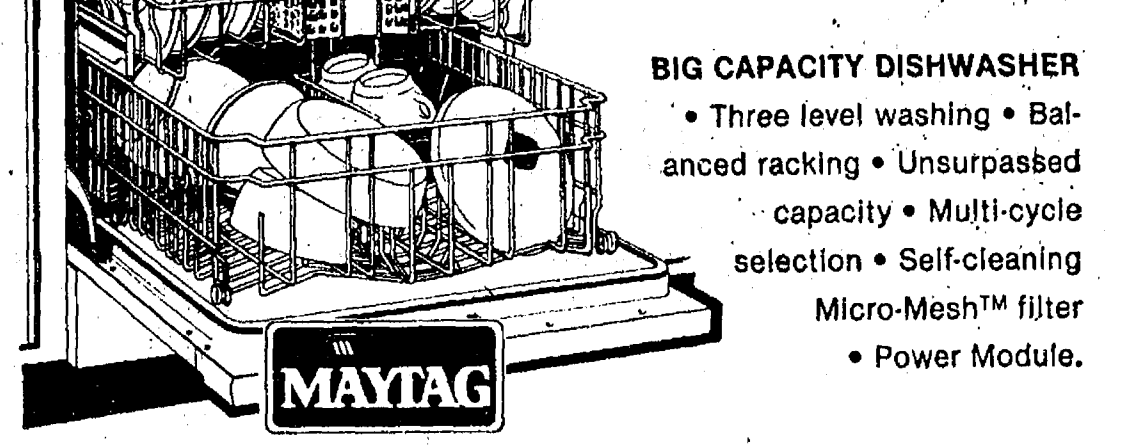
During pregnancy diabetes increases the chances of premature delivery and fetal mortality.

SAVE up to \$40

Final Clearance on Maytag

Dishwasher discontinued models

New Maytag models on the way. Act now and SAVE



BIG CAPACITY DISHWASHER

- Three level washing • Balanced racking • Unsurpassed capacity • Multi-cycle selection • Self-cleaning Micro-Mesh™ filter • Power Module.

\$25 factory refund on new Maytag Jetclean dishwashers

Save \$25 with factory savings certificate in current magazines and Cascade cartons

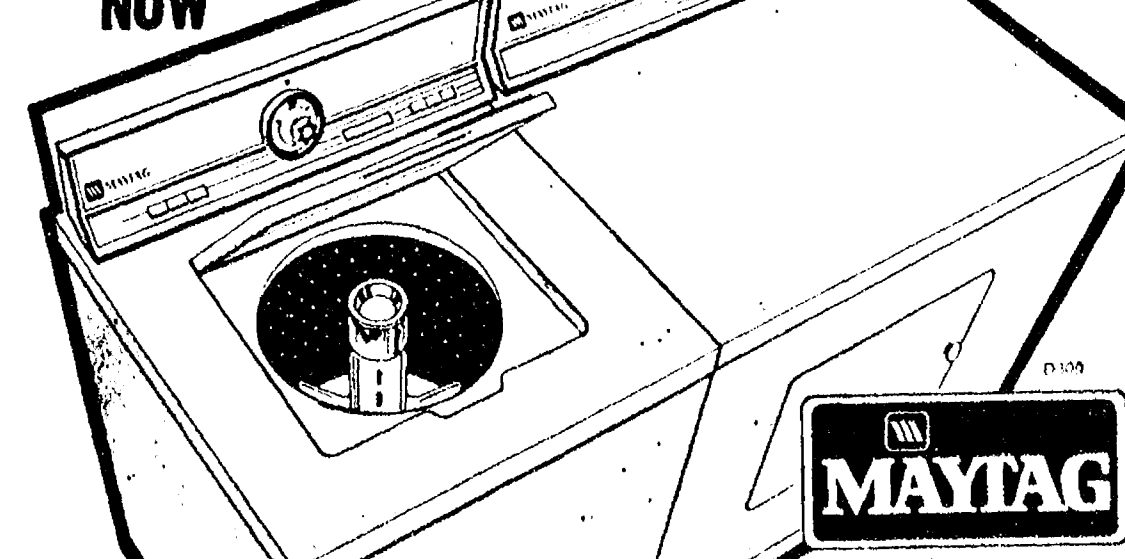


Tested exclusive Maytag Jetwash action/Compare/Smaller holes mean high velocity jet spray • Powerdry circulates air without heat • New styling, smart colors • Tested exclusive Maytag Micro-Mesh™ Filter

Nobody gets dishes cleaner than Maytag

Save up to \$52 on a pair of Deluxe Maytags

STARTS NOW



SAVE UP TO \$30 over previous Maytag big tub models.

- Energy efficient operation • All fabric cycle selection • Power Fin™ agitator • Self-cleaning, long-lasting porcelain tub • Built to last longer and need fewer repairs.

SAVE UP TO \$22 over previous Maytag auto-dry models.

- Fast, energy efficient operation • Big capacity to handle big loads • Low temp Stream-of-Heat™ drying • End of cycle signal reminder.

HEYDLAUFF'S

113 N. Main St., Chelsea Ph. 475-1221

Martin-Senour Paint Sale!

Save your walls. Save your wallet.



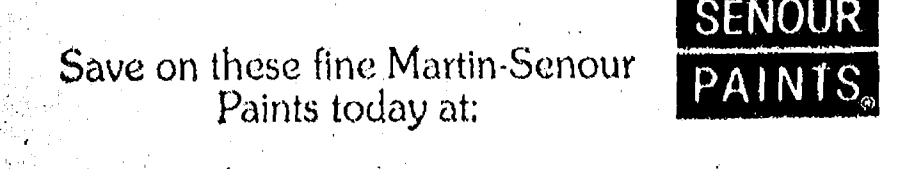
Flat Latex NOW \$9.99 gal. Regular \$11.25

- Beautiful, flat finish in hundreds of decorator colors.
- Fade, spot, stain resistant.
- Lasts for years -- washable.
- Goes on easy, soap and water clean-up.
- Safe for children's rooms.



Satin Gloss Latex NOW \$12.50 gal. Regular \$13.95

- Perfect for kitchens, bathrooms, woodwork.
- Color-matched to Bright Life™ Flat Latex.
- Durable -- scrubable.
- Safe for children's rooms.
- Soap and water clean-up.

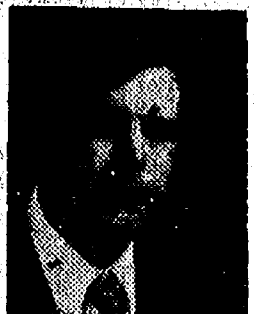


Low Lustre Latex NOW As Low As \$11.95 gal.

- Vivid, ultra deep colors for interior walls and woodwork.
- Durable -- scrubable.
- Easy to apply -- fast drying.
- Fade, spot and stain resistant.
- Safe for children's rooms.

Save on these fine Martin-Senour Paints today at:

GO GAMBLER'S



Real Estate

By PAUL FRISINGER

REALTOR

THAT BEAUTIFUL LEVERAGE

One of the great advantages in real estate investment is that wonderful word called leverage. In its simplest terms, it means using someone else's money to vastly increase your profit potential.

Real estate has traditionally been very good security for loans. This means that real estate can be acquired with a smaller percentage of cash outlay than most other investments.

Leverage arises because ALL of the income and ALL of the appreciation in property value belongs to the property holder regardless of the amount of the loan.

To illustrate, assume a \$100,000 property was purchased for only \$10,000 cash and a \$90,000 mortgage loan. Five years later, the same property is sold for \$150,000 (a 50% gain in value). After paying off the \$90,000 mortgage, the investor would realize, not a 50% gain, but rather a 500% gain on his actual cash investment because he only invested \$10,000 not \$100,000 for the property.

If there is anything we can do to help you in the field of real estate, please phone or drop in at FRISINGER REALTY CO., 935 S. Main St., Chelsea. Phone: 475-8683; evenings 475-2621. We're here to help!

475-8689
475-2030

115 PARK ST.
CHELSEA, MICH.

MAYER AGENCY

(of Springer-Kleinschmidt Agency Inc.)

Your Local Independent Insurance Agency providing dependable protection and prompt claim payment through 10 of the nation's leading insurance companies.

HOME - AUTO - BUSINESS INSURANCE



Sheridan W. Springer
Ruth DeVino

Charles A. Kleinschmidt
Micky Quackenbush

RICK'S MARKET

20490 M-52

"The Store with the Spartan on the Door"

Phone 475-2898

HUNGRY JACK
MASHED POTATOES
16-Oz. Box **99¢**

MARIO'S
GIANT RIPE OLIVES
7 1/4-Oz. Can **55¢**

SPARTAN
STRAWBERRY JELLY
32-Oz. Jar **\$1.03**

SPARTAN
SANDWICH COOKIES
24-Oz. Box **85¢**

16-OZ. CRTN. BORDEN'S

COTTAGE CHEESE 69¢

RICK'S HOT BREAD DAILY

Weekdays by 3:30 p.m. Sat. & Sun., by 10:30 a.m.

(QUANTITY RIGHTS RESERVED)

RICK'S HOME STYLE PIZZAS

Take-Out Only

Sun., 5 to 10 p.m.
Thurs., 5 to 10 p.m.
Fri. & Sat., 5 to 11 p.m.

PHONE
475-2898

BORDEN'S
LO-FAT MILK
Plastic Gallon **\$1.41**

ECKRICH
SLICED BOLOGNA
1-Lb. Pkg. **\$1.59**

SNOW'S NEW ENGLAND
CLAM CHOWDER
15-Oz. Can **89¢**

UNDERWOOD
Deviled Ham or Corned Beef Spread
57¢

JV Gridders Pound Out Win Over Lions

Playing a neck and neck game through the entire four quarters, Chelsea junior varsity Bulldogs emerged the thrilling victors, as they wrestled a 22-13 win over South Lyon, Thursday, Sept. 28, to give them a 3-1 record.

They face the undefeated Milan gridders tonight at home at 7 p.m. South Lyon scored early in the first quarter and kicked the extra point for a 9-7 lead. Chelsea's Bill Freeman avenged the play, running six yards for a touchdown. The extra point attempt failed and the Bulldogs trailed, 6-7.

Anticipation hung heavy throughout the second and third quarters as both teams battled defensively and while Chelsea controlled the game, they were unable to score.

Cracking open the stalemate, Bill Freeman ran one yard in the fourth quarter for a touchdown and ran the extra point to give Chelsea a 14-7 lead. It was threatened, however, when the Lions ran for six points. Chelsea battered down their fake kick and pass leaving a score of 14-13.

With four seconds to go, John

Preston ran five yards for the Bulldogs' third touchdown and Carl Simpson ran the extra points to set the final score at 22-13.

Leading tacklers were Carl Simpson 12; Chris Heaton, nine; Brian Dault, eight; Jeff Dils, seven; Bill Freeman, six; Sandy McLaughlin, four; Sean Peterson, three; John Preston, three; Mark Steinaway, three; Ken Elliott, two; Jon Riemenschneider, two; Les Hafner, two; Keith Hegadorn, one; Kirk Stubbs, one; Jeff Price, one; and Sterling Vorus, one.

Sean Peterson and Jeff Dils each had an interception and Les Hafner recovered a fumble.

The offensive line of Craig Thams, Brian Dault, Sandy McLaughlin, Chan Lane, Eric Headrick, Kirk Stubbs, Chris Heaton, Ken Hopkins, and Jon Riemenschneider did a superior job.

Craig Thams, Carl Simpson, and John Preston combined some outstanding blocking, to pave the way for the Bulldog touchdowns.

In offensive yardage, John Preston led with 104 yards, followed by Bill Freeman with 75; Jeff Dils, 57; Carl Simpson, 50; and Craig Thams, 13.

"The team showed a lot of desire and determination in coming from behind in the first quarter and playing a very strong defense," Coach Jon Schaffner said. "This week it's really a big game as Milan comes to Chelsea with a perfect 4-0 record. Chelsea is in a 'must win' situation if they have any hopes for a league title," Schaffner commented.

Need Pledges for Special Olympics Marathon Runner

On Nov. 4, Nancy Cooper, area 20 Special Olympics Director, is planning to run a 26-mile marathon in Grand Rapids. She is doing this to raise money for the Washtenaw County Special Olympics and is asking anyone to pledge so much per mile. She is hoping to have more than 100 people and service clubs pledge \$1 per mile so she can make \$2,600 for the Olympics. She may be contacted at 475-9131, ext. 49, after Sunday, Oct. 8 or she will be coming around to visit businesses and clubs.

She is more than willing to accept pledges of anything more or less than \$1. Every little bit helps.

THE CHELSEA STANDARD

Second Section

CHELSEA, MICHIGAN, THURSDAY, OCTOBER 5, 1978

Pages 7-14



IT'S NEVER TOO EARLY to start thinking about prep football as indicated by the performances of these 8- to 10-year-olds during the Punt, Pass, and Kick competition Monday. The annual event was held in co-operation with Palmer Ford, Inc., and the Chelsea Jaycees. Trophy winners in front are from left to right, 8-year-olds Heidi Knickerbocker, 1st; Jeff Hatt, 2nd; Steve Favers,

3rd; and 9-year-olds Mark Bareis, 1st; Robbie McDowell, 2nd; and Todd Starke, 3rd. In the middle are 10-year-olds Kevin Morris, 1st; Thomas Miller, 2nd; and Brian Robeson, 3rd. Bringing up the rear are Bob Smith, Jaycee; Jim Morton of Palmer Ford; John Williams, chairman for the Jaycees; Morgan Rowe, Jaycee; and Jerry Martell, Jaycee.



WELL EXECUTED KICKS AND THROWS earned these young football gridders trophies in Monday's Punt, Pass, and Kick contest sponsored by Palmer Ford, Inc., with the help of the Chelsea Jaycees. In back, from left to right, are Dave Wojcicki, 13, first; Bob Meyer, Jaycee; Wilson Morley, 13, second; Sylvester Wojcicki,

Principal of South Elementary school; Bill Merkel, 13, third; and Norm Colby, Jaycee. Kneeling in front from left are 11 year olds Scott Jones, first; Brett Knickerbocker, second; Chuck Downer, third; and 12 year olds David Kiel, first; Marty Steinhauer, second; and Eric Schaffner, third.

Lady Cagers Fall to 'Hot' Brighton Team

You Read It First in The Standard!

Chelsea lady cagers met the class of the Southeastern Conference last Tuesday when they traveled to Brighton and came out on the short end of a 90-42 score.

Brighton came out blazing from the opening whistle to pull in front, 22-7, by the end of the quarter. "It may be hard to believe, but we didn't play badly," said Coach Jim Winter. "They shot 50 percent in the first quarter and close to 50 for the rest of the game. They were ready for us and with the talent they had they really stuck us," he said.

Chelsea's offense picked up in the middle stanzas as they managed 17 and 14 points. The Bulldogs of Brighton continued to scorch the nets, piling up 45 markers in the mid sixteen minutes.

Nanette Push continued to lead the Bulldog scoring, pumping in 15 points. Push also grabbed five rebounds and 5 steals. Mary Boylan played her best game of the young season, tallying 14 points and snaring 12 rebounds.

Five other Bulldogs put points on the board. Sheryl Kiel threw for six; Tammy Collinsworth, Jennifer Ringe, and Kim Wood collected two each and Lee Anne Owings chipped in one. Wood also added eight rebounds and three steals.

Chelsea's record now stands at 0-2 in the Southeastern Conference and 2-3 over-all.

The Labor Department's Bureau of Labor Statistics keeps track of changes in employment and prices.

Thank You...

On Oct. 1 I have left the Pump & Pantry and in this way would like to thank everyone for their patronage during my stay as manager. It was a privilege to serve the people of Chelsea and I shall always remember the many friends who made my stay so enjoyable. A special thanks to everyone who worked for me during this time.

DON ALBER



Today's fashion mood is one of adaptability and co-ordination. With the help of PURITAN sweaters and HAGGAR slacks that mood is reflected.

SWEATERS from \$22.50
SLACKS from \$18.00

Store Hours: Open Mon. thru Sat., 8 a.m. to 5:30 p.m.

STRIETER'S MEN'S WEAR

Since 1914

Ads
Taken
Till 1 p.m.
Tuesday

PUT IT IN THE WANT FOR RESULTS

Just
Phone
475-1371

WANT ADS

The Chelsea Standard

WANT AD RATES
PAID IN ADVANCE. All regular advertisements, 10 cents for 20 words or less, each insertion. Count each word as a word. For more than 20 words add 3 cents per word for each insertion. Single copy 50¢. For box number add 10¢ extra per insertion.

CHANGE RATES—Same as cash in advance, with 20 cents booklet. Charges if not paid before 1 p.m. Tuesday preceding publication. Pay in advance, and cash or stamps and give 25 cents.

DISPLAY WANT ADS—Rate \$1.40 per column inch, single column, width only 6-point and no more than 10 lines. No borders or boldface type. Minimum 1 inch.

CARDS OF THANKS or MEMORIALS—Single paragraph style, \$1.50 per insertion for 30 words. Less 1 cent per word beyond 30 words.

COPY DEADLINE—1 p.m. Tuesday week of publication.

ERRORS—Advertisers should check their ad the first publication. This newspaper will not be liable for errors in the ad when the error occurred, errors in publication except to the extent of the cost of the ad for the first week's insertion. Adjustment for errors is limited to the cost of portion of the ad when the error occurred.

GARDEN TRACTOR—16 h.p.; twin cylinder, 48" mower, 48" snowblade, plow, half-ton trailer, weights, \$1,900 or best offer. Ph. 475-8975. x17

BODY SHOP
COMPLETE FULL TIME
Estimates Available
PALMER FORD
222 S. Main 475-1301 404

STEP UP TO KOZMA CONSTRUCTION And Step Down In Price
LICENSED BUILDER
FREE ESTIMATES COMPLETE CONSTRUCTION SERVICES
CALL LEN KOZMA 475-7452 291f

PRIME
4.5-ACRE BUILDING LOT, 1 1/2 miles north of Chelsea. Perked, zoned, and ready to go. \$13,900. Will build to suit.
Weber Homes
Ph. 475-2828

INSIDE GARAGE SALE—Friday and Saturday, 7997 Grand, Dexter. Ph. 426-3355. 5 h.p. riding lawn mower, Kelvinator 2-door frost-free refrigerator, Amana refrigerator, both 32x66", 3-piece black naugahyde couch, table in center, Speed Queen gas clothes dryer, Frigidaire automatic washer, 3 metal dressers, formica tops, 2 drawers, 24x35x37" high, electric stove, gas stoves, 30" chairs, tables dehumidifier, lots of other things. x17

1-517-522-8469
Findlay, eves., week-ends.
1-517-522-4816 17

PRODUCTION WORKERS—Plastic operation needs people to trim parts and work on vacuum warmers. No experience necessary. Autoform, Inc., 161 Enterprise Dr. Ph. 994-0150. x17

WANTED—Good home for AKC poodle. Black male, 17 months. \$30. Ph. 426-2168. x17

MAUSOLEUMS * MONUMENTS
BRONZE TABLETS * MARKERS
BECKER MEMORIALS
6033 Jackson Road
ANN ARBOR, MICHIGAN

1-517-522-8469
Findlay, eves., week-ends.
1-517-522-4816 17

PRODUCTION WORKERS—Plastic operation needs people to trim parts and work on vacuum warmers. No experience necessary. Autoform, Inc., 161 Enterprise Dr. Ph. 994-0150. x17

WANTED—Good home for AKC poodle. Black male, 17 months. \$30. Ph. 426-2168. x17

MAUSOLEUMS * MONUMENTS
BRONZE TABLETS * MARKERS
BECKER MEMORIALS
6033 Jackson Road
ANN ARBOR, MICHIGAN

1-517-522-8469
Findlay, eves., week-ends.
1-517-522-4816 17

PRODUCTION WORKERS—Plastic operation needs people to trim parts and work on vacuum warmers. No experience necessary. Autoform, Inc., 161 Enterprise Dr. Ph. 994-0150. x17

WANTED—Good home for AKC poodle. Black male, 17 months. \$30. Ph. 426-2168. x17

MAUSOLEUMS * MONUMENTS
BRONZE TABLETS * MARKERS
BECKER MEMORIALS
6033 Jackson Road
ANN ARBOR, MICHIGAN

1-517-522-8469
Findlay, eves., week-ends.
1-517-522-4816 17

PRODUCTION WORKERS—Plastic operation needs people to trim parts and work on vacuum warmers. No experience necessary. Autoform, Inc., 161 Enterprise Dr. Ph. 994-0150. x17

WANTED—Good home for AKC poodle. Black male, 17 months. \$30. Ph. 426-2168. x17

MAUSOLEUMS * MONUMENTS
BRONZE TABLETS * MARKERS
BECKER MEMORIALS
6033 Jackson Road
ANN ARBOR, MICHIGAN

1-517-522-8469
Findlay, eves., week-ends.
1-517-522-4816 17

PRODUCTION WORKERS—Plastic operation needs people to trim parts and work on vacuum warmers. No experience necessary. Autoform, Inc., 161 Enterprise Dr. Ph. 994-0150. x17

WANTED—Good home for AKC poodle. Black male, 17 months. \$30. Ph. 426-2168. x17

MAUSOLEUMS * MONUMENTS
BRONZE TABLETS * MARKERS
BECKER MEMORIALS
6033 Jackson Road
ANN ARBOR, MICHIGAN

1-517-522-8469
Findlay, eves., week-ends.
1-517-522-4816 17

PRODUCTION WORKERS—Plastic operation needs people to trim parts and work on vacuum warmers. No experience necessary. Autoform, Inc., 161 Enterprise Dr. Ph. 994-0150. x17

WANTED—Good home for AKC poodle. Black male, 17 months. \$30. Ph. 426-2168. x17

MAUSOLEUMS * MONUMENTS
BRONZE TABLETS * MARKERS
BECKER MEMORIALS
6033 Jackson Road
ANN ARBOR, MICHIGAN

1-517-522-8469
Findlay, eves., week-ends.
1-517-522-4816 17

WANT ADS

FOR SALE—1972 Oldsmobile Cutlass station wagon. Good running condition. New tires, new exhaust system, power steering and brakes, air conditioning. Ph. 475-7232. x17

CAMPER SHELL—For Chevy Lum or other small pickup. \$100. Ph. 426-3732. x17

MOVIE CAMERA—Super 8, lamps, projector, screen, \$125 or best offer. Also misc. items. Ph. (313) 878-3208. x17

FOR SALE—Squash: butternut, acorn, Hubbard. Ph. 475-7232. x17

MOVING, FOR SALE—G.E. portable Pot-Scrubber dish washer, under warranty, 5 mo. old. \$225. Ph. 475-8008. x16

SIGNS
—FOR SALE
—EXIT
—NO SMOKING
—FOR RENT
—KEEP OUT
—NO HUNTING
—NO SWIMMING

The Chelsea Standard
300 N. Main St.
Chelsea, 475-1371 404f

Believe It or Not!
The price of a Season Ticket to all 6 Kiwanis Travelogues in the 1978-79 series is
ONLY \$8.00!
Ph. 475-2045 19

Complete Body Shop Service
FREE ESTIMATES
Contact Ralph Machesky
Faist - Sprague Buick - Olds, Inc.
475-8664 x514f

Fireplace Builder
Artistic stone mason, block and brick mason, tuck pointing.
FREE ESTIMATES
Call 475-8025 after 3 p.m.
Patrick Grammatico x404f

GRASS LAKE
JUST OUTSIDE, 2-bedroom bungalow, oil fired boiler, carpeting, curtains and drapes, aluminum s/s, att'd, garage, nice lot. Mrs. Sturgill, 522-8594.

LARGE 2-STORY 3 or 4 bedrooms, new bath, carpeting, gas utilities, storms or thermo windows.

NEW 3-BEDROOM rancher featuring bath and a half, carpeting, plaster, walk-out basement, patio, gas utilities, thermo windows, fully insulated, family room and more.

Southside Realty
1-517-522-8469
Findlay, eves., week-ends.
1-517-522-4816 17

PRODUCTION WORKERS—Plastic operation needs people to trim parts and work on vacuum warmers. No experience necessary. Autoform, Inc., 161 Enterprise Dr. Ph. 994-0150. x17

WANTED—Good home for AKC poodle. Black male, 17 months. \$30. Ph. 426-2168. x17

MAUSOLEUMS * MONUMENTS
BRONZE TABLETS * MARKERS
BECKER MEMORIALS
6033 Jackson Road
ANN ARBOR, MICHIGAN

1-517-522-8469
Findlay, eves., week-ends.
1-517-522-4816 17

PRODUCTION WORKERS—Plastic operation needs people to trim parts and work on vacuum warmers. No experience necessary. Autoform, Inc., 161 Enterprise Dr. Ph. 994-0150. x17

WANTED—Good home for AKC poodle. Black male, 17 months. \$30. Ph. 426-2168. x17

MAUSOLEUMS * MONUMENTS
BRONZE TABLETS * MARKERS
BECKER MEMORIALS
6033 Jackson Road
ANN ARBOR, MICHIGAN

1-517-522-8469
Findlay, eves., week-ends.
1-517-522-4816 17

PRODUCTION WORKERS—Plastic operation needs people to trim parts and work on vacuum warmers. No experience necessary. Autoform, Inc., 161 Enterprise Dr. Ph. 994-0150. x17

WANTED—Good home for AKC poodle. Black male, 17 months. \$30. Ph. 426-2168. x17

MAUSOLEUMS * MONUMENTS
BRONZE TABLETS * MARKERS
BECKER MEMORIALS
6033 Jackson Road
ANN ARBOR, MICHIGAN

1-517-522-8469
Findlay, eves., week-ends.
1-517-522-4816 17

PRODUCTION WORKERS—Plastic operation needs people to trim parts and work on vacuum warmers. No experience necessary. Autoform, Inc., 161 Enterprise Dr. Ph. 994-0150. x17

WANTED—Good home for AKC poodle. Black male, 17 months. \$30. Ph. 426-2168. x17

MAUSOLEUMS * MONUMENTS
BRONZE TABLETS * MARKERS
BECKER MEMORIALS
6033 Jackson Road
ANN ARBOR, MICHIGAN

1-517-522-8469
Findlay, eves., week-ends.
1-517-522-4816 17

PRODUCTION WORKERS—Plastic operation needs people to trim parts and work on vacuum warmers. No experience necessary. Autoform, Inc., 161 Enterprise Dr. Ph. 994-0150. x17

WANTED—Good home for AKC poodle. Black male, 17 months. \$30. Ph. 426-2168. x17

MAUSOLEUMS * MONUMENTS
BRONZE TABLETS * MARKERS
BECKER MEMORIALS
6033 Jackson Road
ANN ARBOR, MICHIGAN

1-517-522-8469
Findlay, eves., week-ends.
1-517-522-4816 17

PRODUCTION WORKERS—Plastic operation needs people to trim parts and work on vacuum warmers. No experience necessary. Autoform, Inc., 161 Enterprise Dr. Ph. 994-0150. x17

WANT ADS

RELIABLE PROFESSIONAL COUPLE looking for apt. or small house to rent in Dexter area. References available. Ph. 1-483-6042. x17

RUMMAGE SALE—Friday, Oct. 20, 8:30-3, Dexter United Methodist church, 3411 Central. Clothing, books, toys, household goods. After 1, \$1 per bag. x17

FOR SALE—Antique round oak table. Ph. 426-3440. x17

A Family Affair
The kids will profit by the 6 great news Shows in the coming Travel Series. So will you! Season Ticket: **ONLY \$8.00!**
Ph. 475-2045 19

Pierson & Riemenschneider 475-9101

NEW LISTING—4-bedroom home in town. Convenient to schools and stores. Extra large lot plus 2-car garage. \$54,900.

IDEAL LOCATION—Just outside of town with a lovely 1.6-acre hilltop view. 3-bedroom brick ranch featuring hardwood floors, finished walk-out family room, fireplace and 2 1/2-car garage. \$72,900.

TERRIFIC BUY—Newly decorated 3-bedroom home in the heart of town. Fully carpeted, plus first floor laundry. Only \$44,900.

STATE LAND is just across the road from this 3-bedroom ranch on 7.4 acres. Special features include a stand of mature pines, new 3-car garage and finished rec. room. Value priced at \$72,900.

BUILDING SITE—3 wooded lots overlooking Sugar Loaf Lake. Just \$7,900.

Pierson & Riemenschneider REALTORS
111 Park St. • 475-9101

EYES:
Patrick Merkel 475-1824
John Pierson 475-3064
Marilyn Chastain 475-2934
Dai Queenan 475-1819
Jeane Riemenschneider 475-1469
Norma Kern 475-8132 x17f

MOVING—Trailerload miscellaneous items. Bathroom vents, new tires and wheels, paneling, van seats and many more items. Saturday, Oct. 7, 9-5 only. 7080 Dexter Ann Arbor Rd., Dexter. For information call Astro Manufacturing Co., 428-2140. x17

McCulloch Portable Generators Chain Saws
WE SELL, SERVICE, SHARPEN AND TRADE.
Chelsea Hardware 211f

ANTIQUE SALE—2nd anniversary, up to 50% off on most merchandise. Oct. 3-8, 10 a.m. to 5 p.m. daily. The Antique Gallery, 5235 Jackson Rd., Ann Arbor. Ph. 663-5055. x17

Floor Covering Is Our Business
TILE—SOLARIAN—HARDWOOD CARPET—INSTALLATION—REPAIRS
FREE ESTIMATES—475-8621

Merkel Home Furnishings 41f

IMMEDIATE OPENINGS
For northern Washtenaw and southern Livingston counties for single copy delivery of the Detroit Free Press. Good part-time work, dependable car needed, short early morning hours. Good pay. For more information ph. 455-0121 or 483-0090. x17

IRISH SETTER PUPS—AKC champion quality. All shots. Call 475-1579 after 5 p.m. x18

H.E.P. WANTED—Astro Manufacturing, 2055 N. Lima Center Rd. x18

SMALL HOUSE or apt. or mobile home to rent in Dexter or Chelsea area, reasonable. Ph. 517-596-2214 after 8 p.m. x17

3-FAMILY GARAGE SALE—Oct. 7, 8, 510 Arthur St., 9 to dark. Some furniture, clothes and many other household items. x17

WANTED—Housekeeper, companion for a 70-year-old elderly woman. No cleaning or nursing. Please write to Box No. OC-5, in care of The Chelsea Standard. x18

GARAGE SALE—Oct. 7, 8 to 5 p.m., 112 W. Summit St., Chelsea. Children's clothes, winter coats, bathroom fixtures, record players and misc. x17

1974 VOLVO 145 station wagon, \$3,400. Ph. 426-3792. x17

Tree Service
CUTTING DOWN or trimming.
Free Estimates.
Ph. Dave, 475-8165. x18

FOR SALE—1 large dresser, \$60; 2 stuffed chairs, \$5 each; Early American chair, \$10; reclining chair, \$25; love seat, \$10; 2 single beds, covered box springs; bar stools, \$10 each; electric stove, \$50; 4 chrome kitchen chairs, \$4 each. Ph. 475-9965. x18

BILL KNAPP'S
3501 S. State St., Ann Arbor
We have immediate openings, both full- and part-time, for the following positions:
—Cooks
—Waitresses
—Waiters
—Dishwashers
—Buspersons
No experience necessary. We offer good pay and benefits. Apply in person between 10-11 a.m. or 2-4 p.m.
An equal opportunity employer. x16

FARM EQUIPMENT for sale—Allis-Chalmers WD tractor, good condition; WD 2x14 mounted plow; WD 2-row cultivator; Oliver 2x14 pull-type plow, on rubber; John Deere 12-ft. springtooth drag. Call 994-0919 evenings and week-end. x15f

ATTIC INSULATION Class I
Cellulose Insulation installed by trained installers
FOAM WALL INSULATION
Highest thermal efficiency of any insulation type.
New and Existing Construction.
FOAM MASTERS
Complete insulation contractor
Licensed and Insured.
475-1625
Free Estimates x311f

— YOUNG —
We list and sell lake, country and town properties. Eugene Young, Real Estate & Builder, 878-3792, 11596 Dexter-Pinckney Rd., Pinckney 48169. x341f

PIANO TUNING and repair. Qualified technician. Call Ron Harris, 475-7134. x10f

Automotive Rust Proofing Cars and Trucks
Village Motor Sales, Inc.
CHRYSLER—DODGE PLYMOUTH—DODGE TRUCKS
Phone 475-8661
1185 Manchester Rd., Chelsea
Hours: 8 a.m. to 5:30 p.m.
Tues. thru Fri. Until 8 Monday
9 a.m. to 12 noon Saturday 211f

BARN, STORAGE SHEDS, and garages. 2-story barns as kits or installed. Very reasonable. Ph. 227-5100. x17

WANTED—Winter storage for tent trailer. Ph. 475-1478. x17

FOR RENT—1-bedroom trailer, \$100 per month plus damage deposit. U-park-it. Ph. 475-9096. x17

FOR SALE—Hay. Ph. 475-7769. x501f

CASH FOR LAND CONTRACTS
Any type of real estate throughout Michigan. No commissions or closing costs. Free. 1-800-293-1560

WANT ADS

WANTED—Housekeeper, companion for a 70-year-old elderly woman. No cleaning or nursing. Please write to Box No. OC-5, in care of The Chelsea Standard. x18

GARAGE SALE—Oct. 7, 8 to 5 p.m., 112 W. Summit St., Chelsea. Children's clothes, winter coats, bathroom fixtures, record players and misc. x17

1974 VOLVO 145 station wagon, \$3,400. Ph. 426-3792. x17

Tree Service
CUTTING DOWN or trimming.
Free Estimates.
Ph. Dave, 475-8165. x18

FOR SALE—1 large dresser, \$60; 2 stuffed chairs, \$5 each; Early American chair, \$10; reclining chair, \$25; love seat, \$10; 2 single beds, covered box springs; bar stools, \$10 each; electric stove, \$50; 4 chrome kitchen chairs, \$4 each. Ph. 475-9965. x18

BILL KNAPP'S
3501 S. State St., Ann Arbor
We have immediate openings, both full- and part-time, for the following positions:
—Cooks
—Waitresses
—Waiters
—Dishwashers
—Buspersons
No experience necessary. We offer good pay and benefits. Apply in person between 10-11 a.m. or 2-4 p.m.
An equal opportunity employer. x16

FARM EQUIPMENT for sale—Allis-Chalmers WD tractor, good condition; WD 2x14 mounted plow; WD 2-row cultivator; Oliver 2x14 pull-type plow, on rubber; John Deere 12-ft. springtooth drag. Call 994-0919 evenings and week-end. x15f

ATTIC INSULATION Class I
Cellulose Insulation installed by trained installers
FOAM WALL INSULATION
Highest thermal efficiency of any insulation type.
New and Existing Construction.
FOAM MASTERS
Complete insulation contractor
Licensed and Insured.
475-1625
Free Estimates x311f

— YOUNG —
We list and sell lake, country and town properties. Eugene Young, Real Estate & Builder, 878-3792, 11596 Dexter-Pinckney Rd., Pinckney 48169. x341f

PIANO TUNING and repair. Qualified technician. Call Ron Harris, 475-7134. x10f

Automotive Rust Proofing Cars and Trucks
Village Motor Sales, Inc.
CHRYSLER—DODGE PLYMOUTH—DODGE TRUCKS
Phone 475-8661
1185 Manchester Rd., Chelsea
Hours: 8 a.m. to 5:30 p.m.
Tues. thru Fri. Until 8 Monday
9 a.m. to 12 noon Saturday 211f

BARN, STORAGE SHEDS, and garages. 2-story barns as kits or installed. Very reasonable. Ph. 227-5100. x17

WANTED—Winter storage for tent trailer. Ph. 475-1478. x17

FOR RENT—1-bedroom trailer, \$100 per month plus damage deposit. U-park-it. Ph. 475-9096. x17

FOR SALE—Hay. Ph. 475-7769. x501f

CASH FOR LAND CONTRACTS
Any type of real estate throughout Michigan. No commissions or closing costs. Free. 1-800-293-1560

WANTED—Housekeeper, companion for a 70-year-old elderly woman. No cleaning or nursing. Please write to Box No. OC-5, in care of The Chelsea Standard. x18

GARAGE SALE—Oct. 7, 8 to 5 p.m., 112 W. Summit St., Chelsea. Children's clothes, winter coats, bathroom fixtures, record players and misc. x17

1974 VOLVO 145 station wagon, \$3,400. Ph. 426-3792. x17

Tree Service
CUTTING DOWN or trimming.
Free Estimates.
Ph. Dave, 475-8165. x18

FOR SALE—1 large dresser, \$60; 2 stuffed chairs, \$5 each; Early American chair, \$10; reclining chair, \$25; love seat, \$10; 2 single beds, covered box springs; bar stools, \$10 each; electric stove, \$50; 4 chrome kitchen chairs, \$4 each. Ph. 475-9965. x18

BILL KNAPP'S
3501 S. State St., Ann Arbor
We have immediate openings, both full- and part-time, for the following positions:
—Cooks
—Waitresses
—Waiters
—Dishwashers
—Buspersons
No experience necessary. We offer good pay and benefits. Apply in person between 10-11 a.m. or 2-4 p.m.<

LITTLE WANT ADS! BIG PLUSES FOR BIG RESULTS!

JUST PHONE
475-1371

WANT ADS

PATCHING and PLASTERING
Call 475-7489. x31f

DUTCH BULBS

JUST ARRIVED
For Fall Planting
TULIPS — HYACINTHS
DAFFODILS — CROCUS

Chelsea Hardware
110 S. Main Pm. 475-1121 x17f

ACTIVITIES DIRECTOR and volunteer coordinator for small, rural, located nursing home. Experience preferred. Full-time position available. Please send resume to 406 W. Main St., Stockbridge 40285 or Ph. (517) 851-7700 between 9:30 a.m. and 5 p.m. weekdays. x16

PIANO OR HARP Lessons — Experienced teacher. Master of music from U. of M. Your home or mine. Ph. 475-1680. x17

Window Screens Repaired

Reasonable rates.

Chelsea Hardware
110 S. Main Ph. 475-1121 x31f

CAR & TRUCK LEASING — For details see Lyle Chriswell at Palmer Motor Sales, 475-1301. x49f

Custom Built Homes

O-h! We Remodel too

U-can count on us

N-o Job Too Small

T-rim Inside and Out

R-ough-in Only If

Y-ou Want to Finish

S-iding Aluminum, 5" Gutters

I-mmediate Attention

D-ALÉ COOK & CO.

E-stimates, Free

BUILDERS

Please Call

475-9153

DALE COOK

FOR RENT — Fair Service Center for meetings, parties, wedding receptions, etc. Weekdays or weekends. Contact John Wellnitz, phone 475-1518. x31f

Purchasing

Screw Machine Division in Chelsea, Mich., has career opportunity position. Typing necessary. Top wages and benefits. Send resume to Director of Personnel

Federal Screw Works

3401 Martin Ave.

Detroit, Mich. 48210 x17

HELP WANTED — Mature woman for sales and stock work. Apply person at Dancer's, Chelsea. 17
OR LONGER wear keep carpets clean with Blue Lustre. Rent electric shampooer, \$2. Chelsea Hardware. x17

WANT ADS

WANTED TO RENT — Lake-front home with option to buy. Ph. 434-3835 between 6 and 9 p.m. 20
ANYONE KNOWING the whereabouts of Dick Machnik please reply to box number SE-27, care of The Chelsea Standard. x18
LIVE BAND MUSIC for weddings, parties, banquets, etc. Ph. 475-1811. x43f

NO HUNTING SIGNS

Now Available

at

The Chelsea Standard

FOR SALE

HEAVILY WOODED 10.05 acres, located just minutes from Chelsea. Ideal building site. Beautiful land. \$19,500. Call John Green 665-0300 or 663-4963, evenings.

Caldwell & Reinhart Co.

2452 E. Stadium
Ann Arbor 48104 x17f

Year-After-Year

The best in the business at your doorstep — in the Kiwanis Travel Series. 6 Admission tickets: ONLY \$9.00! Ph. 475-2045 x19

APPLICATORS NEEDED — 10 roofing foremen needed immediately. 72-year-old company offering good insurance plan and exceptional profit sharing. Year-round work. We furnish all equipment except hand tools. Call 313-426-4879 or stop at 7300 W. Huron River Dr. between 7 and 9 a.m. Sherriff-Goslin Co., 7300 W. Huron River Dr., Dexter. x52f

Energy Control

Insulation, Inc.

3921 Varsity Dr., Ann Arbor

Tired of high heating cost?

Save 40%

Rapco-Foam over 35 years and more than 2 1/2 million homes insulated.

UL Approved. Guaranteed for life of structure. Quality—Only trained and licensed installers. Noise Reduction by 70-80%. Anti-Rodent. Anti-Insect. Moisture Resistant. Non-Allergic. Rapco-Foam tested by 40 independent agencies.

For more information

Call Jerry

Days 973-2245

Evenings 475-1818 x47f

FOR SALE — 1973 Baron, 12'x65' house trailer, completely furnished, in Chelsea. \$6,500. Ph. 475-7284. x19

FOUND — Boy's jacket, hat and sweater on Freer Rd. Ph. 475-9261 to identify. x17

WANT ADS

GARAGE SALE — Oct. 7, 9 to 11. 2 Danish chairs, 1 chifforobe, 1 chest of drawers, 1 dress form. 19135 North Territorial Rd. Ph. 475-1420. x17

BABYSITTER NEEDED in my home from 2 to 6 p.m. Must have own transportation. Ph. 475-7584. x17
FOR SALE — Girl's bike, 20", \$25. RCA TV, 25", \$25. Ph. 475-7584 after 4 p.m. x17

PERSON WANTED to pick up and deliver clothes 3 mornings a week. Apply in person to Chelsea Cleaners, 113 Park St. x17

GARAGE SALE — Oct. 7 and 8. 7555 Werkner Rd. 9 to 5. Bar and 4 stools, colonial rug, pictures and misc. from 2 families. x17
FREE — Scrap lumber, good for kindling. You haul. Ph. 475-2488. x17

Cooper's Coming

Big Don himself with a hilarious film in the coming Travel Series. ONLY \$9.00!

A Season Ticket! Be There! Ph. 475-2045 x19

ROOFING, siding, gutters, storm windows and doors. For a free estimate, phone 428-7104. Service Roofing Co., Manchester, Mich. x48f

ENGRAVING BUSINESS FOR SALE — \$4,500 with 1976 new Hermes Super 6TX machine, 9 sets of type, metal cutter, desks, entire stock including trophies and parts, plaques, charms, etc. Ph. 662-3380. x38f

FOR SALE — 1972 VW van, excellent cond., new radials, 47,000 miles, no rust. Ph. 662-5730 days, or 878-6820 eves. x17f

DEMO

78 CORDOBA, 318, auto., p.s., p.b., air, stereo. SAVE

78 DODGE D-150 Utility pick-up, 360, auto., p.s., p.b. stereo, chrome wheels, RWL tires SAVE

78 SAPPORO 2600 cc, auto., p.s., AM-FM, cruise control. SAVE

Driver Training Car

78 ASPEN SE 4-dr., 225, auto., p.s., p.b., air, 60-40 seat. SAVE

Used Trucks

78 DODGE W-300 dump truck, 4-wheel drive, V-8, 4-speed, p.s., p.b., Galeon 3 1/2-yd. box, 4-ton hoist, anti-spin, Diamond RLL snow plow, 5343 miles. \$9995

76 DODGE D-200 Club Cab, V-8, auto., p.s., p.b. \$2995

74 FORD Ranchero, 351, auto., p.s., p.b. \$2295

71 FORD 1/2-ton, V-8, auto., p.s. \$595

Quality Used Cars

75 DART Custom 4-dr., 6-cyl., auto., p.s., low mileage. \$2795

75 DODGE B-200 Sportsman, 109" wheelbase, 318, auto., p.s., p.b. \$1995

74 VW Dasher station wagon, 4-speed, Michelin tires, one owner. \$1995

74 CHEVY Impala 4-dr., V-8, auto., p.s., p.b., air. \$1895

72 FORD LTD 4-dr., auto., p.s., p.b., air. \$595

72 CADILLAC sedan deVillie, full power, air cond. \$1695

Village

Motor Sales, Inc.

CHRYSLER - DODGE

PLYMOUTH - DODGE TRUCKS

Phone 475-9661

1185 Manchester Rd., Chelsea

Hours: 8 a.m. to 5:30 p.m.

Tues. thru Fri. Until 8 Monday

Saturday 9 to 12 x17f

FOR SALE

BEAUTIFUL 3-BEDROOM ranch on a lovely wooded lot, just reduced by \$4,000. Accepting any reasonable offer. Land contract terms. In the Half Moon Lake area. Call John Green, 665-0300 or 663-4983. x17f

Caldwell & Reinhart Realtors

WANT ADS

KITCHEN HELP WANTED — Experience helpful. Apply Chelsea Methodist Home, 805 W. Middle St., Chelsea. Ph. 475-2695. x17
CAMPER FOR SALE — Fits 1/2-ton pickup. \$550. Vincent Merkel, 7590 Jackson Rd., Ann Arbor. Ph. 878-6382. x52f

Due to Demand on our Staff

from Increased

Market Penetration

we must add

SALES

ASSOCIATES

in

Ann Arbor and Chelsea

Robert H.

THORNTON

Jr. P.C.

971-2840 475-9193

FOR RENT — 1-bedroom apartment, partly furnished, in attractive country setting. Rent \$150 plus utilities. Couple preferred. No pets. References required. Write Box SE-21, care of Chelsea Standard, Chelsea. x17

Chelsea Plumbing & Heating

Reasonable Rates

GAIL SHEARS

Licensed Journeyman

GARLAND DE VOE

Licensed Master

Ph. 475-1037 x17f

Have You Been Thinking of Selling?

Then call us about

Listings at 3 1/2 %

or don't complain about high

real estate commissions.

HOUSE, barn, and 16 acres all for only \$88,900. The house is a 5-year-old ranch with four bedrooms, three on the first floor and one on the lower level. The lower level is perfect for a finished rec. room and allows you to stroll out to the back yard. The barn has four stalls for accommodating your horses as well as boarding. The 16 acres are fenced and afford pasture.

HOUSE AND 1 ACRE for only \$67,900. The house is a 9-year-old aluminum-sided ranch with a 2 1/2-car garage. The floor plan is excellent with three bedrooms, 1 1/2 baths, and country kitchen all on the first floor. An unfinished basement with a fireplace, laundry area and a utility in the lower level.

CALL

Gallatin Realty Co.

427 N. Main, Ann Arbor

Ph. 994-1202 x17f

REAL ESTATE

CHELSEA AREA

COUNTRY LIVING—On one acre. 4 miles west of Chelsea. 6-yr-old 3-bedroom ranch, 1 1/2 baths, spacious country kitchen opens to patio. 2 1/2-car garage, full basement with nearly finished rec. room w/Franklin stove. New insulation, low fuel bills, low maintenance, mature trees, quiet neighborhood. Chelsea schools. Easy I-94 access. \$59,900.

Blanchard & Associates, Inc.

Office 769-9492

EVES: Virginia Blanchard 475-2521
Pat Seale 495-2032
Phil Conlin 429-2978
Mike Poulin 663-4241
Dave Blanchard 971-3419 x10f

GIANT MOVING SALE — Must see to believe it. Starts Oct. 5 till everything is gone. 14288 Old US-12, Chelsea. x18

CALL OR STOP IN

CHELSEA GLASS, INC.

WORKMANSHIP AND MATERIALS FULLY GUARANTEED

Open Daily 8 a.m. to 5 p.m.; Sat. 8 a.m. to 1 p.m.

140 W. Middle, Chelsea Phone (313) 475-4667

WE REPAIR AND REPLACE:

★ STORE FRONTS ★ MIRRORS

★ FURNITURE TOPS ★ PATIO DOORS

★ SHOWER DOORS ★ TUB ENCLOSURES

★ THERMOPANES ★ AUTO GLASS — Including Windshields

Free Pick-up and delivery on auto work.

Storm Door & Window Reglazing & Screens

COMMERCIAL BUILDINGS OR RESIDENTIAL

PROMPT SERVICE REASONABLE PRICES

WANT ADS

GARAGE SALE — Oct. 7, 10-5, 339 Madison St. x17

THORNTON

475-9193

LOTS TO OFFER! Secluded 3-bedroom ranch with frontage on 3 sides of private lake. Plus, small 4-room tenant house — great for year-around income! Situated on 32 acres of natural beauty. A great buy! Chelsea schools.

NEW HOME — Just \$59,500! Plenty of room for your family. Country kitchen, 3 bedrooms, 2 full baths. Your choice of carpeting. Full basement. Quiet location on 2-plus acres. Chelsea schools. \$59,500.

BELIEVE IT! This older farm-house could be just what you've been looking for! 1,900 sq. ft. of living area, 4 bedrooms. Study, 1st floor laundry. New well. On 1 acre with lots of trees and large barn. \$52,900.

BUILDING SITES

SECLUDED & WOODED parcel with access to Joslin Lake. Beautiful view. Great for your summer cottage. \$16,500.

BUILD YOUR NEW HOME on this 2-plus acre site in quiet country area. Already perked. Topsoil stripped and ready to dig base-line. Chelsea schools. \$13,500.

BUY ONE OR BOTH of these 2-acre parcels with gorgeous autumn view. Chelsea schools. \$12,500 each.

ROBERT H.

THORNTON

Jr., P.C.

REALTOR

EVENINGS: Barb Rybak 475-8498
Lang Ramsay 475-8138
Mark McKernan 475-8424
Helen Lancaster 475-1188
George Knickerbocker 475-2648
Chuck Walters 475-2308 x17f

MOVING, FOR SALE — G.E. portable Pot-Scrubber dish washer, under warranty, 5 mo. old. \$225. Ph. 475-9669. x17

FOR SALE — RCA black and white television, works good. \$65. Ph. 475-9934 or 475-7513. x10

TELLER — We have an opening for a full-time teller in our new Chelsea office. Experience preferred, salary commensurate with experience. Advancement possibilities. Excellent fringe benefits offered. Call 994-5555, ext. 206 for interview. Ann Arbor Trust Co., 100 S. Main St., Ann Arbor. An equal opportunity employer. x17

SIGN (TRAILER TYPE), 4'x8', lighted, 300 changeable letters and numbers. For sale — \$35.00 per month. Call (517) 593-2372. x17

WANT ADS

HELP WANTED — Nurse aides. Experienced nurse aides needed for private duty cases in Chelsea area. Excellent wages. All shifts available. For more information call Upjohn HealthCare Services, Ph. 761-2285. x17

CASH PAID FOR TIMBER — Perry E. Kendall, Jr., buyer of standing timber and veneer. 18520 W. Brady, Oakley, Mich. Ph. (517) 681-2631. x17

WATERLOO REALTY

PATTERSON LAKE ACCESS on county-maintained road. 2-bedroom summer home. Franklin fireplace for cool autumn evenings. New plumbing. 2 1/2 lots with tall trees. \$27,000. Land contract with \$5,000 down.

LAKE AND RESORT AREA — Vacant party store and attached 3-bedroom home. Good potential in populated location. Waterloo Recreation Area. On leased land with good lease terms. \$37,000.

ON 40 ACRES RECREATION LAND — 3-bedroom older home with much remodeling done. Well insulated and economical to heat. New kitchen, new bath, fireplace, deep well with 4" casing, new drainfield. Waterloo Recreation Area. \$75,000. 6% land contract with \$21,750 down.

1.5 ACRES, lots of trees, per acre problem, 218 ft. frontage on blacktop road, 3 miles west of Grass Lake. \$6,000. Land contract possible with \$1,500 down.

10 ACRES, surveyed, slight roll, (pretty green-alfalfa) a few trees. Blacktop road. Area of nice homes. Stockbridge-Munith schools. 20 min. from Chelsea. \$15,000.

WATERLOO REALTY

355 Clear Lake

JOANN WARYWODA, BROKER

Phone 475-8674

Evenings and Sundays: Sue Lewie 1-517-522-5252
Carol Lakatos 475-7129
Evelyn White 475-1066 x17f

NOTICE

SHIRLEY WHITAKER is now taking appointments at the HAIR AFFAIR in Stockbridge.

Call 851-7787

For An Appointment

LARGE multi-family yard sale. Some antiques, household goods, clothing, numerous other items. Saturday, Oct. 7, 8 to 5. 150 Cavanaugh Lake (Chelsea) behind store. x17

WANT ADS

COOK, waiter and waitress positions open. No experience necessary. Ph. 475-2020 for appointment. x17

BABYSITTER NEEDED — Monday through Friday, 7 a.m. to 4:30 p.m. in my home. For twin boys. Ph. 475-2549. x17

HOUSEKEEPER WANTED, one day a week. North of Chelsea. Inquire evenings. Ph. 475-1439. x18

YARD SALE — Oct. 6, 7, 764 S. Main St., Chelsea. 10 a.m. to 5 p.m. Handmade comforters, carpet carrier, some furniture, much odds and ends. x17

IMMEDIATE OCCUPANCY — Beautiful new 4-bedroom home on 2 1/2 acres in Dexter. Ann Arbor area. Fireplace, formal dining room, large kitchen, 2 1/2 baths, 2-car attached garage. Other choice building sites available (2 1/2-10 acres); will build to suit your plans or ours. Call Lodi Construction, 429-4105, or after 5, 429-4853. x19

FOR SALE — 1953 Pontiac, straight 8, good condition, radio, actual mileage 61,000. Auto. trans. Ph. 475-2605 after 6 p.m. x17

1970 FORD WINDOW VAN — 6-cylinder, automatic, \$695; Winchester 12-gauge automatic, \$125; very heavy large vise, \$55. Ph. 475-7714 after 6 p.m. x17

DRY CLEAN your carpets with HOST and save. Faster, easier than shampooing. Rent the machine. Merkel Home Furnishings, Chelsea, 475-8621. x17

HELP WANTED — Stock handling and utility work. Learn the home furnishings business. Merkel Home Furnishings. 475-8621. x1

BOWLING**Unknowns League**

Standings as of Sept. 27

Jynx	33	9
Miller High-Life	22	20
G & L's	20	22
Lucky Strikers	18	24
K & Four C's	17	25
Streakers	16	26
425 and over series: L. Lukas, 473; T. Sanderson, 427; J. Sweet, 450; B. Cobb, 434.		
140 and over games: L. Lukas, 180, 158; K. Buss, 149; M. Adams, 157; C. Risner, 146, 142; T. Sanderson, 162; V. Connell, 156; J. Sweet, 160, 144, 146; L. Proctor, 149; D. Roberts, 144; B. Cobb, 146, 156.		

Senior House League

Standings as of Oct. 2

Schneider's Grocery	26	2
McCalla Feeds	24	4
Freeman Machine	22	6
Krank Grohs Chevrolet	17	11
K. of C.	17	11
Captains Table	16	12
S. J. Custom	16	12
C & J Body	15	13
VFW	14	14
Village Motors	13	15
Wall's Barber Shop	14	14
Steele's Heating	16	12
Kilbreath Trucking	12	16
Washenaw Engineering	9	19
Bauer Builders	9	19
Central Fibre	8	20
Chelsea Lumber	4	24
Deansburro	2	26
600 series: F. Modrzewski, 624.		
525 and over series: B. Moss, 528; J. Schwerin, 547; B. Ervin, 597; B. Stacey, 541; A. Peterson, 535; A. Fleischmann, 528; G. Packard, 531; J. Harook, 541; W. Beeman, 573; W. Westphal, 570; P. Kelly, 572; B. Faron, 533; D. Pasquantonio, 527; G. Burnett, 531; L. Keezer, 593; D. Schleede, 542.		
210 and over games: L. Keezer, 223, 211; W. Beeman, 254; P. Kelly, 211; F. Modrzewski, 268; G. Packard, 223; J. Schwerin, 222.		

Chelsea Suburban

Standings as of Sept. 27

Dancer's	15	5
Dairy Queen	13	7
Log Cabin Restaurant	13	7
Ricardo's	12	8
Dana De-Lites	11	9
Chelsea State Bank	10	10
Chelsea Pharmacy	9 1/2	10 1/2
Mark IV Lounge	8 1/2	11 1/2
State Farm	8	12
Awards & Specialties	7	13
Chelsea Assoc. Builders	7	13
Frisinger Realty	5	15
150 games and over: C. Stoffer, 207; N. Packard, 170, 178, 175; S. Bowen, 173, 150, 162; B. Murphy, 162, 170; E. Harmon, 154, 167, 155; M. Vassas, 159, 178; L. Cobb, 164, 165; P. Harook, 180; J. Burnett, 178, 170; B. Beeman, 150, 170; D. McAllister, 163, 165; E. Clark, 163, 185; D. Keezer, 151, 152; B. Loucks, 155, 185; C. Peterson, 177; M. De La Toore, 153, 171; A. Hocking, 160; S. Schulz, 150; S. Nicola, 155; P. Sobar, 152; A. Foytik, 179; E. Figg, 150; D. Keezer, 153; G. Baczynski, 172, 151; P. Schaff, 170; T. Monroe, 168, 153.		
450 series and over: N. Packard, 523; S. Bowen, 480; B. Murphy, 476; E. Harmon, 478; M. Vassas, 479; L. Cobb, 474; P. Harook, 470; J. Burnett, 468; B. Beeman, 476; D. McAllister, 467; E. Clark, 454; M. De La Toore, 465.		

SERVING SANDWICHESfrom 11:00 a.m. till 2:00 a.m. Mon. thru Sat.
Open Sunday 12:00 Noon Till 11 p.m.

BEER & WINE CARRY-OUT FOOD CARRY-OUT

MARK IV LOUNGE

1180 M-52 Phone 475-1951 Chelsea

WANTED

Need couples or teams for Mixed League bowling every other Sunday, 5:45 p.m. shift and 8:00 p.m. shift; also for Friday on 6:50 p.m. shift or 9:00 p.m. shift.

Need Women Bowlers
on CWBC League
at 9:00 p.m. Wednesdays
5 women per team

CHELSEA LANES, Inc.

1180 M-52 Ph. 475-8141

Junior House Girls

Standings as of Sept. 28

Wolverine Lounge	15 1/2	4
Manchester Car Wash	16	5
W. C. Klep	13	7
Coolman Parking	11	9
Cliff's Ace Hardware	11	9
Kozy Kitchen	9	7
Team No. 4	8	12
Chelsea Lanes	6	14
Drake's	6	10
K & W Equipment	2 1/2	17 1/2
425 and over series: P. Elliott, 492; M. L. Wollpert, 436; B. Van Deven, 432; J. Duvall, 433.		
140 and over games: A. Kensler, 144; V. Wurster, 141; K. Stautz, 145, 145; R. McEwan, 140; L. Rogers, 147; L. A. Preston, 144; K. Currey, 183; P. Huffman, 141, 141; P. Elliott, 167, 160; P. Devilder, 140, 141; M. L. Wollpert, 145, 154; J. Cyers, 144; M. A. Mulcare, 144, 143; K. Roberts, 146; O. Harbin, 140; M. Gardner, 146; L. A. Van Deven, 166; B. Van Deven, 164, 156; J. Duvall, 179; T. Hatch, 144; J. Armstrong, 200; J. Granger, 143.		

Nite Owl League

Standings as of Oct. 2

Thompson Pizza	26	9
Nu Yu Boutique	24	11
Fitzsimmons	21	14
Hanco Sports Center	21	14
Chelsea Automotive	21	14
Norm's Body Shop	20	15
Parts Peddler	19	16
H & R Farms	17	18
A. D. Mayer	16	19
K. of C.	16	19
HRWS Farms	15	20
Cavanaugh Lake Store	13	22
Chelsea Lions Club	10	25
Team No. 14	6	29
500 series: P. Brown, 518; J. Renz, 537; S. Stock, 530; M. Bristle, 511; W. Brown, 502; D. Eder, 544.		
Over 200 games: P. Brown, 201; J. Renz, 208; S. Stock, 210; W. Brown, 202.		

Rolling Pin League

Standings as of Oct. 3

Poachers	15	5
Egg Beaters	15	5
Dish Washers	15	5
Spooners	13	7
Sugar Bowls	12 1/2	7 1/2
Grinders	12	8
Blenders	12	8
Mixers	10	10
Coffee Cups	10	10
Moppper Uppers	10	10
Jelly Rollers	9 1/2	10 1/2
Brooms	9	11
Kitchen Kapers	9	11
Beaters	7	13
Silverware	7	13
Jolly Mops	6	14
Kookie Cutters	5	15
Pots	5	15
600 series and over: J. Shepherd, 513.		
425 series and over: R. Musbach, 488; P. Smith, 433; E. Heller, 455; E. Gibb, 469; D. Klink, 466; G. Clark, 449; E. Whitaker, 463; B. Wolfgang, 482; A. Boote, 431; K. Hamel, 485; S. Parker, 465; F. Andrews, 489; J. Edick, 450; D. Spalding, 455; P. Harook, 480.		
150 games and over: M. Wojcik, 153; R. Musbach, 171, 189; P. Wurster, 154; P. Smith, 162; C. Williams, 153; H. Ringe, 162; E. Heller, 155, 151; S. VanNatter, 158; B. Worsham, 154; E. Gibb, 178; D. Klink, 164, 158; G. Clark, 180, 152; E. Whitaker, 179; B. Wolfgang, 155, 178; W. Jackson, 156; B. Torrice, 153; A. Boote, 176; K. Hamel, 169, 177; V. Blanchard, 150; S. Parker, 174, 166; R. Cook,		

Junior Swingers

Standings as of Sept. 30

Chelsea Golf-Offs	4	0
Team 12	4	0
Chompin' Beavers	3	1
Pin Wizards	3	1
Super Strikers	3	1
Doobie Brothers	3	1
Gala Oil Co.	3	1
Team 11	3	1
Team 13	3	1
Team 5	3	1
Hangovers	0	4
Team 14	0	4
Girls high game, 150 and over: D. Steinaway, 170; D. Alexander, 161, 151; M. Alexander, 163; M. Northrop, 158; S. Messner, 151, 150.		

Girls high series, 425 and over: D. Steinaway, 447; D. Alexander, 443; M. Northrop, 426; M. Alexander, 425.

Boys high game, 170 and over: S. Stoddard, 190, 171; M. Steinaway, 186; D. Beaver, 178; S. Wilson, 177; A. Fletcher, 176; S. Wilson, 175; D. Boyer, 175.

Boys high series, 475 and over: A. Fletcher, 483; S. Stoddard, 481.

Chelsea Lanes Mixed

Standings as of Sept. 29

Hav-A-Electric	25	3
VFW	19	9
Hawley Truck Repair	18	10
Ken's Glass	17	11
Fox Point Flashes	16	12
Ann Arbor Centerless	15	13
Fireballs	12	16
King Pins	12	16
White Lightning	11	17
Federal Screw Outlaws	10	18
Accra Gauge	10	18
Wire & Fire	10	18
The Neighbors	9	19
Michigan Mutual	5	23
Women, 425 series and over: J. Jose, 472; S. Wohlgemuth, 434; N. Keezer, 537; D. Hawley, 439; D. Oesterle, 447.		
Men, 475 series and over: R. Clark, 586; L. Keezer, 515; R. Pieske, 515; F. White, 558; R. Zatorski, 569; A. Sannes, 483.		
Women, 150 games and over: J. Jose, 182, 158; H. Fox, 154; S. Wohlgemuth, 153; N. Keezer, 176, 173; 188; C. Hepburn, 174; D. Hawley, 165; D. Oesterle, 185.		
Men, 175 games and over: R. Clark, 188, 187, 211; E. Keezer, 180; L. Keezer, 186; R. Pieske, 190; F. White, 223; R. Zatorski, 208, 209; A. Sannes, 187.		

Women's Bowling Club

Standings as of Sept. 27

Chelsea Milling	14	2
Parish Cleaners	13	3
Washenaw Engineering	12	4
Heller Electric	10	6
Jiffy Mixes	9	7
Freeman Machine	9	7
Norris Electric	8 1/2	7 1/2
Palmer Leasing	8	8
Helen Fox's	7 1/2	8 1/2
Palmer Ford	6 1/2	9 1/2
Laura's Beauty Salon	6 1/2	9 1/2
DD Deburring	6	10
Wolverine Bar	5	11
Klink Excavating	4 1/2	11 1/2
Alley Cats	4	12
Good Time Girls	4	12
500 series and over: P. Fitzsimmons, 538; J. Hafner, 512.		
450 series and over: C. Bradbury, 491; N. Kern, 488; K. Powers, 480; N. Packard, 479; R. Hummel, 474; P. Wurster, 473; C. Thompson, 470; J. Norris, 468; L. Orlovski, 461; F. Andrews, 459; D. Alber, 453; J. Rowe, 453; D. Fouty, 453; L. Hafner, 452; B. Bush, 450.		
150 games and over: P. Fitzsimmons, 164, 205, 169; J. Hafner, 157, 166, 189; C. Bradbury, 191, 169; N. Kern, 172, 169; K. Powers, 188; N. Packard, 214; R. Hummel, 159, 163, 152; P. Wurster, 191; C. Thompson, 173, 152; J. Norris, 158, 170; L. Orlovski, 159, 160; F. Andrews, 177, 158; D. Alber, 167; J. Rowe, 155, 152; D. Fouty, 172; L. Hafner, 157, 158; B. Bush, 191; B. Fike, 151, 164; J. Pagliarini, 153, 164; A. Fahrner, 188; M. E. Sutter, 183; D. Verwey, 181; A. Bham, 178; C. Steinaway, 172; A. Sindlinger, 169; J. Collins, 184.		

School Officers Association Elects Officers

Washenaw County School Officers Association Board of Directors elected new officers at their annual meeting Sept. 21. Elected president was Ann Cleary Kettles.

The Association is made up of representatives from each of the school boards in Washenaw county, Washenaw Community College Board of Trustees; vice-president, John Sanderson, Lincoln Consolidated School Board; and secretary-treasurer, Judith Van Amburg, Whitmore Lake School Board.

Plans for the coming year include legislative breakfasts co-hosted by the school officers and superintendents of the county. This is a continuation of a successful program from previous years.

It is the hope of the WCSOA that this group may be used as a common ground for the purpose of becoming aware and sharing problems and concerns of each of these educational units.

Bulldog Mixed League

Standings as of Sept. 28

Smith's Service	15	5
Richardson Asphalt	12	8
D. D. Deburring	11	9
Norm's Sales	11	9
Spadafors's	9	11
Dotie-O-Dairy	9	11
Joe's Bar & Grill	7	13
Goofers	6	14
Women, 150 and over: R. Alexander, 163; C. Able, 153, 159; B. Jackson, 152; M. George, 155; W. Bush, 195, 178, 214.		
Men, 170 and over games: B. Van Riper, 176; T. Stafford, 188, 189; B. Jackson, 182, 182; B. Smith, 176, 203; L. Nix, 170; D. George, 172; G. Burkhardt, 179.		

Week of Oct. 9-13

Monday—Spaghetti with cheese, buttered mixed beans, bread and butter, apple dessert, milk.

Tuesday—Taco Tumbles, soup of the day, crackers, dish of fruit, cookie, milk.

Wednesday—Beef and gravy over mashed potatoes, buttered vegetable, bread and butter, chocolate asialar, milk.

Thursday—Pizza slice, buttered corn, half peanut butter sandwich, peach cobbler, milk.

Friday—Submarine sandwich with sauce, tossed salad, potato chips, cherry cake, milk.

KEN OSBORNE INSULATION CONTRACTOR

- ★ Blown in side walls and attic.
- ★ R = 4.17 per inch.
- ★ Resists fire and moisture.
- ★ Lightweight.
- ★ Meets Federal Specification HH-1-515.
- ★ This insulation made from 100% wood fibers.

KEEP COOL & SAVE FUEL. DON'T WAIT TOO LONG. IT'LL COST MORE LATER.

35 years in the building and insulation business in this area.

FREE ESTIMATES.

KEN OSBORNE

Ph. (517) 851-7497

ALUMINUM STORM WINDOWS AND DOORS

School Officers Association Elects Officers

Washenaw County School Officers Association Board of Directors elected new officers at their annual meeting Sept. 21. Elected president was Ann Cleary Kettles.

The Association is made up of representatives from each of the school boards in Washenaw county, Washenaw Community College Board of Trustees; vice-president, John Sanderson, Lincoln Consolidated School Board; and secretary-treasurer, Judith Van Amburg, Whitmore Lake School Board.

Plans for the coming year include legislative breakfasts co-hosted by the school officers and superintendents of the county. This is a continuation of a successful program from previous years.

It is the hope of the WCSOA that this group may be used as a common ground for the purpose of becoming aware and sharing problems and concerns of each of these educational units.

Bulldog Mixed League

Standings as of Sept. 28

Smith's Service	15	5
Richardson Asphalt	12	8
D. D. Deburring	11	9
Norm's Sales	11	9
Spadafors's	9	11
Dotie-O-Dairy	9	11
Joe's Bar & Grill	7	13
Goofers	6	14
Women, 150 and over: R. Alexander, 163; C. Able, 153, 159; B. Jackson, 152; M. George, 155; W. Bush, 195, 178, 214.		
Men, 170 and over games: B. Van Riper, 176; T. Stafford, 188, 189; B. Jackson, 182, 182; B. Smith, 176, 203; L. Nix, 170; D. George, 172; G. Burkhardt, 179.		

Week of Oct. 9-13

Monday—Spaghetti with cheese, buttered mixed beans, bread and butter, apple dessert, milk.

Tuesday—Taco Tumbles, soup of the day, crackers, dish of fruit, cookie, milk.

Wednesday—Beef and gravy over mashed potatoes, buttered vegetable, bread and butter, chocolate asialar, milk.

Thursday—Pizza slice, buttered corn, half peanut butter sandwich, peach cobbler, milk.

Friday—Submarine sandwich with sauce, tossed salad, potato chips, cherry cake, milk.

KEN OSBORNE INSULATION CONTRACTOR

- ★ Blown in side walls and attic.
- ★ R = 4.17 per inch.
- ★ Resists fire and moisture.
- ★ Lightweight.
- ★ Meets Federal Specification HH-1-515.
- ★ This insulation made from 100% wood fibers.

KEEP COOL & SAVE FUEL. DON'T WAIT TOO LONG. IT'LL COST MORE LATER.

35 years in the building and insulation business in this area.

FREE ESTIMATES.

KEN OSBORNE

Ph. (517) 851-7497

ALUMINUM STORM WINDOWS AND DOORS

Guidebook Makes Air Travel Easier for Handicapped Persons

Veterans Administration wants to remind the handicapped and elderly veterans about a guidebook, published by the Federal Aviation Administration, making air travel easier and more convenient.

The publication entitled "Access Travel: Airports" lists design features, facilities and services that meet the travel needs of the wheelchair, the blind, the deaf and the aged at 220 airport terminals in 27 countries.

The 20-page guide identifies 69 items important to the aged and handicapped veterans and others. The list includes reserved parking, ramps, accessible restrooms, elevator controls with raised lettering, telephones with amplifiers, and special transportation.

This helpful booklet is available at no cost at the Washenaw County Veterans Affairs Office, 4123 Washenaw, Ann Arbor. Stop by and pick one up or call 971-8600 and one will be sent to you.

FEDERAL SPENDING

The Agriculture Department reports in a study of spending in fiscal 1976 that per capita spending in metropolitan areas was \$1,553 compared with spending of \$1,271 in rural areas.

Most of the metropolitan-rural differences were due to higher defense and space programs in metropolitan areas.

The report also showed that federal spending per person was highest in Western states and lowest in North Central states.

The South per capita level was second and the Northeastern states third.

McCalla Feed Service

Phone 475-8153

12875 Old US-12 E.

Chelsea

WAYNE DOG FOOD
WAYNE CAT FOOD
WATER SOFTENER SALT
BIRD FEEDS
SUNFLOWER SEEDS
HORSE FEEDS
RABBIT FEED

Bird Houses - Dog Houses

You Are Invited
to
FALL FESTIVAL '78
CLINTON, MICH.

OCT. 6-7-8
All Day Long All Three Days

Arts and crafts, lost arts, apple festival, rodeo, free entertainment, pork roast, beer tent, auction, fireworks, street dance, chicken barbecue.

GRAND PARADE SUNDAY AT 2:30 p.m.

For further information call (517) 456-7542

Thinking CARPET?
Think SCHNEIDER'S

Visit the wonderful world of carpeting at Schneider's, one of the area's finest, full-service carpet stores, conveniently located in West Ann Arbor on Wagner Road between Jackson and Liberty.

Schneider's carries a broad selection of quality, name-brand carpets at prices consistently among the lowest in the entire area. Try us.

662-9332 OPEN MON & FRI NIGHTS TIL

Firefighters To Join In Display of Skills

Putting their best boots forward, firefighters from 23 area fire departments will kick-off Fire Prevention Week (Oct. 8-15) by demonstrating a variety of practical as well as thrilling demonstrations in simulated fire emergencies.

On Saturday, Oct. 7 (Oct. 14 if it rains) more than 200 firefighters will join their skills at the Meijer Thirty Acres parking lot, 3825 Carpenter Rd., Ypsilanti, from 11:30 a.m. to 6 p.m. for a continuous display of fire-fighting techniques.

Volunteers from the Chelsea and Dexter fire departments will be there, kindling audience curiosity and, in some cases, their participation.

Chelsea, for example, will bring its own 1860 antique fire wagon and invites the audience to join the bucket brigade in extinguishing a live fire. They will do this at 12:20, 3:05, and 5:15 on Saturday afternoon.

Dexter plans two demonstrations, one with their "jaws of life" and one with the K-12 rescue saw. Cutting off the top of an automobile with the powerful K-12 saw will be conducted at 11:30 a.m. while the monstrous jaws will come to life as a wrecked car is pried open and a man rescued from the inside at 1:50.

Other demonstrations will show the audience how to extinguish

small home fires with a fire extinguisher, how to wrap a burning person with blankets, and how over-loaded electrical wiring can cause fires.

Firefighters will also leap 20 feet down into a life net, repel from a 100-foot tower down a rope in less than five seconds, climb up the side of a 35-foot ladder and down the other side as the ladder stands upright and supported by only two ropes, can quell several car fires.

The public is invited to this second annual Washtenaw County Mutual Aid Fire Safety Day where the Northfield township and Augusta township fire departments will have a booster line out for anyone to squirt water from and get the feel of the pressure.

Pinckney Area Youth Assigned as Missile Repairman in Germany

Spec. 4 William D. Guidot, son of Mr. and Mrs. Alexander J. Guidot, 1124 Camelot Dr., Pinckney, recently was assigned as a missile repairman with the 78th Maintenance Battalion in Nurnberg, Germany.

Guidot entered the Army in November 1974.

The specialist is a 1974 graduate of Pinckney High school.

Colorful Fall Season In Store for Michigan

A battle that never made the history books, a festival honoring long Johns, a chicken race, and gorgeous autumn scenery provide a kaleidoscope of things to do this October in Michigan, according to the Travel Bureau, Michigan Department of Commerce.

The Civil War returns to Michigan as the fictitious Battle of Cedar Ridge is staged by a troupe of 300 blue and gray garbed performers during the Four Flags Apple Festival in Niles, Oct. 5-8. You may try your hand at the questionable art of seed popping and enjoy hot coffee and fresh apple pie in the apple tent.

Anyone not wearing red in Cedar Springs on Oct. 7 may run the risk of arrest by the Keystone Cops during the town's Red Flannel Day. It all started back in the winter of '36 when a New York feature writer bemoaned the fact that there were no red flannel Johns available for insulation against the cold winter. The Cedar Springs newspaper replied that their town's stores were well supplied even if Saks Fifth Avenue was not, and Cedar Springs was on the map. Three years later the town set aside a special day to honor the "drop seated" undergarments and the tradition has continued through the years.

Red flannel weather is not too far off, but before it arrives you're invited to attend Michigan's annual autumnal spectacular. Some choice seats for the show are aboard the motor ship Beaver Island for a color cruise on Lake Charlevoix. Cruise dates are Oct. 7-8 and 14 from Charlevoix, and you must make reservations. If you prefer to go by land and "captain" your own automobile, guided Color Tours of Gladwin county are scheduled for Oct. 14-15 from Gladwin. Many areas of the state will have marked color tour routes.

Greenfield Village recreates the way the crop was harvested in days gone by, and the good times that went with it, during Autumn Harvest Week-end, Oct. 6-8, while the Fall Festival in Clinton features crafts from yesteryear, Oct.

6-8. Ethnic food booths, arts, crafts and two parades perk up the Festival of the Forks in Albion, Oct. 7, and Bellaire heralds the fall colors at its Autumn Festival with Paul Bunyon Days lumber demonstrations and contests.

Another way to enjoy the autumn air is at the Oktoberfest in Big Rapids, Oct. 1. The festival comes complete with Gorman bands, dancing, and German food, beer and wine.

The Coldwater Historic House Tour, Oct. 15, offers a smorgasbord of 19th Century architecture, enhanced with stained glass windows, stately staircases and impressive woodwork. In conjunction with the tour, the Antique Car Club will provide a shuttle service for those desiring to travel from house to house in vintage style.

Behind the footlights, Kevin McCarthy portrays our 33rd president in "Give 'Em Hell, Harry" at Michigan State University Oct. 3, and America's Goodwill Ambassador, Pearl Bailey, speaks at Whitling Auditorium in Flint, Oct. 17. Center for the Arts, Midland, presents "Sound of Music" Oct. 20-22 and 26-28; and the Music Hall, Detroit will swell with the melodies of "Showboat," Oct. 27-29 and 31.

The oldest classical ballet company in America graces the stage of Detroit's Music Hall Oct. 18-22. The highlight of this engagement of the San Francisco Ballet will be its full-length presentation of "Romeo and Juliet." The Fisher Theatre in Detroit continues to raise the curtain on its production of "The Grand Tour," Oct. 1-19; and the Henry Ford Museum in Dearborn presents the 1929 mystery farce, "Spooks," Oct. 13-14, 20-21, 27-28, and on into November.

Ringling Brothers-Barnum & Bailey Circus comes to Detroit's Cobo Arena for 12 spectacular performances of "The Greatest Show on Earth" Oct. 10-15.

Some "fine feathered friends" will be the center of attraction at the Fowl Festival in Plymouth, Oct. 1. Area businessmen sponsor chicken to see whose entry can fly the farthest distance down Main St.

It's a big month for antique shows. A few "where and when's" for antiquers are the County Center Building, Kalamazoo, Oct. 5-8, Lansing Civic Center, Oct. 6-8; National Guard Armory in Jackson, Oct. 20-22, Artillery Armory in Oak Park, Oct. 20-22; and Lansing's Civic Center will host a Craft and Hobby Show, Oct. 26-28.

Michigan has a colorful lineup of things to do for fun this fall. For more information write for your free copy of the Michigan Calendar of Travel Events from the Travel Bureau, Michigan Department of Commerce, P.O. Box 30226, Lansing 48909.

The first women's labor organization in a trade established in 1825 was the United Tailoresses Society of New York. Later that year, this organization conducted the first strike by a women's labor organization, according to a Labor Department publication, "Labor Firsts in America."

LEGISLATIVE LOG

An Overview of Action on Bills In the Michigan Legislature Week of Sept. 25-29

Winning Final Approval Other Legislative Action

The legislature's final week of the 1978 fall session was a busy one during which a number of controversial issues were considered and resolved. Topping the list of touchy topics tackled was the \$169.5 million transportation funding package. Approved and sent to the Governor for his signature were two transportation funding bills, one of which raises the state's gasoline and diesel fuel tax by two cents, effective Jan. 1, and another which increases license plate fees, effective with the purchase of 1979 plates, as well as several other technical bills contained in the package.

Also winning final legislative approval this week was a compromise \$521 million Medicaid funding bill for the upcoming 1978-79 fiscal year. The bill had been vetoed by the Governor earlier this year due to his objections to a provision placing a limit on the amount of funds which could be used for welfare abortions. Under the compromise measure, that limitation is still included, but is written in such a way that the Governor may veto only that provision without jeopardizing funding for all other Medicaid services. Lawmakers intend to deal separately, before the end of the year, with the issue of whether welfare abortions should be paid for at taxpayers' expense.

In addition, this week saw the final stamp of approval given to the lobbyist disclosure bill. Aimed at guaranteeing the public the right to know how much is being spent by lobbyists to influence the outcome of legislation, the measure requires lobbyists to register with the state and report their expenditures twice annually.

Other major measures winging their way to the Governor for his signature, as a result of having won final legislative approval this week, will: increase from 48 to 54 percent the retail markup on the sale of hard liquor; appropriate funds for higher education grants and various capital outlay (building) projects across the state; exempt certain air and water pollution devices from the use tax; and implement the public health code.

Although the bulk of the lawmakers' time was spent putting the finishing touches on the controversial measures detailed above, a number of other bills won approval in their house of origin. Passed by the Senate, and sent to the House for its review, were bills legalizing the possession of gas-ejecting devices for self-defense purposes, and requiring mobile homes to be titled. Meanwhile, the House passed, and sent to the Senate for its consideration, bills to: bail the state's Game and Fish Protection Fund out of its financial difficulties; establish year-around vehicle registration system; and set up new requirements for the licensing, design, and inspection of solid-waste landfills throughout Michigan. Members of each alternate chamber will be examining these bills when the Legislature returns November 14th for its end-of-year session.

From the Governor . . .

Governor Milliken signed several bills into law this week, including the controversial county sheriffs' funding measure. The new law provides a formula for allocating some \$8.7 million to county sheriffs' departments across the state, based upon population and road mileage, to beef up their law enforcement activities.

Among the other major measures signed into law by the Governor this week was a bill establishing a youth employment clearinghouse to receive and evaluate information regarding job programs for young people in Michigan. In addition, he signed several more of a series of bills aimed at making various state boards and commissions open to the public.

In other executive office news this week, the Governor received from the State Department of Public Health a preliminary report on the effect of PBB on the general population, and announced that he will appoint a special ballot proposal implementation commission to resolve any problems which might arise as a result of voter approval of more than one of the tax-related ballot proposals.

Pioneer Day Slated At Farm Museum

In celebration of the autumn's harvest, the Waterloo Area Farm Museum invites you to take a trip in their time machine to the late 1800's this Sunday, Oct. 8 from 10 to 5 p.m.

Sunday is Pioneer Day when volunteers from the Waterloo Historical Society recreate the lifestyles of 19th century farm families.

Demonstrations in sheep shearing, weaving, butter churning, lace making, and whittling are featured along with wagon rides and a Civil War encampment manned by the 1st Michigan Regiment. Also on the grounds is the Farm

Museum, the only one of its kind in Michigan. 10 rooms are furnished and dressed to show how people from the period of 1855 to 1895 lived.

Just north of the museum is the Dewey school, a one-room country school.

Admission to the grounds and parking is free. A small charge covers a guided tour of the museum and Dewey school, and home-baked goods, produce, dried flowers, cider and doughnuts will be on sale.

Waterloo Area Farm Museum is located at 9998 Waterloo-Munith Rd., in Jackson county.

Saturday, Oct. 7 thru Oct. 10 GRAND OPENING

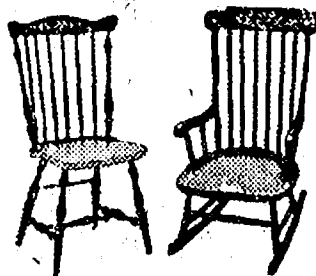
FURNITURE STRIPPING SERVICE

By The Work Savers

Wood - Metal - Fibers

WITH THIS ADV. STRAIGHT BACK CHAIRS

Varnished \$5.00
Fainted \$8.00



VIC GAUTHIER

12100 TRINKLE RD., DEXTER PH. 475-9291

JANET COOLEY May help you save!

Looking for value in insurance for your home, your car, your health, your business, your life?

Your money can't buy better protection. Call me.

ALLSTATE

You're in good hands.
Allstate Life Insurance Co.
Allstate Insurance Companies
Northbrook, Ill.

See or phone
JANET COOLEY
552 W. Middle St., Chelsea
Ph. 475-9095

REGISTRATION NOTICE

FOR

GENERAL ELECTION Tuesday, Nov. 7, 1978

To the Qualified Electors of the TOWNSHIP OF DEXTER (Precinct No. 1)

COUNTY OF WASHTENAW, STATE OF MICHIGAN

Notice is hereby given that in conformity with the "Michigan Election Law," I, the undersigned Clerk, will, upon any day, except Sunday and a legal holiday, the day of any regular or special election or primary election, receive for registration the name of any legal voter in said Township, City or Village not already registered who may APPLY TO ME PERSONALLY for such registration.

Notice Is Hereby Given that I will be at my home, 13890 Island Lake Road, any day from 8:00 a.m. to 5:00 p.m. by appointment, phone 475-7271.

Notice Is Hereby Given That I Will Be at My Home, 13890 Island Lake Road,

Monday, October 10, 1978 - Last Day

From 8 o'clock a.m. until 8 o'clock p.m.

THE 30th DAY PRECEDING SAID ELECTION

And on Saturday, October 7, 1978 - 8 a.m. to 5 p.m.

As provided by Section 498, Act No. 116, Public Acts of 1954 As Amended.

For the purpose of REVIEWING the REGISTRATION and REGISTERING such of the qualified electors in said TOWNSHIP, CITY or VILLAGE as SHALL PROPERLY apply therefor.

The name of no person but an ACTUAL RESIDENT of the precinct at the time of registration, and entitled under the Constitution, if remaining such resident, to vote at the next election, shall be entered in the registration book.

William Eisenbeiser, Township Clerk

1978 DRESS-A-DOLL CONTEST

Enter Now!

You can become a part of a warmer Christmas for little girls who need cheer and love by entering our Dress-A-Doll Contest now.

We provide the doll and you design and sew an outfit for it. Costumes will be judged and then displayed in our lobbies in December. At Christmas time each doll becomes a gift for some less fortunate girl in the community. And you make it happen.

Pick up your doll and rules at any participating GLFS office starting October 2nd. Dolls must be returned to all offices Thursday, November 9th.

Good Luck!

GRAND PRIZE: \$50

COSTUME CATEGORY	1st Prize	2nd Prize	Honorable Mention
Character	\$25	\$10	\$5
Fancy	\$25	\$10	\$5
Knit and Crochet	\$25	\$10	\$5
Nationality	\$25	\$10	\$5
Sensible	\$25	\$10	\$5
Sports	\$25	\$10	\$5
Age 15 and Under	\$25	\$10	\$5



1977 Grand Prize Winner - Sherie Bush

GREAT LAKES FEDERAL SAVINGS

Participating offices: Ann Arbor, Brighton, Chelsea, Dexter, Manchester, Saline, Ypsilanti
Member FSILC

ORGANIZED IN 1890



PLEASE DON'T SQUEEZE THE SOFTENER!

You'll be tempted to run up and hug this Crystalmatic Water Softener once you discover how much it improves problem water and that you can buy it for as little as \$239.95!

As Washtenaw County's Water Conditioning Specialist, we feature a complete line of attractive, durable and efficient Crystalmatic Water Softeners. Our FREE water analysis will tell you which model will most economically meet your needs.

Visit our convenient new showroom or call us today.

Phone 769-7665

crystal clear

Open
Mon-Fri
8 a.m. to 5:30 p.m.,
Sat
8 a.m. to 4 p.m.,

6043 Jackson Road, (¼ mile west of Zeeb)

BEEF HINDQUARTERS

\$1.29 lb.

AVG. WT. 150-170 LB.

8 pcs. SIRLOIN STEAK
12 pcs. T-BONE
6 pcs. PORTERHOUSE
6 pcs. ROUND STEAK
4 pcs. RUMP ROAST
4 SIRLOIN TIP STEAK
1 SIRLOIN TIP ROAST
6 lbs. STEW BEEF
30 lbs. HAMBURGER

After Processing \$1.70-\$1.75 lb.

DUNBAR'S DEXTER FOOD LOCKERS

Paul Dunbar, Owner 8063 Main St., Dexter

Ph. 426-8466

Leader Want Ads Get Quick, Economical Results!

REGISTRATION NOTICE

FOR

GENERAL ELECTION Tuesday, Nov. 7, 1978

To the Qualified Electors of the TOWNSHIP OF LIMA (PRECINCT NO. 1)

COUNTY OF WASHTENAW, STATE OF MICHIGAN

Notice is hereby given that in conformity with the "Michigan Election Law," I, the undersigned Clerk, will, upon any day, except Sunday and a legal holiday, the day of any regular or special election or primary election, receive for registration the name of any legal voter in said Township not already registered who may APPLY TO ME PERSONALLY for such registration.

Notice Is Hereby Given that I will be at my home, 10411 Chelsea-Dexter Road, By Appointment, from 8:00 a.m. to 5:00 p.m.

Notice Is Hereby Given That I Will Be at My Home, 10411 Chelsea-Dexter Road,

Monday, October 10, 1978 - Last Day

From 8 o'clock a.m. until 8 o'clock p.m.

THE 30th DAY PRECEDING SAID ELECTION

And on Saturday, October 7, 1978 - 8 a.m. to 5 p.m.

As provided by Section 498, Act No. 116, Public Acts of 1954 As Amended.

For the purpose of REVIEWING the REGISTRATION and REGISTERING such of the qualified electors in said TOWNSHIP, CITY or VILLAGE as SHALL PROPERLY apply therefor.

The name of no person but an ACTUAL RESIDENT of the precinct at the time of registration, and entitled under the Constitution, if remaining such resident, to vote at the next election, shall be entered in the registration book.

Arlene Bareis, Township Clerk

New Park Lyndon Facilities Dedicated

The sun shown brightly on the dedication of Park Lyndon's south unit, Sunday, Sept. 24 as Washtenaw County Parks and Recreation Commission (WCPARC) officials and park enthusiasts officially opened the second phase of the Park Lyndon development on North Territorial Rd.

Just recently the north unit was opened to the public for nature walks and has a large shelter, picnic tables, primitive toilets, and a fireplace.

The south side also has these

features plus a handsome log cabin which will be used for a meeting place in the event of bad weather and a center for naturalist-guided tours of the nature trails.

Genevieve Gillette was the featured speaker who gave a spirited reminiscence of how she was able to facilitate the purchase of the 200-acre park for \$1 from the Department of Natural Resources.

According to Miss Gillette, a barely readable clause in the DNR regulations stated that undeveloped land owned by the DNR could be leased on a long-term basis to counties willing to develop the land for recreational use.

Because she knew that the land Park Lyndon is situated on belonged to the DNR she approached the parks and recreation committee with her idea to utilize the clause and it agreed. Following the approval of the county board and the Road Commission in charge of parks then, they succeeded in obtaining the land.

WCPARC (which replaced the Road Commission's job of park management) obtained a \$125,000 grant from the Economic Development Administration to construct the nature trails, cabin, and other features which were recently completed.

For the remainder of October, guided nature walks will be given on Saturday and Sunday mornings. For more information on these free tours call the WCPARC office at 994-2575.

The Labor Department helps people find jobs, and sponsors training for those who need it.

We build special storage buildings.

Cuckler pre-engineered, all-steel buildings for storage on the farm, business and industry. Wide variety of types and sizes. Let us help you plan and build for your present and future needs.

Cuckler
AUTHORIZED BUILDER
DICK POLJAN
13875 MCKINLEY
CHELSEA, MICH.
PH. 475-2921

Tonight and Every Thursday
THE CAPTAINS TABLE
ROAST BEEF BUFFET



"Carved Before Your Eyes"
Serving from 4:30-9:30 p.m.

The Captains Table - 8093 Main St., Dexter

Tourist Association Offers Fall Color Tour Guide

Get ready for Southeast Michigan's Fall. Fantastic. All the blazing natural color of changing trees, picturesque countryside drives, old-time fall festivals and events combine to make this fall's line-up of things to see and do more exciting than ever.

Southeast Michigan Travel and Tourist Association makes it easy to get out and enjoy the exciting sights and sounds of fall travel in this close-to-home region with its autumn Color Tours guide and Fall-Winter Calendar of Events.

Twelve delightful tours throughout Southeast Michigan are offered in the Autumn Color Tour guide. Each tour brings together fine area attractions such as Greenfield Village, Meadow Brook Hall and Cranbrook with special seasonal places to visit such as roadside cider mill sites and antique auctions. All 12 tours make for a fun-filled family afternoon and are within a short drive of Metropolitan Detroit.

The many colorful fall festivals and activities scheduled throughout the nine-county area are described in SMTTA's Fall-Winter Calendar of Events. The brochure covers the period from September through March and includes events such as the annual Plymouth Fall Festival, Autumn Harvest Weekend at Greenfield Village, the Arts and Apples Festival in Rochester and Ann Arbor's monthly antiques market. Major sporting, theatre and cultural events are also listed.

For a free copy of both the Autumn Color Tours guide and the Fall-Winter Calendar of Events write: Southeast Michigan Travel & Tourist Association, American Center Building, Suite 350, 27777 Franklin Rd., Southfield 48034.

AA Community Singers To Begin Season Oct. 15

Ann Arbor Community Singers open their second season Sunday, Oct. 15, with an impromptu reading of J. S. Bach's "Jesu Meine Freude." Ernest Brandon of the Eastern Michigan University music faculty will conduct the group at the First United Methodist church, 120 S. State St., Ann Arbor, at 2 p.m. All who would enjoy singing or listening are welcome. Scores and refreshments will be provided. Donations to cover expenses are requested.

Upcoming programs include Mozart's "Requiem" (Feb. 4), J. S. Bach's "Christ Lag in Todesbanden" (March 18), and Hayden's "Lord Nelson Mass" (June 3). Anyone interested in participating as a soloist or conductor should contact one of the group's organizers, Elizabeth Margosches, 662-7338, or Nancy Karp, 434-4952.

At the time the Labor Department was created in 1913 the American worker lacked many of the basic protections taken for granted today. The average workweek was about 50 hours, and earnings averaged about 22 cents an hour, according to the U.S. Department of Labor publication.

Recount Puts Colburn In State Senate Race

A recount of the votes cast in the August Republican primary has reversed the outcome of that election, placing C. William Colburn in the running for the 18th State Senatorial District seat.

Colburn was declared the five-vote winner last week over challenger Ronald L. Trowbridge who had originally led Colburn by one vote. The final vote tally showed Colburn with 4,138 votes and Trowbridge with 4,133.

Following the announcement that he had won the Republican nomination, Colburn vowed to proceed immediately with an energetic campaign aimed at retaining Republican representation for the 18th Senatorial District.

Colburn acknowledged that the recount had set back the Republican effort to retain the office, but said he believes enough time remains to conduct a winning campaign.

"We may be delayed, but we're not defeated," he emphasized. "We're just going to have to condense what would have been a 12-week campaign into six weeks. I intend to work hard, and I'm convinced we'll be able to win in November."

Colburn, 38, is an associate professor of speech at the University of Michigan. He served as an Ann Arbor City Councilman and as mayor pro-tem.

Trowbridge said he intends to campaign on behalf of Colburn now that the recount has been completed.

"The State Board of Canvassers

has spoken and I'm willing to accept its decision," Trowbridge stated. "I know Bill Colburn is a competent and knowledgeable candidate who will be an effective spokesman for our district in the Michigan Senate. I want to see the 18th District remain Republican and I will do all I can to help Bill achieve this goal."

The 18th District is currently represented by Republican State Senator Gilbert Bursley of Ann Arbor who is retiring at year's end.

The U.S. Labor Department enforces laws that protect the safety and health, job and pension rights of workers.

Peggy Thornton Teaching in S. Carolina

Peggy Thornton is making her home in Pageland, S.C., where she is teaching 5th grade science. Peggy is the daughter of Mr. and Mrs. Walter Thornton of Second

St. She is a 1972 graduate of Dexter High School and received her teaching certificate from Central Michigan University at Mt. Pleasant.

Security lighting has always meant "Glad to be home?"

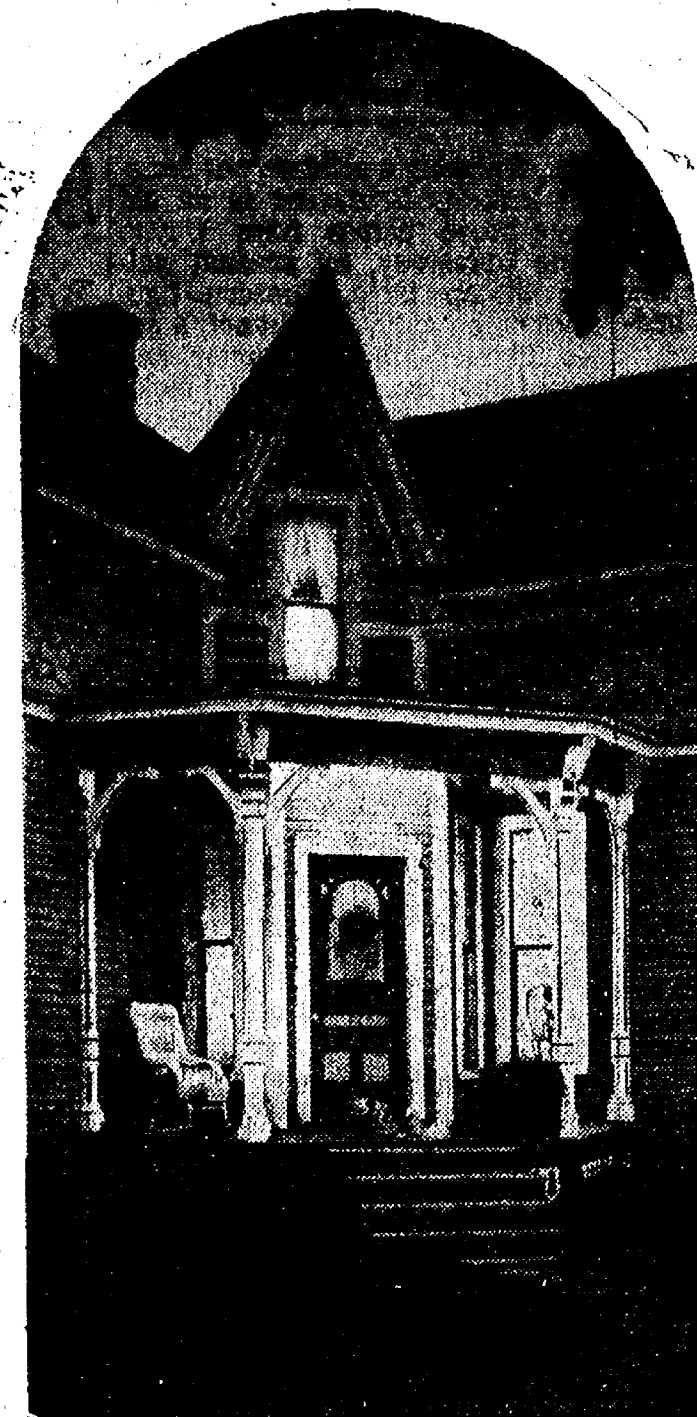
Seeing the lights on, waiting for you to arrive home after dark, has always been a welcome sight.

And when you're at home, lights can give you a feeling of security.

In the old days they didn't call it security lighting. But that's what it was. Because lights at night have always offered safety and protection.

Today you have a wide choice of security lighting. Including electric post lanterns for your front and back lawns that operate only from dusk til dawn. Floodlights to light your driveway and garage. And garden lights that not only protect, but add new dimensions to outdoor living.

Even the lights inside your home can be part of your security lighting system and, with automatic controls, can give your house a lived-in look when you're away.

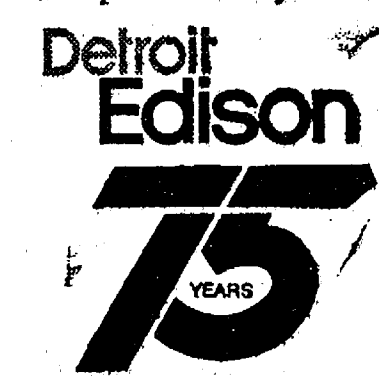


Security lighting costs less than you might think. Neither energy nor dollars are wasted when your system is automatically controlled with timers or photoelectric cells to go on only when needed.

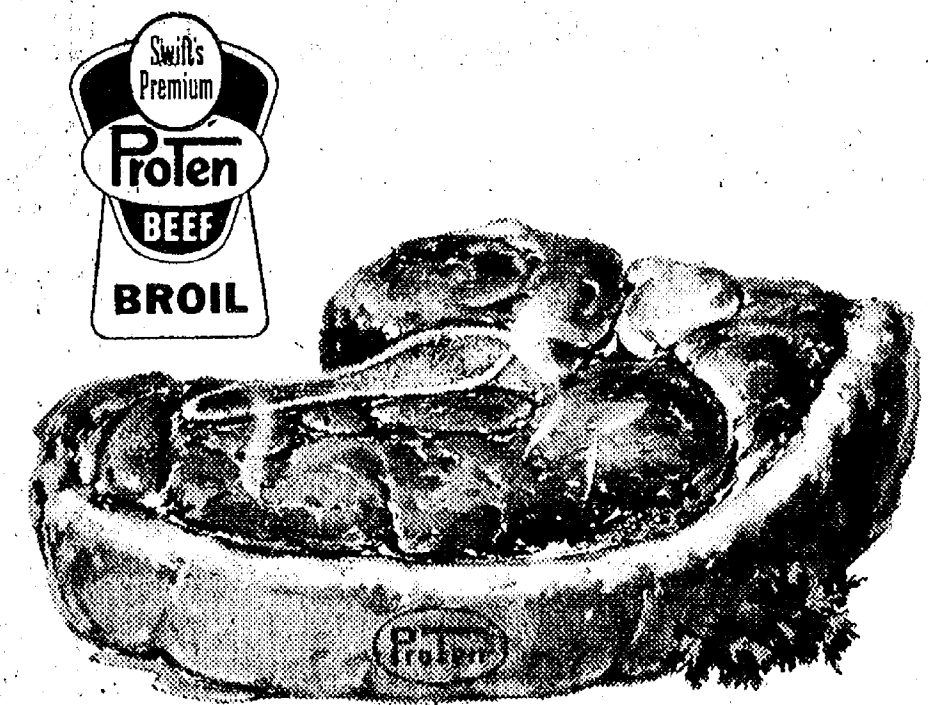
Detroit Edison can help you plan energy-efficient security lighting for your home or business. Call or stop in at any Detroit Edison Customer Office.

Security lighting. It's a bright idea that's come home.

Save where it really counts. The power is in your hands.



GRAND OPENING
OCT. 4 thru 7th



COUNTRY FARM MEATS
MAPLE AND MILLER
Ann Arbor
995-5885

GRAND OPENING DRAWING SAT., OCT. 7th
Come in and Register for FREE DRAWING at Miller-Maple Store, Ann Arbor

— FREE GIFTS —

4 CHOICE BEEF RIBS (30-35 Lb. Avg.)
SUNBEAM Covered Broiler FRY PAN
FAMOUS WEBER GRILL

Coupons for Drawing at Maple-Miller Store

— BEEF SALE —

SIRLOIN STEAKS lb. \$2.29	BONELESS RUMP ROAST . lb. \$1.89
RIB STEAKS lb. \$1.99	SIRLOIN TIP ROAST . . . lb. \$1.89
PORTERHOUSE & T-BONE lb. \$3.25	STANDING RIB ROAST . . lb. \$2.09
	BONELESS CHUCK ROAST lb. \$1.69

CHUCK STEAK . . lb. \$1.39	CHUCK ROAST . . lb. \$1.19	POT or ENGLISH CUT ROAST lb. \$1.69
--	--	---

WHOLE FRYERS FRESH, PLUMP 55¢ lb.	HEN TURKEYS FROZEN GRADE A 79¢ lb.	SMOKED PICNICS FARMER PEET'S 79¢ lb.	HOT DOGS FARMER PEET'S 1-Lb. Pkg. 99¢	BACON FARMER PEET'S 1-Lb. Pkg. \$1.49
---	--	--	---	---

ECKRICH HONEY LOAF - PEPPER LOAF HAM & CHEESE \$2.59 lb. BAR-B-Q LOAF	FRESH CUT LUNCH MEATS PICKLE & PIMENTO LOAF OLIVE LOAF \$1.39 lb. Macaroni & Cheese	OLD FASHIONED LOAF FOOTBALL \$1.89 lb. COOKED SALAMI	ALL-BEEF BOLOGNA All-Meat Bologna \$1.49 lb. Garlic Bologna
--	--	--	---

KNOCKWURST lb. \$1.69	GARLIC BOLOGNA lb. \$1.59	CORNED BEEF . . lb. \$1.49
-------------------------------------	---	--

Fall House Tour Slated in Manchester

On Sunday, Oct. 8, St. Mary's of Manchester, will host their annual house tour, featuring six area homes. There is a pleasant blend of old and new, contemporary and traditional; a mixture of various housing styles. Tickets may be obtained at Krauss Pharmacy in Manchester before Oct. 8 or on the tour Sunday, they may be purchased at St. Mary's. Maps are also available to all ticket holders. Refreshments will be served all afternoon in the church basement. The tour begins at 1 p.m. and closes at 5 p.m.

The first house visitors will tour is the residence of Mr. and Mrs. Gerald Bordine, a fairly new family to Manchester. They built their retirement home last winter and are still busy landscaping. This home is an excellent example of what is practical and yet still spacious for couples whose children are grown. It sits high on a hill overlooking the River Raisin and one of Mrs. Bordine's "musts" was to have a view of the river wherever possible. She has expressed her need for an easy-care-for-house with her love of fine things. The facade, facing City Rd., has a large expanse of granite fieldstone, quarried mostly from Hillsdale county, along with ingenious rock from Mrs. Bordine's teaching collection.

Drive to Granger St., around the corner, and enter this home from the rear, as it is here that we find a large all-purpose welcoming room.

The pullman kitchen along one wall with a long eating counter faces a free standing fireplace and lounging area. Here also is a large oak coffee table transformed at some time from a dining room table. Further on are two lovely bedrooms decorated in pastels. The Bordine's love of antiques, both in furniture and china is apparent, especially in the jewel-box like living room. Designed so that unused areas may be closed off in winter, this home has everything necessary for gracious living.

To illustrate what can be done with energy and imagination, we look to the home of Mr. and Mrs. Edward Barnard. With wallpaper, paint, hard work and faultless taste, they have created an oasis of colorful delight.

The living room is a combination of comfort and chic in a mixed decor of refinished antiques and newer upholstered pieces. The bedrooms for their young son and daughter are decorated with lively prints and bright colors designed to please the most discriminating children.

Turquoise and silver are blended in the master bedroom to provide a restful, but vivid retreat for the parents.

Red, blue and the dark rich color of stained wood predominate in the family room, a "surprise" area at the rear of the house. Leading to the garage is a hallway and from here is a delightful powder room done in black and white wallpaper with accent touches of jonquil yellow.

Outside, the Barnards have given a great deal of effort toward planning a patio and yard area, using many railroad ties to set off their attractive ranch home.

The third house on the tour is a unique farmhouse, remodeled and renovated over the years to create an unusual residence for Dr. and Mrs. Glenn Lehr. Because of a fire seven years ago, the original construction of the 1837 section of the home has been deliberately exposed to show the way pioneers built their homes.

Dr. and Mrs. Lehr have traveled world-wide and their home reflects extensive and varied memorabilia, collected from England, the Far East, South America, and Spain. They have many interesting paintings, some of an oriental whimsical nature and others of English genre. A lovely crystal collection graces the dining room, contrasting with a fanciful array of mugs in the living room. Family room has one long wall of glass and provides a backdrop for Mrs. Lehr's extensive arrangement of greenery. Between the barn beams on the ceiling is the same carpeting as is used on the floor. This creates a wonderful feeling of warmth and intimacy, as well as adding acoustic value to the room. Take note, too, of the lovely cocktail table made of burl wood.

One of the most luxurious features of the Lehr home is the sauna attached to the master bedroom.

Downstairs, we come to the game room looking over a patio and swimming pool. When this room was added on the stone foundation of the original section of the house was uncovered and left "as is" to become one of the walls of the game room, giving a rugged, permanent feeling to this area. Truly a fascinating home!

You might think it a picturesque farmhouse just driving by, but what a surprise upon further investigation! Mr. and Mrs. Roger Hardenbergh have adapted their circa 1865 residence to accommodate the needs of their handicapped son. From the oversized garage, built at the same level as the house, to the especially constructed bathroom, much thought and planning have been given to this project. The original L shaped house has been re-structured to an H shape. The Hardenberghs insisted on the faithful reproduction of both interior and exterior woodwork, so that now it is impossible to tell which is the old and which is the new.

Upon entering the foyer, we see the beginning of a vast collection of family heirlooms and purchased antiques, among them are old prints in antique frames, an English marble-topped chest, original Hitchcock chairs, ancient French chandelier, and a lovely 1820 clock. Moving on to a guest bedroom furnished with refinished cherry chests and charming spindle spool walnut bed on which is displayed a featherstitched folk-art quilt. It was completed by great grandma in 1882 who herself was 82 years young at the time. Also visible are the delicate hand-woven baskets from Columbia, South America, sent through the auspices of the Hardenbergh daughter who was in the Peace Corps. Please note the Godey's Ladies Prints and lovely Victorian sofa.

In the living room, the mood is set with a remembrance of things



SWIMMERS OF THE WEEK: Champions Sara Borders, left, and Shelley Springer have both qualified for this year's state meet in Grand Rapids through exceptional swimming times. Sara qualified in the 200-yard freestyle by swimming a 2:13.14 and then further lowered her own school record to 2:12.67. Sara also lowered her season's best time to 1:14.0 in the 100-yard butterfly. Senior and tri-

captain Shelley Springer lowered her school records, personal best times, and qualified for the state meet by swimming a 26.90 in the 50-yard freestyle and a 59.80 in the 100-yard freestyle. These two girls only serve as samples of this week's team as all of the swimmers deserve honors for the two team victories over previously undefeated Dundee and the large Class A Jackson High school.

Special Olympics Directors Meet for Fall Convention

From Friday, Sept. 29 to Sunday, Oct. 1, Nancy and Doug Cooper, Special Olympics directors, and Teresa Murphy attended the annual Special Olympics conference at Higgins Lake Outdoor Center.

Theresa was attending as the only student member on the State Special Olympics Board of Directors. Issues discussed were Winter and Summer Special Olympics Games. A calendar was given out for the year and funding for the games was gone over. Rule changes and fund raising were also discussed.

Volunteers are always needed to help in the Chelsea area. People interested should contact Nancy Cooper at 475-9131, ext. 49. The calendar for the year is as follows:

- Oct. 6-7—State Soccer Tournament at Ann Arbor.
- Oct. 21-22—5-state and Canada Soccer Tournament in Ann Arbor.
- Nov. 3—Area Wrestling Tournament, High Point.
- Nov. 4—State Wrestling, Macomb County.

The Krugers' two active sons have bedrooms upstairs and their rooms show more evidence of their mother's handwork in the knit bedspreads and appealing lion, macrame wall-hangings. The family room is downstairs, complete with fireplace, pool table and wet bar. Again the red theme enlivens the dramatic Spanish decor. Architecturally, this home is most exciting, and proves that no matter where we live, our home can be expanded changed, remodeled and recreated to be something different.

OIL-PROOF PLUS SUPPORT



(Mechanics, station attendants, machine shop operators—and tired feet and ankles. Full-grain leather, steel shank and "Sweat-Proof" flexible split leather insole provide total comfort. Try on a pair today.)

RED WING

**VOGEL'S
& FOSTER'S**

Ph. 475-1606 Chelsea, Mich.

A & W CHELSEA

1-94 and M-52

Special Every Tuesday
CONEY HOT DOGS
45c

Special
Every Wednesday
**FOOT LONG
HOT DOGS
and ROOT BEER**
\$1.00

Open 7 Days A Week

475-2055

Save Time - Call

Orders in Advance



Richard R. Risner Completes Navy Recruit Training at Great Lakes

Navy Seaman Recruit Richard R. Risner, son of Joe Purdy of 15810 Gorton Rd., Grass Lake, has completed recruit training at the Naval Training Center, Great Lakes, Ill.

During the eight-week training cycle, he studied general military subjects designed to prepare him for further academic and on-the-job training in one of the Navy's 35 basic occupational fields. Included in his studies were seamanship, close-order drill, Naval history and first aid. Personnel who complete this course of instruction are eligible for three hours of college credit in Physical Education and Hygiene. He joined the Navy in July 1978.

Legislation creating the Labor Department was signed by President William Howard Taft on his last day in office, March 4, 1913.

Grain Reserves of 759 Million Bushel

As of Sept. 15, there were approximately 759 million bushels of feed grains and wheat in the grain reserve. This amount includes nearly 237 million bushel of corn; 386 million bushels of wheat, plus varying amounts of barley, oats and grain sorghum.

★ AMISH MADE CABINETS ★ CABINETS BY CONTINENTAL ★ MERILLAT CABINETRY

SHOWROOM HOURS:

Monday thru Friday, 9 a.m. to 5 p.m.
Saturday, 9 a.m. to 2 p.m., or By Appointment

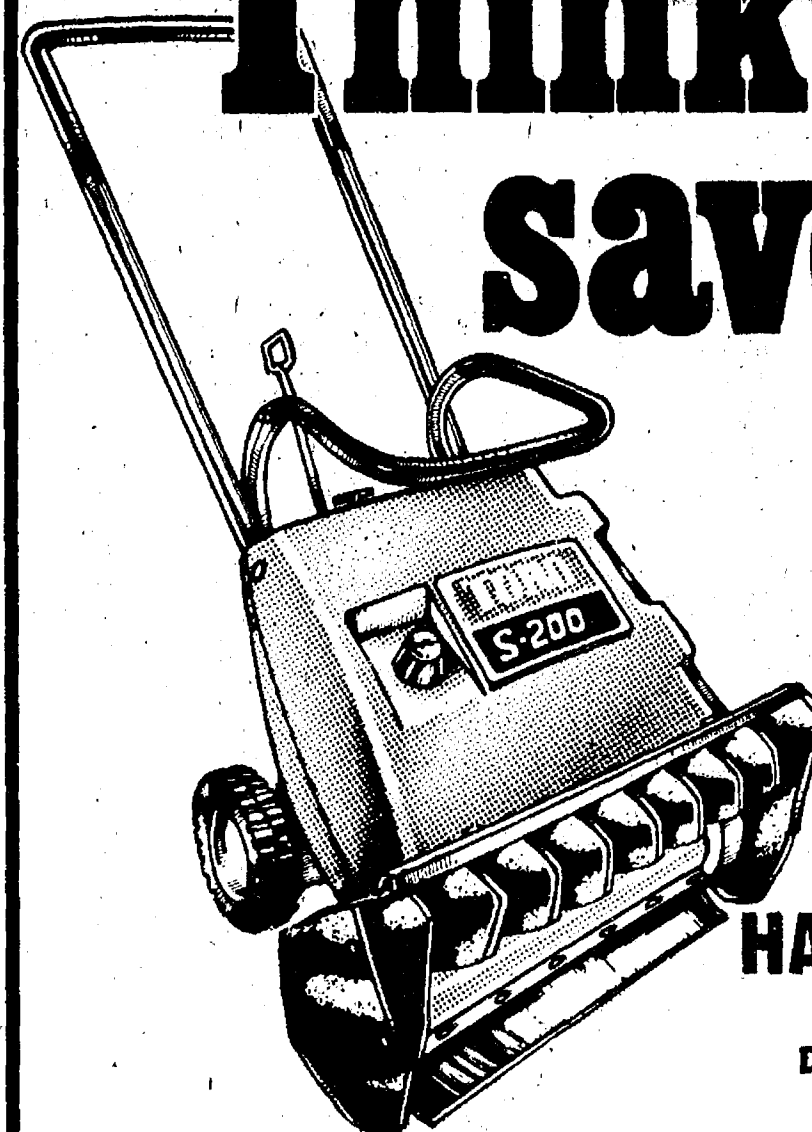


**DUTCH COUNTRY
KITCHENS**

PHONE 428-7292

146 E. Main St., Manchester

Think snow, save \$30.*



We ran out of Toro® single-stage snowthrowers last year. But next season's shipment is in now. And \$20 down holds one for you. Pay the balance by Nov. 25 and save up to \$30* depending on the model you select. Think snow now.

HACKNEY HARDWARE

Toro Authorized Service Dealer
Dexter, Mich. - Ph. 426-4009

Haven't you done without a
Toro long enough?™

TORO

*Comparing promotional and reg. season mfr.'s sug. ret. price. Subj. to local retailer option.

Insure two lives with one policy...



Joint Life

Equal life insurance coverage for both of you... with one policy, one premium. Let us show you how.



Dave Rowe

Call us at 475-8065, or visit us at 107 1/2 South Main Street in Chelsea

**FARM BUREAU
INSURANCE
GROUP**

Life Insurance, Fire Insurance, Farm Bureau Life Insurance, Community Service Insurance

CHELSEA OKTOBERFEST SATURDAY, OCT. 14

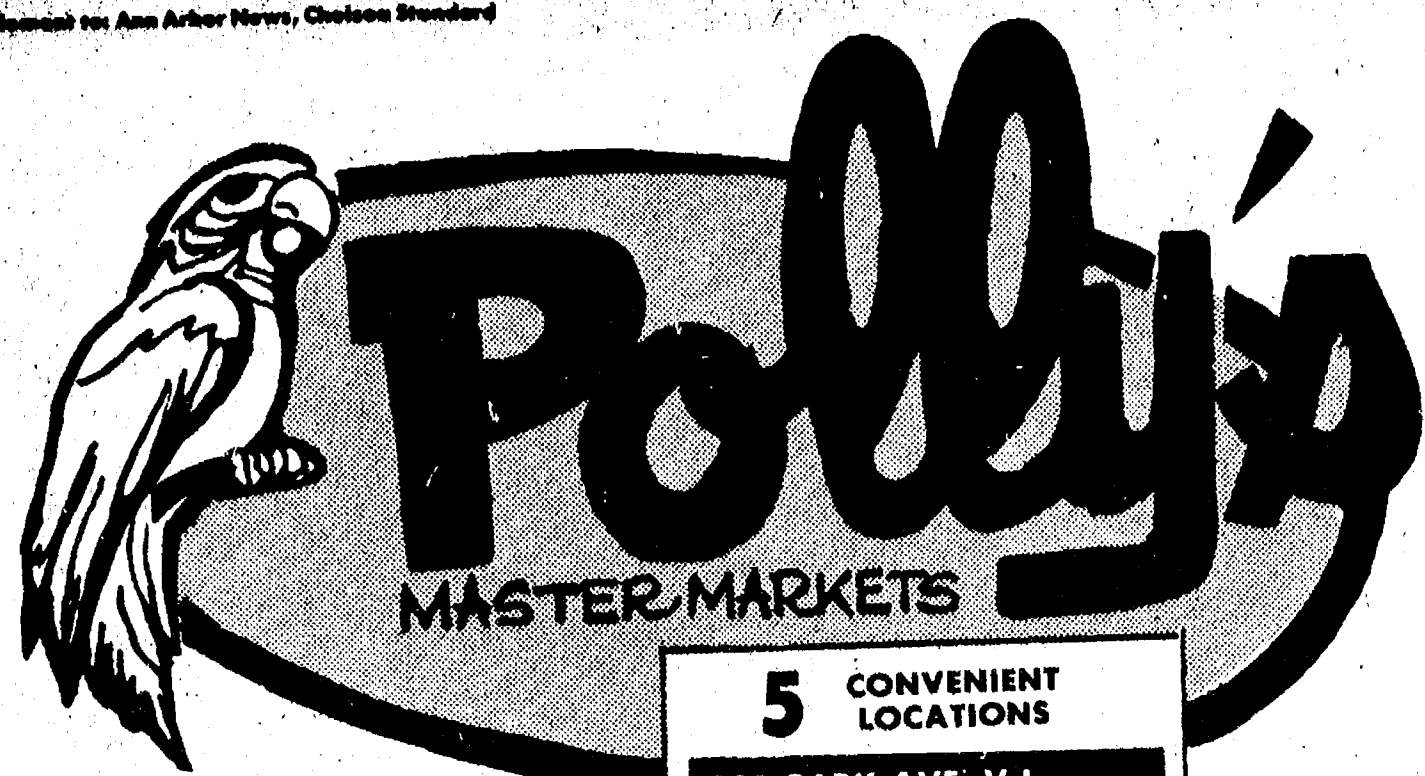
12 Noon to 1 a.m.

- ★ BEER TENT OPENS AT 12 p.m.
- ★ KNOCKWURST & BRATWURST
(Cooked Over Coals)
- ★ TWO GERMAN BANDS (12 p.m. to 1 a.m.)
- ★ EUCHRE TOURNAMENT at 6 p.m.
- ★ WINE & LIQUOR BAR

Enjoy Beautiful Fall Colors on Lake Shore.
at

AMERICAN LEGION POST 31
1700 Ridge Rd. (Cavanaugh Lake)

Sponsored By the American Legion



5 CONVENIENT LOCATIONS
201 PARK AVE., V.L.
1821 SPRING ARBOR RD.
960 NORTH WEST AVE.
1809 EAST MICHIGAN
1101 M-52, CHELSEA



5 CONVENIENT LOCATIONS
201 PARK AVE., V.L.
1821 SPRING ARBOR RD.
960 NORTH WEST AVE.
1809 EAST MICHIGAN
1101 M-52 CHELSEA

get to know us...
WE CAN HELP YOU SAVE ON YOUR FOOD BILL!

Open Daily 8 to 10
Sunday 9 to 9

- ★ **QUALITY PRODUCE**
- ★ **QUALITY MEAT**
- ★ **COLD BEER, WINE,**
- ★ **LIQUOR**
- ★ **LOTTERY TICKETS**
- ★ **SIDES OF BEEF**
- ★ **FRUIT BASKETS**
- ★ **DRY CLEANING**
- ★ **PHOTO PROCESSING**
- ★ **VARIETY AT LOW PRICES**



5 CONVENIENT LOCATIONS
201 PARK AVE., V.L.
1821 SPRING ARBOR RD.
960 NORTH WEST AVE.
1809 EAST MICHIGAN
1101 M-52 CHELSEA



5 CONVENIENT LOCATIONS
201 PARK AVE., V.L.
1821 SPRING ARBOR RD.
960 NORTH WEST AVE.
1809 EAST MICHIGAN
1101 M-52 CHELSEA

HARVEST TIME

Polly's
MASTERMARKETS

5 CONVENIENT LOCATIONS
201 PARK AVE., V.L.
1821 SPRING ARBOR RD.
960 NORTH WEST AVE.
1809 EAST MICHIGAN
1101 M-52 CHELSEA



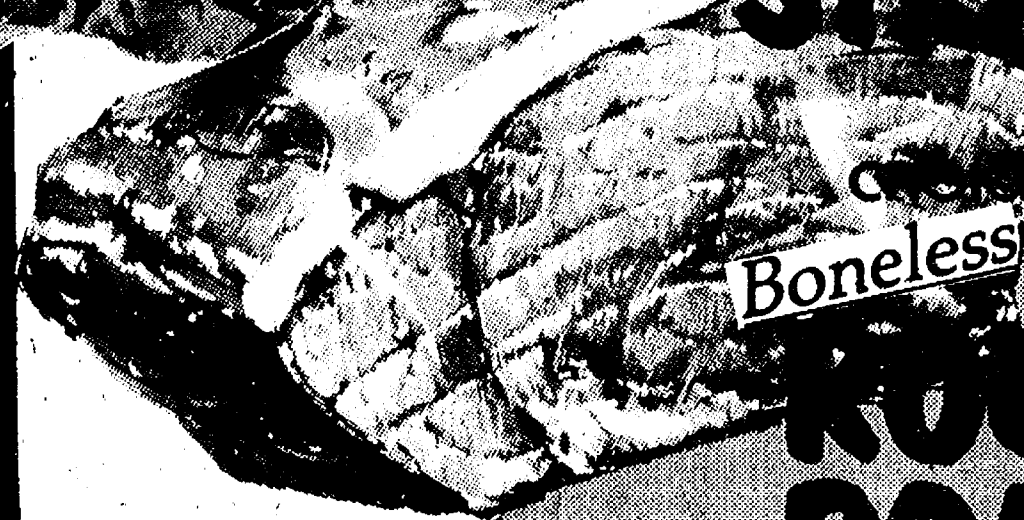
FRESH DAILY
GROUND BEEF CHUCK

\$1.29
LB.



CHOICE BEEF
Boneless **TOP ROUND STEAK**

\$1.59
LB.



CHOICE BEEF
Boneless **ROUND ROAST**

\$1.49
LB.

HYGRADE BONELESS

HAM

WATER ADDED

\$1.49
Lb.

CHOICE BEEF
NEW YORK

STRIP STEAK

\$2.49
Lb.

CHOICE BEEF

SIRLOIN TIP STEAK

\$1.89
Lb.

SAVE 60' WITH IN-STORE COUPON

HYGRADE

BEEF FRANKS

89¢

SAVE 50' WITH IN STORE COUPON

WEST VIRGINIA

BACON

\$1.39

SAVE 40' WITH IN-STORE COUPON

ECKRICH SLICED

BOLOGNA

\$1.49

SAVE 30' WITH IN-STORE COUPON

ECKRICH

SMOK-Y-LINKS

10 oz.

\$1.09

SAVE 30' LB.

PORK AND BEEF

MEAT LOAF MIX

\$1.29

SAVE 40' LB.

PORK and BEEF

KA-BOBS

\$1.59

SAVE 20' LB.

GROUND ROUND

STEAKETTES

\$1.89

SAVE 30'

DINNER BELL

LUNCH MEATS

\$1.39

SAVE 30'

FARMER PEET

RING BOLOGNA

\$1.19

SAVE 30'

FARMER PEET

LINK SAUSAGE

\$1.59

SAVE 60'

BILLMAR

TURKEY FRANKS

79¢

Fresh from the Sea!!
AVAILABLE WEDNESDAY THRU SATURDAY

Fillet of

OCEAN PERCH

\$1.99

Fillet of

SCROD

\$1.99

Fillet of

COD

\$1.99

Fresh

OYSTERS

\$1.89

8 oz.





CRISP
HEAD
LETTUCE
3 for \$1



10 LB.
BAG

SAVE 32'
U.S. NO. 1
MICHIGAN
POTATOES

67¢



Large Assortment
FLORAL
HANGING BASKETS
\$4.99
6 Inch Pot

FRESH GREEN ONIONS 5 for \$1.00
FRESH BEAN SPROUTS 8 oz. 49¢
FRESH SALAD SLAW lb. 49¢
TASTY CARAMEL APPLES 3 Pak 69¢

Polly's
MASTERMARKETS

5 CONVENIENT
LOCATIONS
201 PARK AVE., V.L.
1821 SPRING ARBOR RD.
960 NORTH WEST AVE.
1809 EAST MICHIGAN
1101 M-52 CHELSEA

SAVE 26' WITH IN-STORE COUPON
NESTLE HOT

COCOA MIX

12 oz.

99¢

SAVE 14' WITH IN-STORE COUPON
SUPER MOTTS

PRUNE JUICE

40 oz.

79¢

SAVE 36' WITH IN-STORE COUPON
MR. SPUD IDAHO

MASHED POTATOES

32 oz.

\$1.19

SAVE 24' WITH IN-STORE COUPON
RAGU

SPAGHETTI SAUCE

32 oz.

\$1.09

Renzit Air Fresheners

3-6 oz. for **\$1.00**

Save 59' with in store coupon

DEAN CHIP DIPS 3 8 oz. \$1.00
PINK LADY DISH DETERGENT 32 oz. 39¢
SALADA INSTANT FUDGE 10 oz. \$1.19
WELCHES GRAPE JELLY 32 oz. 89¢
CHEF-BOY-AR-DEE SPAGHETTI DINNER 19 oz. 89¢

WIN SCHULER BAR SCHEEZE 8 oz. 89¢
WIN SCHULER BAR SCHIPS 5 oz. 59¢
HOLSUM COUNTRY STYLE BREAD 2 1 lb. 99¢
HOLSUM BROWN n' SERVES Doz. 59¢
ALPINE BAKERY DUTCH APPLE PIE 22 oz. 99¢

RICHES WHIPPED TOPPING 9 oz. 39¢
RICHES COFFEE RICH 4 16 oz. \$1.00
HARRISS LEMON CRUNCH PIE 8 in. 79¢
OKRAYS HASH BROWN POTATOES 24 oz. 53¢
BORDEN SUNDAE CONES 6 pk 69¢

BIG SAVINGS ON QUALITY PRODUCTS!!

SAVE 41' WITH IN-STORE COUPON

SCOT LAD

MARGARINE

3 1 lb. Qtrs. **\$1.00**

SAVE 41' WITH IN-STORE COUPON

SCOT LAD YELLOW CLING

PEACHES

Sliced or Halves

3 16 oz. for **\$1.00**

SAVE 34' WITH IN-STORE COUPON

SCOT LAD INSTANT

ORANGE DRINK

99¢
27 oz.

SCOT LAD

PORK n' BEANS, CHILI BEANS, GREAT NORTHERN or RED BEANS

4 16 oz. cans **\$1.00**

SCOT LAD VEGETABLES 4 16 oz. cans \$1.00
SCOT FARM BISCUITS 6 8 oz. for \$1.00
SCOT LAD SALAD OIL 24 oz. 79¢
SCOT ORCHARDS HONEY 12 oz. 79¢
SCOT KITCHEN BROWN SUGAR 32 oz. 69¢
SCOT KITCHEN POWDER SUGAR 32 oz. 69¢
QUEEN of SCOT FRUIT COCKTAIL 2 16 oz. \$1.00
SCOT LAD BUTTER BEANS 3 15 oz. \$1.00
SCOT LAD GARBANZO BEANS 3 15 oz. \$1.00
SCOT LAD RED KIDNEY BEANS 3 15 oz. \$1.00
SCOT LAD TOMATO SAUCE 5 8 oz. \$1.00
SCOT LAD PEANUT BUTTER 40 oz. \$1.59
SCOT LAD TOMATOES 3 16 oz. \$1.00
SCOT LAD TOMATO JUICE 46 oz. 58¢
SCOT LAD APPLE SAUCE 50 oz. 99¢
SCOT LAD TEA BAGS 100 ct. \$1.49
SCOT LAD PIECES & STEMS MUSHROOMS 4 oz. 39¢
SCOT LAD FRUIT DRINKS 2 46 oz. \$1.00

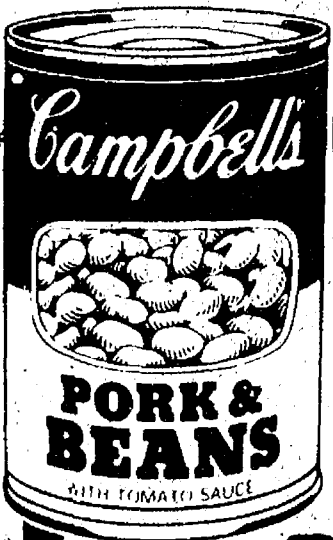


HARVEST TIME

Polly's
MASTERMARKETS

5 CONVENIENT LOCATIONS

201 PARK AVE., V.L.
1821 SPRING ARBOR RD.
960 NORTH WEST AVE.
1809 EAST MICHIGAN
1101 M-52 CHELSEA



SAVE 20¢
WITH IN-STORE COUPON
CAMPBELLS

**PORK &
BEANS**

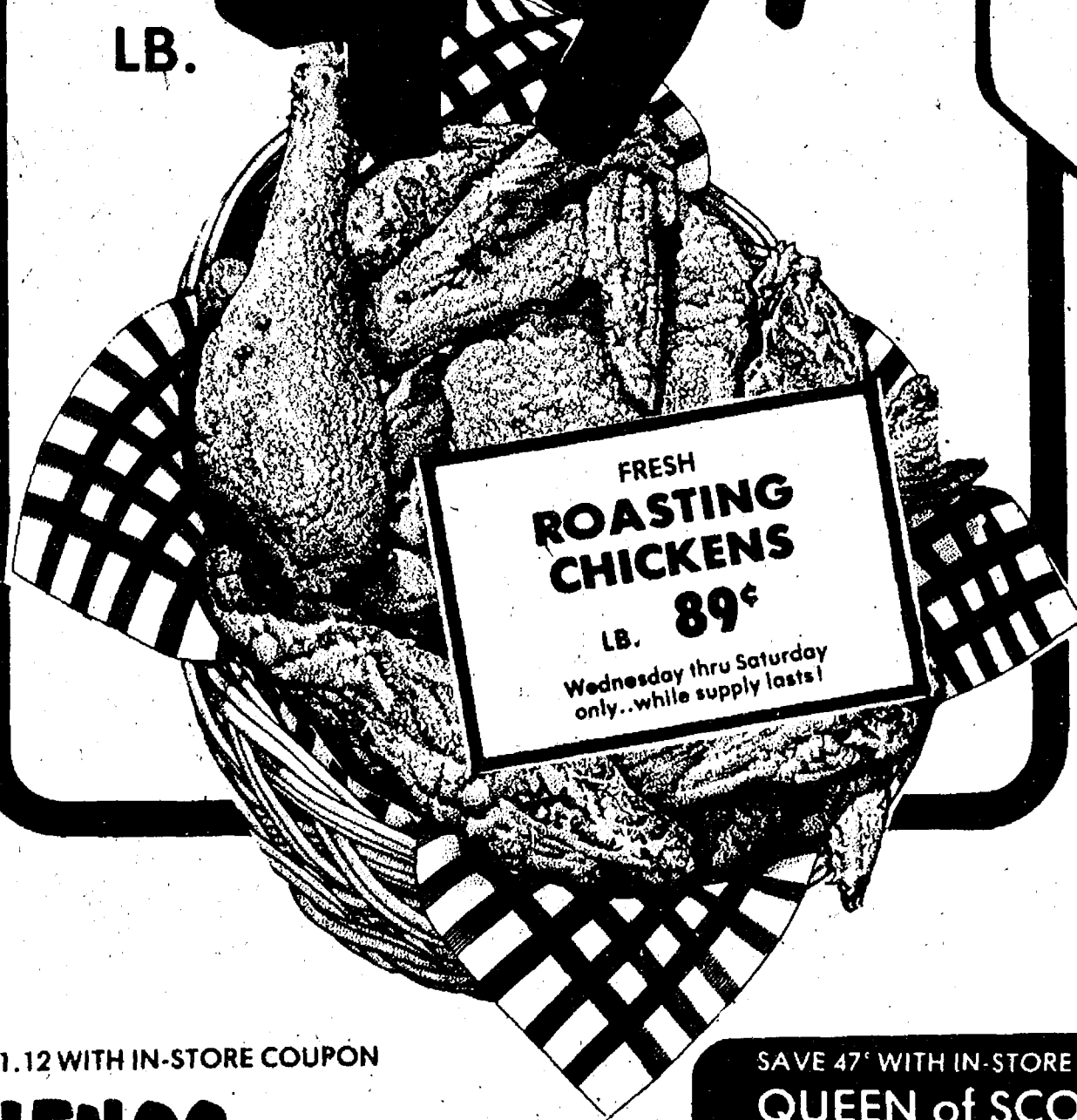
4 16-OZ. CANS for **\$1**

GOVERNMENT INSPECTED

WHOLE

FRYERS

LB. **49¢**



FRESH
ROASTING
CHICKENS

LB. **89¢**

Wednesday thru Saturday
only...while supply lasts!



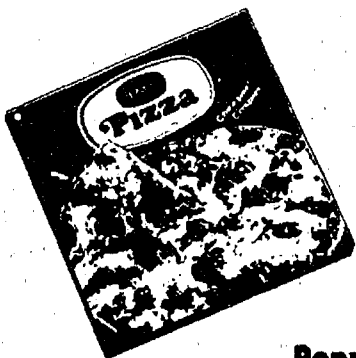
SAVE 48¢
BORDEN

**2% LO-FAT
MILK**

\$1.29

PLASTIC
GALLON

BUY 2—SAVE \$1.12 WITH IN-STORE COUPON



**JENOS
PIZZA**

Pepperoni, Sausage, Cheese or Barbecue

13-OZ. **69¢**



Golden
Vanilla

HALF-
GALLON

BUY 2—SAVE \$1.40 WITH IN-STORE COUPON

BORDEN ELSIE

**ICE
CREAM**

99¢

SAVE 47¢ WITH IN-STORE COUPON

QUEEN of SCOT

**TOMATO
SOUP**

10-OZ.
CANS

7/\$1

SAVE 50¢ WITH IN-STORE COUPON

GLAD

**LAWN
BAGS**

10-CT.

\$1.39

SAVE 57¢ WITH IN-STORE COUPON

MARCAL SOF-PAC

**JUMBO
TOWELS**

for

2/89¢

SAVE 18¢
KEEBLER

**ZESTA
SALTINES**

16-OZ.

59¢

